

C10449_Tina-O-Plus-W for Osram Platinum / Dragon Plus LEDs

OSRAM
www.osram.com

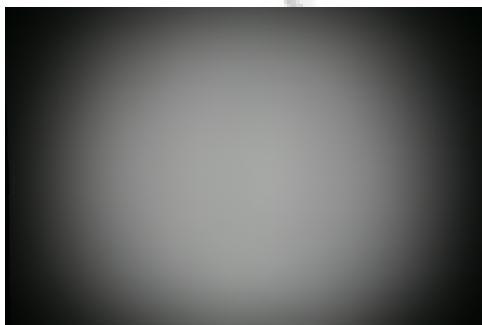


- Lens material optical grade PMMA with high UV and temperature resistance (105°C/220°F).
- High optical efficiency, >80%
- Very uniform and visually pleasing beam shape
- Designed especially for indoor applications
- Attaching of the lens holder directly on the Platinum / Dragon Plus package by snap fits. For detailed mounting information, please look at the drawing and the photographs
- Very small and compact dimensions: Diameter 10.5 mm, height 7 mm

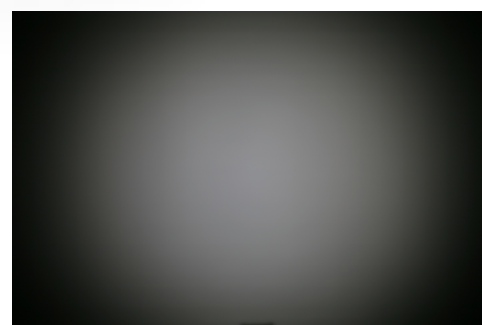
LENS TYPES

NAME	ORDERING CODE	FWHM Angle with Golden Dragon+
TINA-O-Plus Wide	C10449_Tina-O-Plus-W	±36°
		FWHM Angle with Platinum Dragon
		±37°

MEASUREMENT DATA & PHOTOGRAPHS



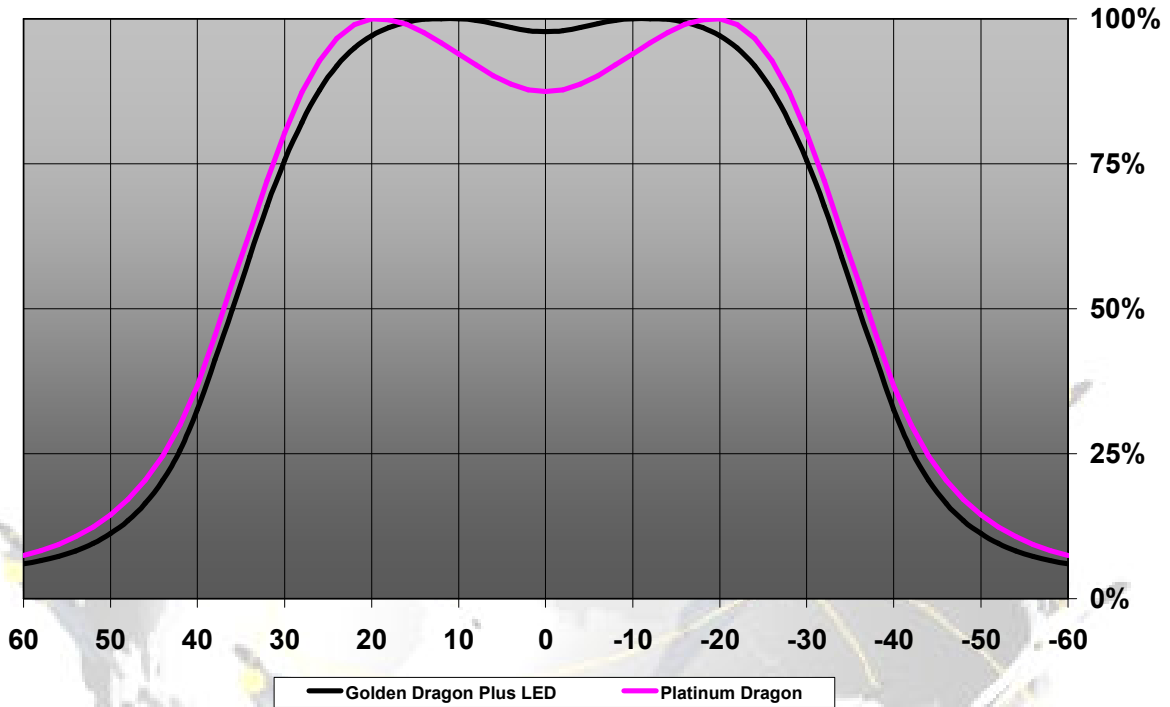
C10449_Tina-O-Plus-W (Golden Dragon plus)



C10449_Tina-O-Plus-W (Platinum Dragon)

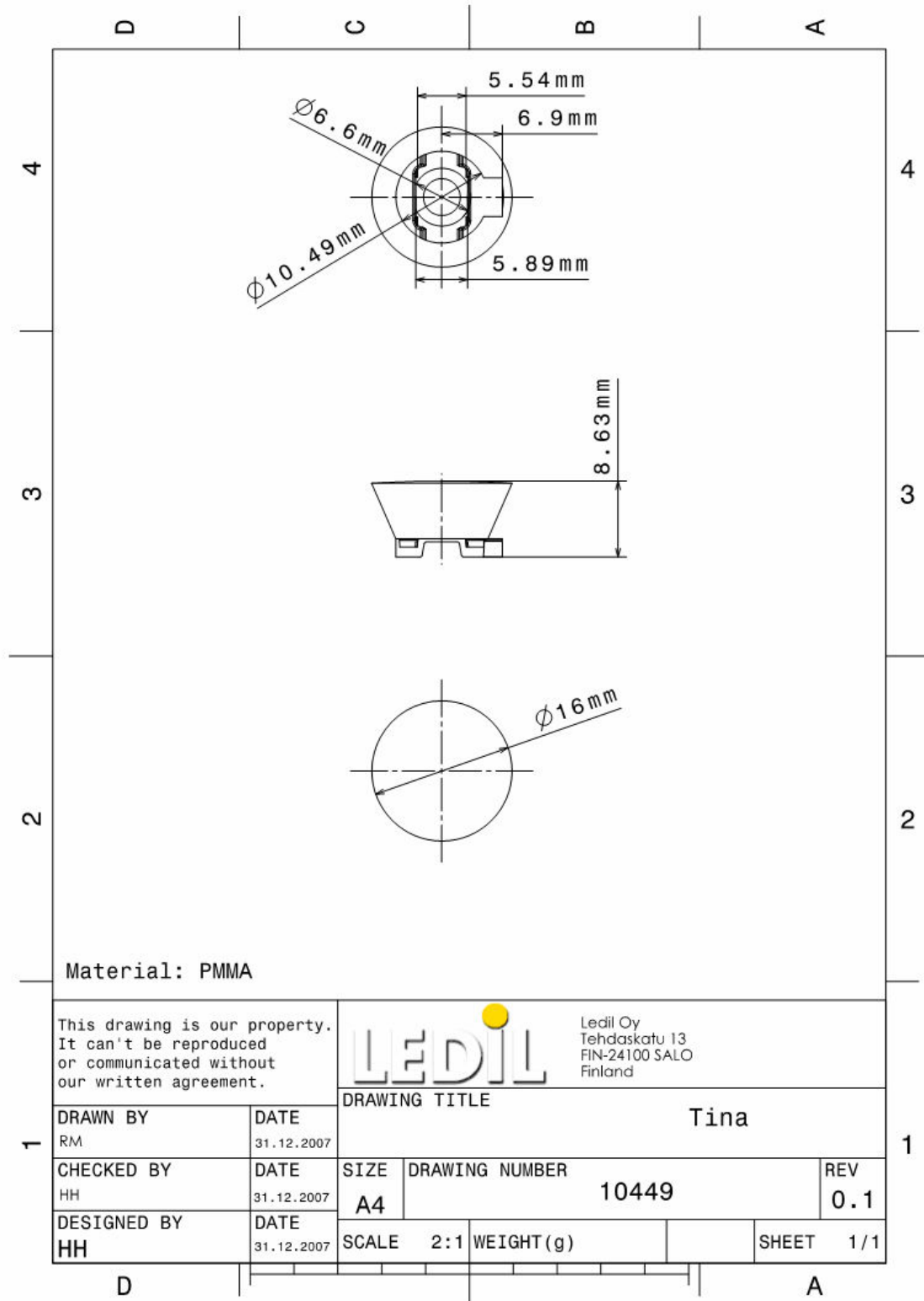
© Ledil Oy – PRELIMINARY - Subject to change without prior notice

Relative Intensity of C10449_Tina-O-Plus-W



© Ledil Oy – PRELIMINARY - Subject to change without prior notice

DIMENSIONS & PCB LAYOUT



© Ledil Oy – PRELIMINARY - Subject to change without prior notice