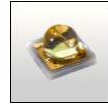


Tina-Pin-OSL lenses for Osram Oslon SSL LEDs



- Designed & optimized for Osram's Oslon SSL series of LEDs
- Lens material optical grade PC with high UV and temperature resistance (130°C/220°F). Allows use of high current and temperature conditions
- Integrated holder with small position pins. See drawing below for more details
- Best available optical efficiency, over 90%, with an extremely good cutoff of light
- Fastening to heat sink with a PU foam adhesive tape of automotive grade (included)
- Compact dimensions 16.1 x 10.1 mm.

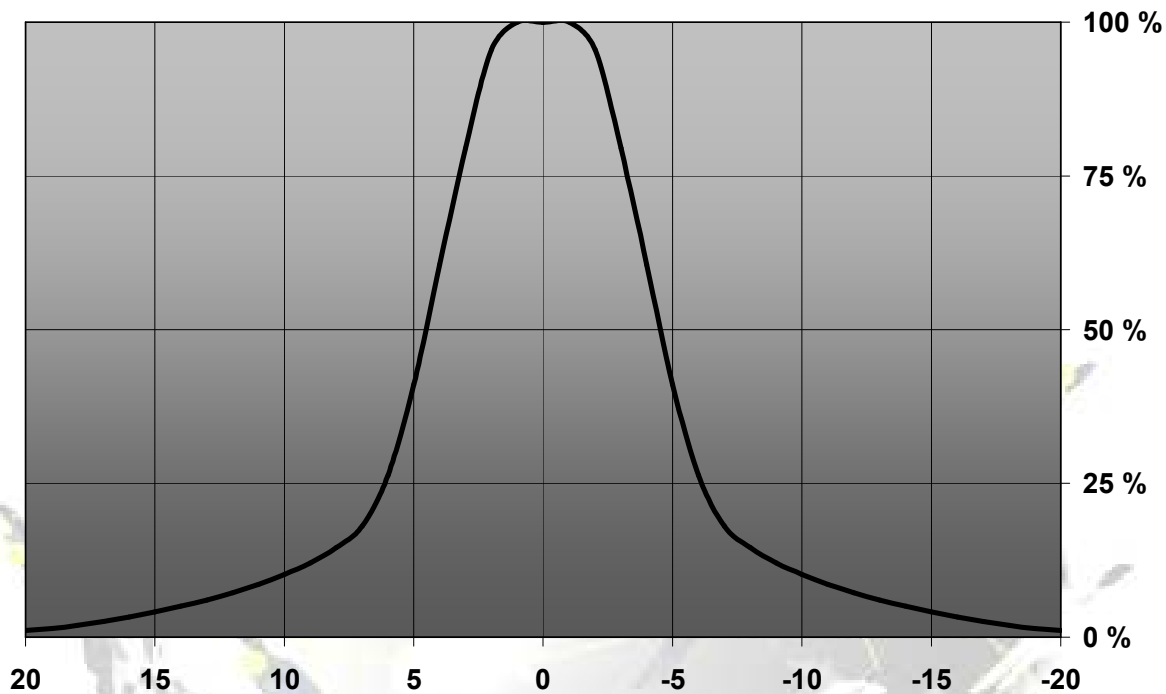
LENS TYPES

NAME	ORDERING CODE	FWHM Angle
Tina-Pin-OSL Real Spot	FA11208_Tina-RS-OSL	±4.5°
Tina-Pin-OSL Diffuser	FA11205_Tina-D-OSL	±6°
Tina-Pin-OSL Medium	FA11206_Tina-M-OSL	±14°
Tina-Pin-OSL Oval	FA11204_Tina-O-OSL	±6° x ±18°
Tina-Pin-OSL Wide	FA11207_Tina-W-OSL	±19°

© Ledil Oy – PRELIMINARY - Subject to change without prior notice

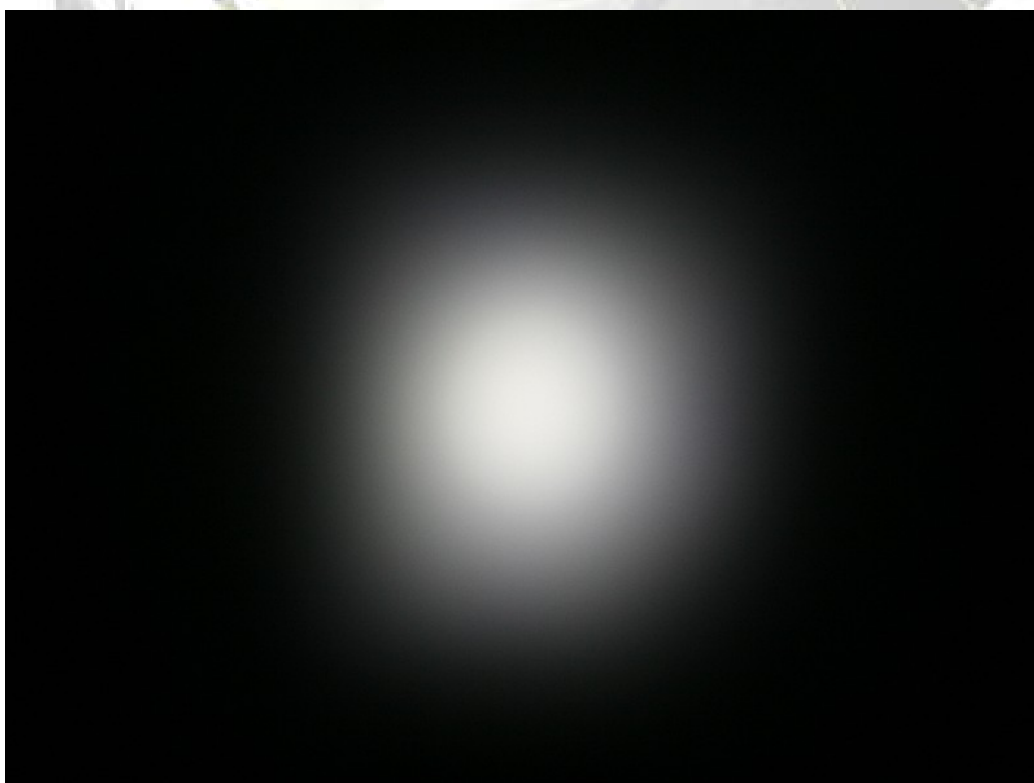
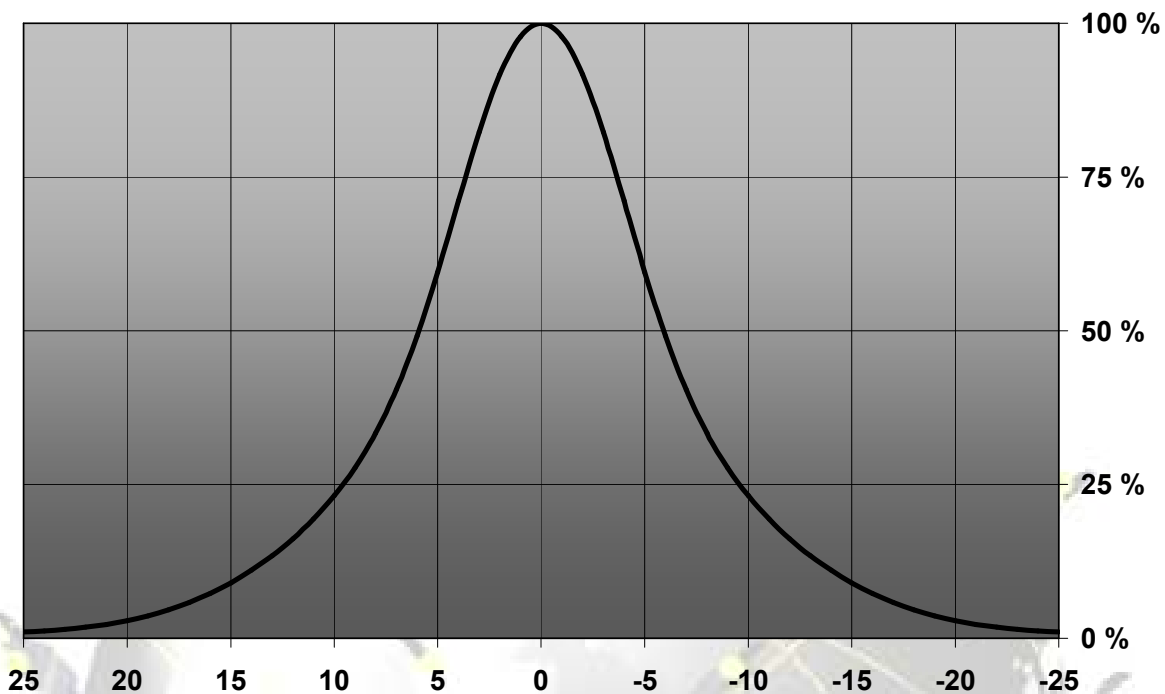
MEASUREMENTS

Relative Intensity of FA11208_Tina-RS-OSL



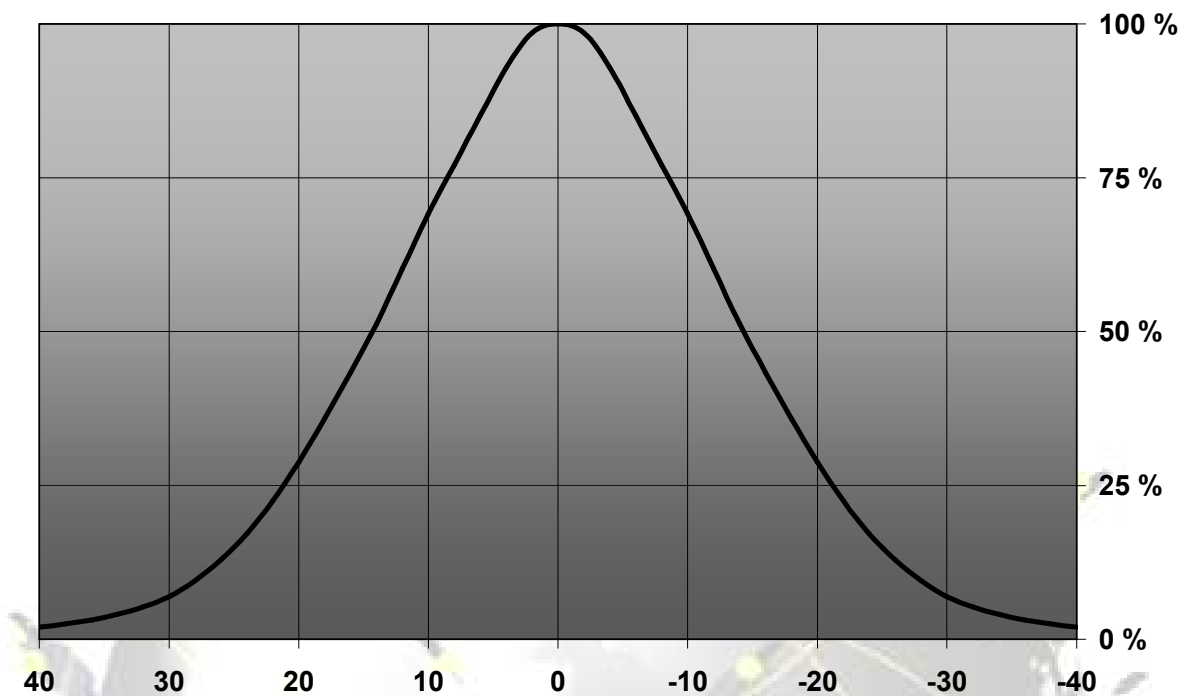
© Ledil Oy – PRELIMINARY - Subject to change without prior notice

Relative Intensity of FA11205_Tina-D-OSL



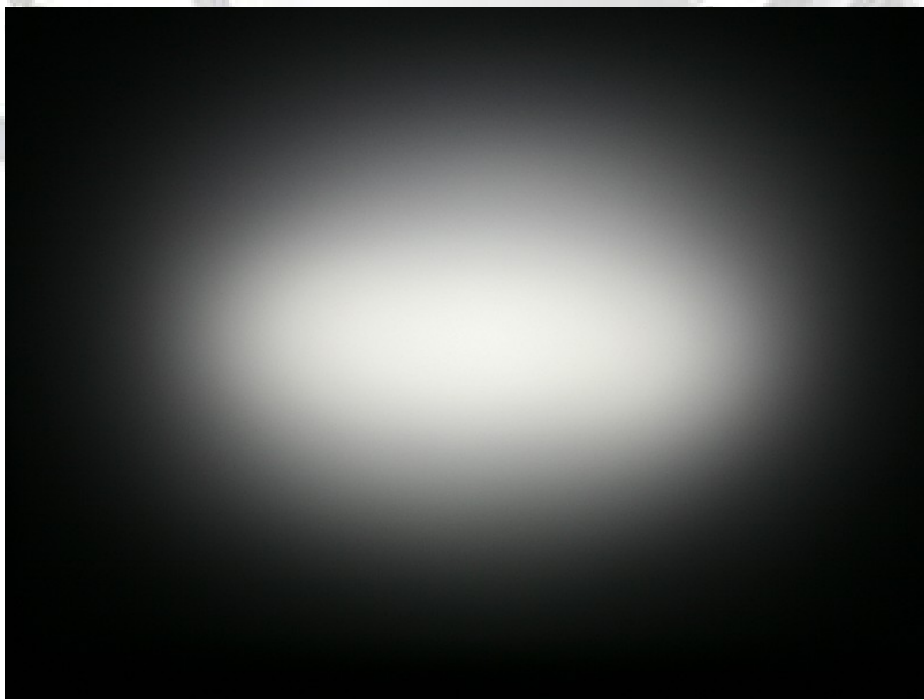
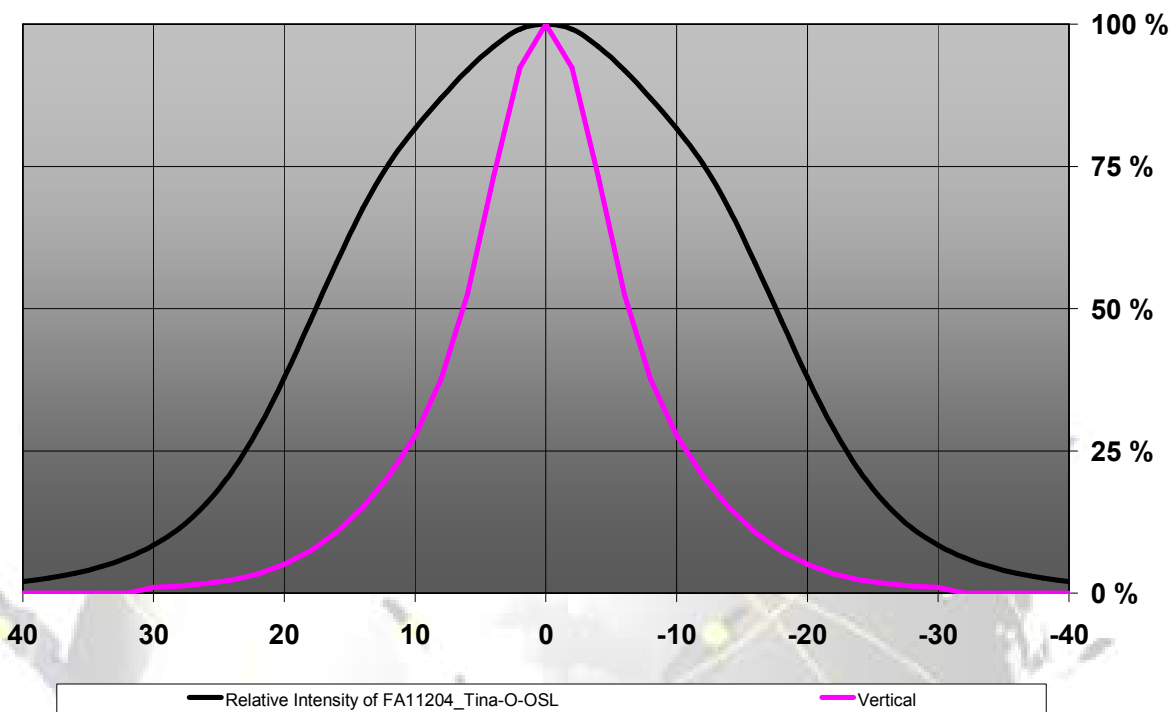
© Ledil Oy – PRELIMINARY - Subject to change without prior notice

Relative Intensity of FA11206_Tina-M-OSL



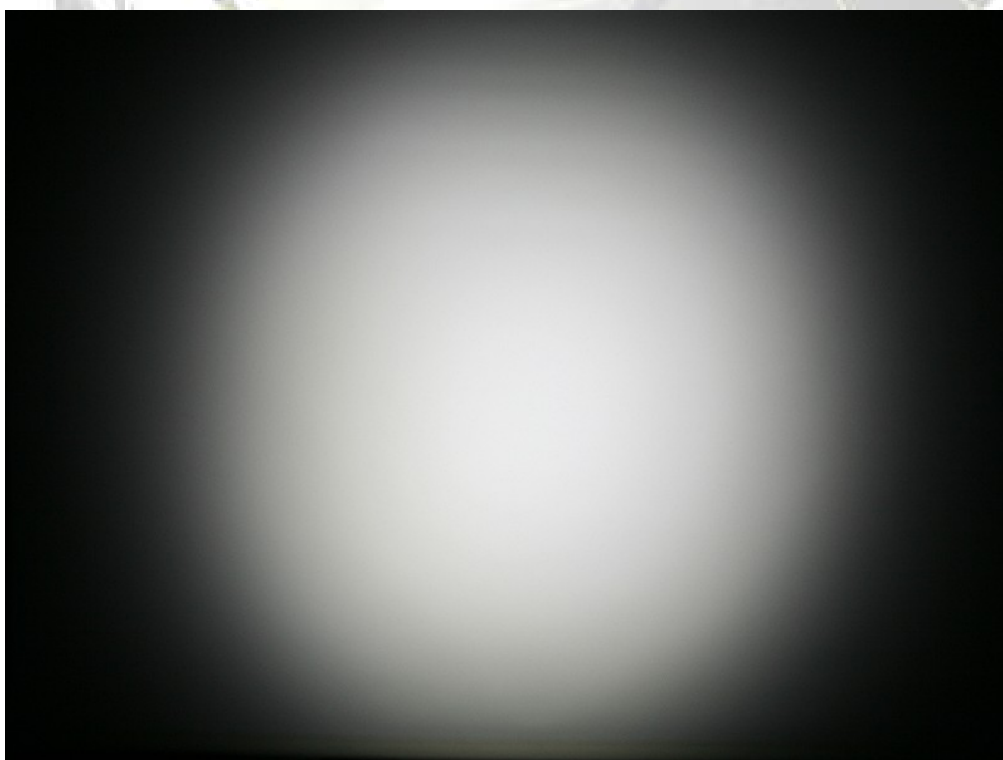
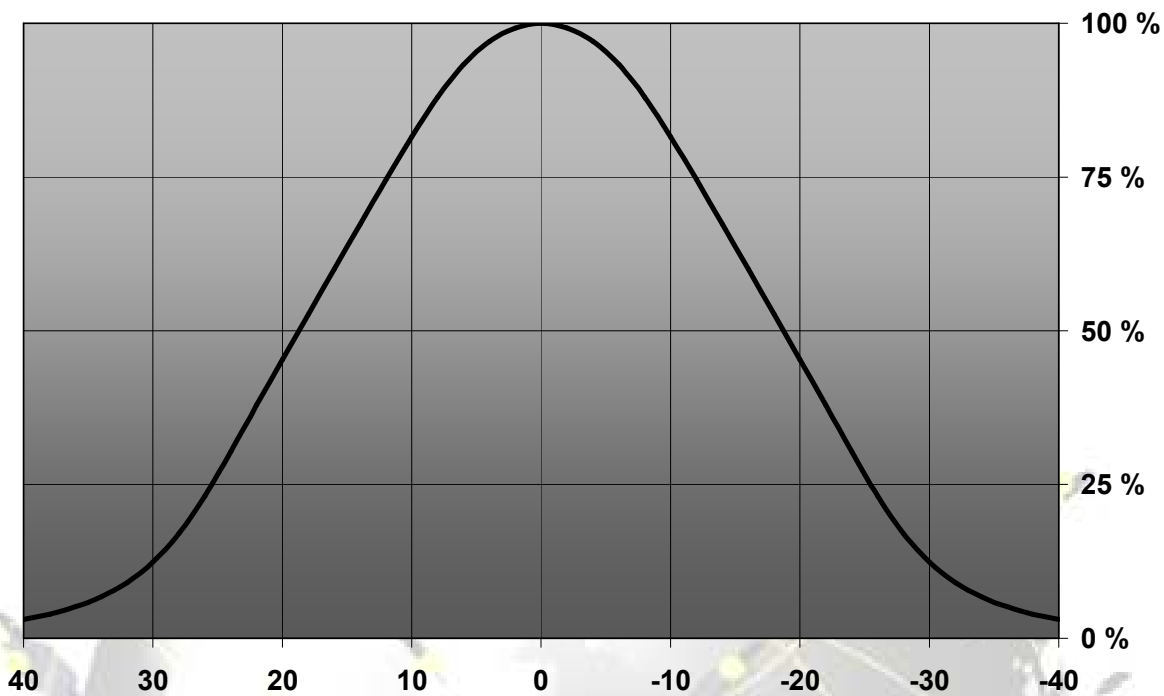
© Ledil Oy – PRELIMINARY - Subject to change without prior notice

Relative Intensity of FA11204_Tina-O-OSL



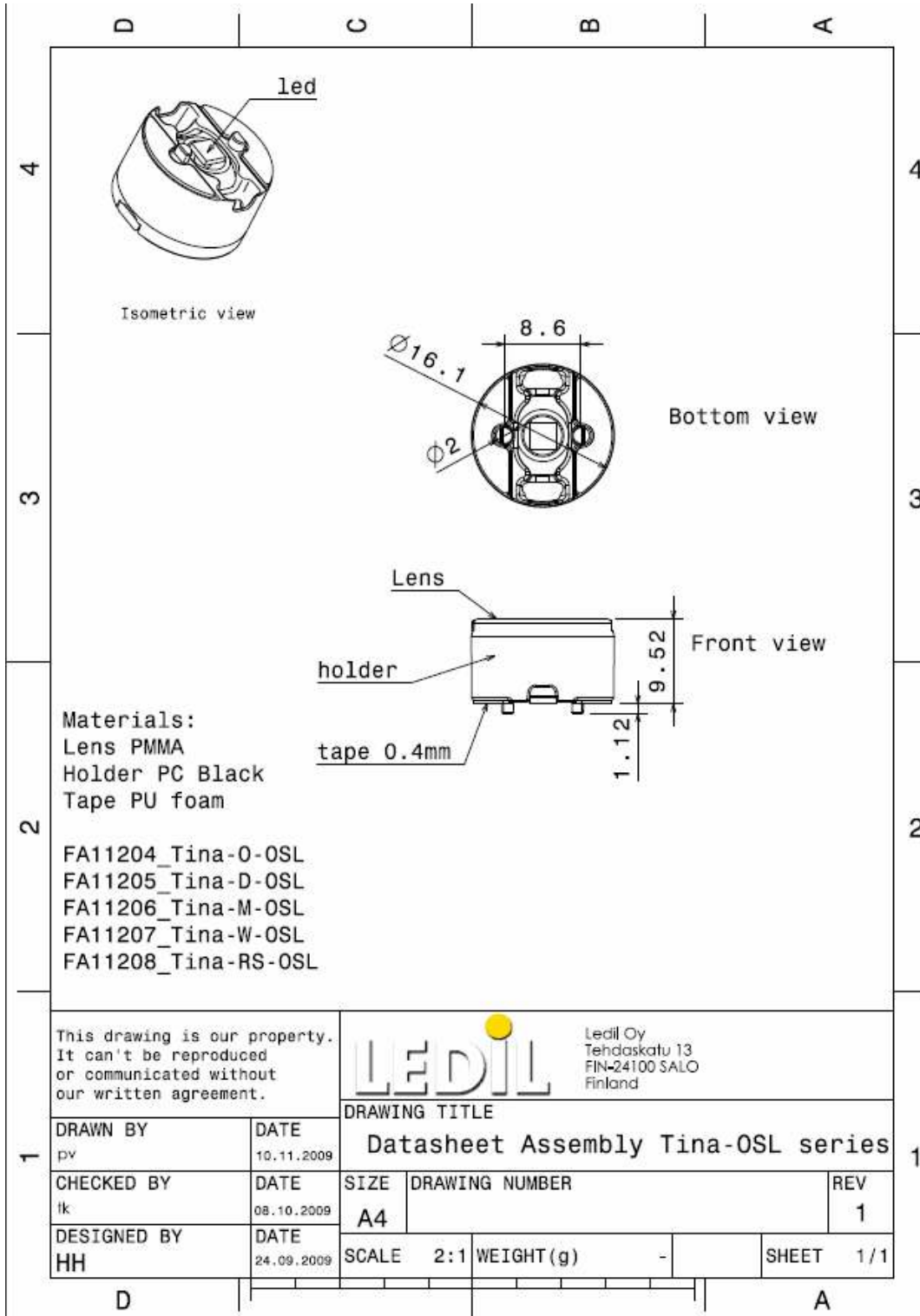
© Ledil Oy – PRELIMINARY - Subject to change without prior notice

Relative Intensity of FA11207_Tina-W-OSL



© Ledil Oy – PRELIMINARY - Subject to change without prior notice

DRAWINGS



© Ledil Oy – PRELIMINARY - Subject to change without prior notice