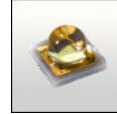


Lisa2-Clip16-OSL miniature lens for Osram Oslon SSL series of LEDs

OSRAM
www.osram.com



- Lens material optical grade PMMA with high UV and temperature resistance (105°C/220°F). Lens holder molded of high quality black PC.
- High optical efficiency, up to 90%.
- Integrated holder with small snap clips. See drawing below for more details. Fastening of holden the lens to PCB.
- Very small and compact dimensions: Diameter 9.9 mm, height 6.8 mm.

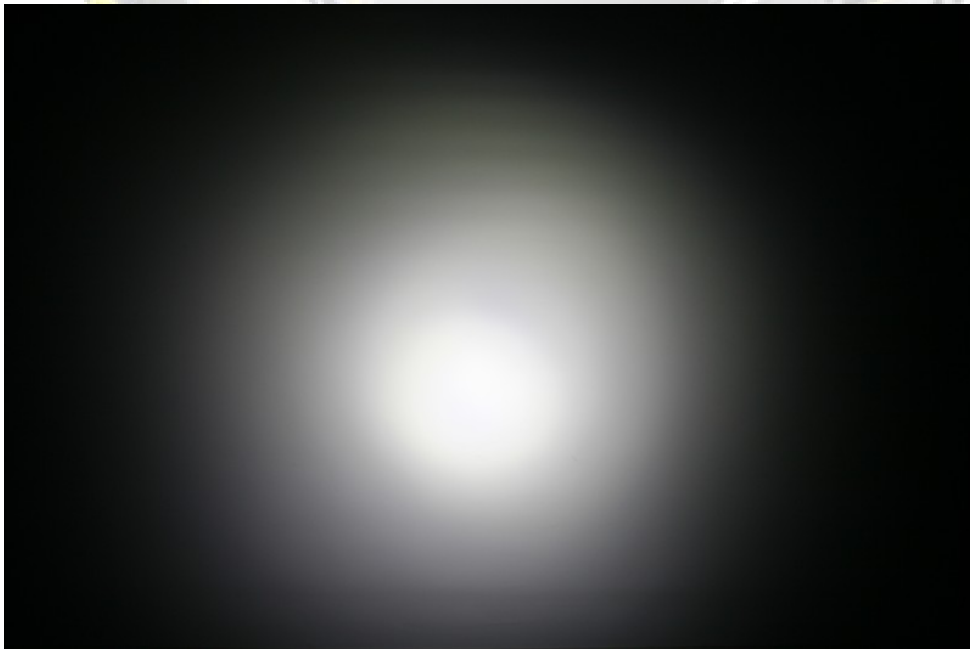
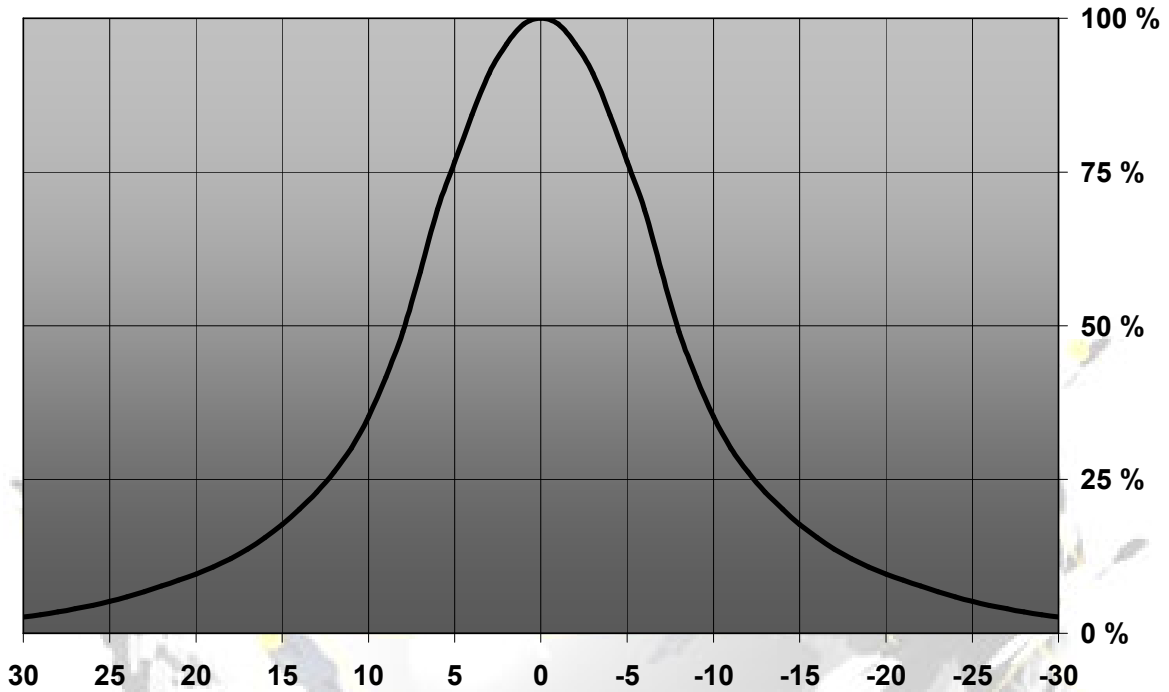
LENS TYPES

NAME	ORDERING CODE	FWHM Angle
Lisa2-Clip16 Real Spot	FA11084_Lisa2-RS-clip16-OSL	±8°
Lisa2-Clip16 Medium	FA11081_Lisa2-M-clip16-OSL	±12°
Lisa2-Clip16 Oval	FA11120_Lisa2-O-clip16-OSL	~±5° x ~16°
Lisa2-Clip16 Wide	FA11082_Lisa2-W-clip16-OSL	±16°

~ results are based on simulation value.

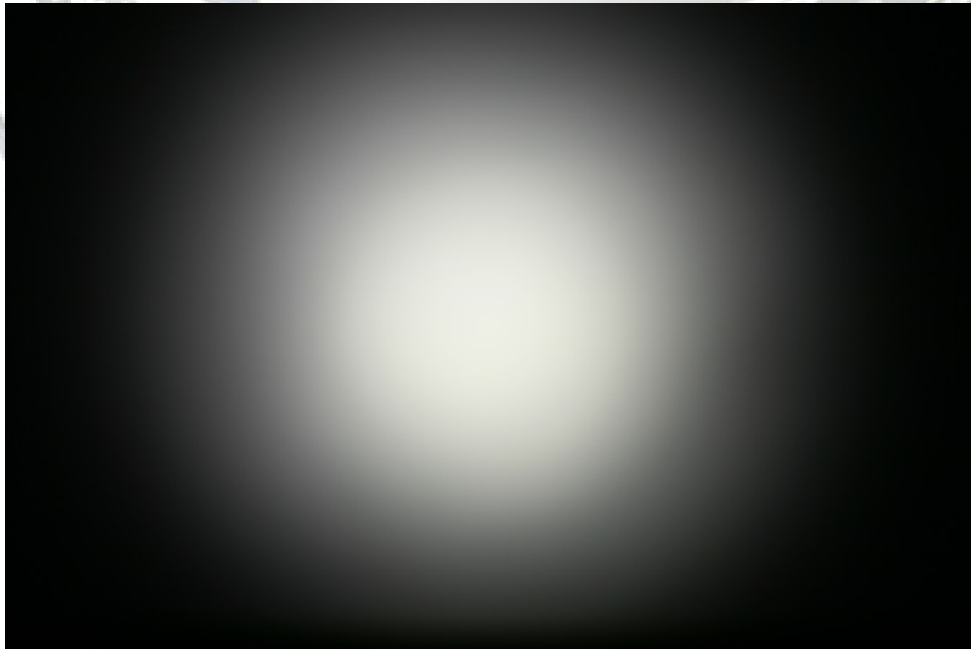
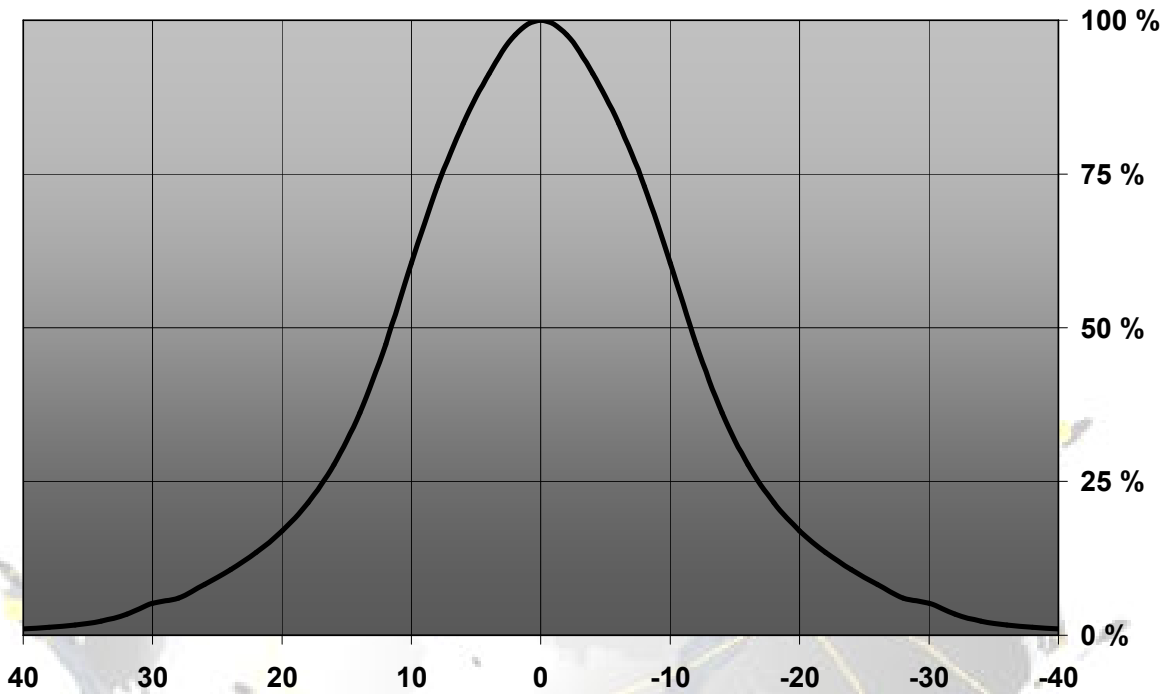
MEASUREMENT DATA

Relative Intensity of FA11047_Lisa2-RS-Pin-OSL



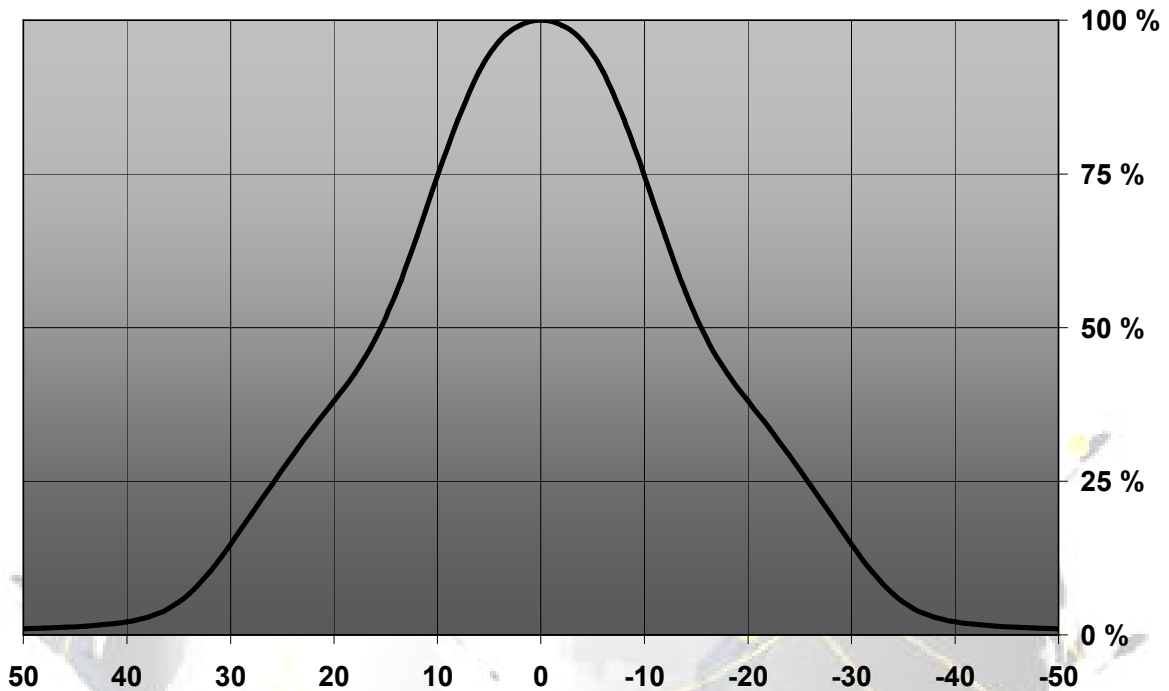
© Ledil Oy – PRELIMINARY - Subject to change without prior notice

Relative Intensity of FA11001_Lisa2-M-Pin-OSL



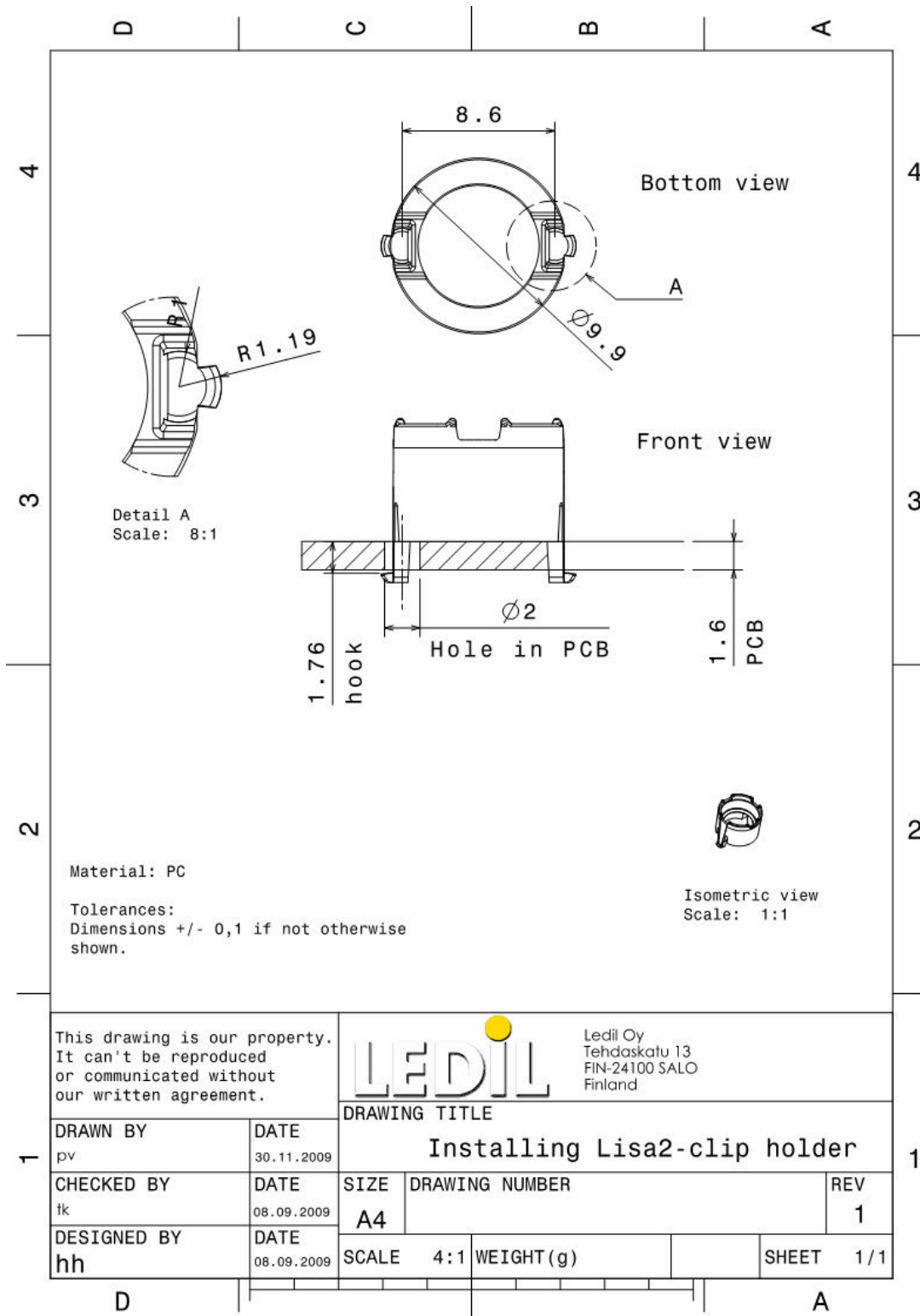
© Ledil Oy – PRELIMINARY - Subject to change without prior notice

Relative Intensity of FA11002_Lisa2-W-Pin-OSL



© Ledil Oy – PRELIMINARY - Subject to change without prior notice

DRAWINGS



© Ledil Oy – PRELIMINARY - Subject to change without prior notice