

## Fully sealable Emily lenses for Osram Oslon SSL LEDs



**OSRAM**  
www.osram.com



- Specially designed for Osram Oslon SSL series of LEDs.
- Lens material optical grade PMMA with high UV and temperature resistance (105°C/220°F)
- High optical efficiency, up to 90%
- No lens holder. Lens has small position pins, fastening to heat sink with a PU foam adhesive tape of automotive grade. For mounting instruction, please see datasheet at the bottom page.
- Lens foot can be potted with resin without losses in optical efficiency (**fully sealed construction** of luminaire possible)
- Diameter 26 mm, height 15mm

## LENS TYPES

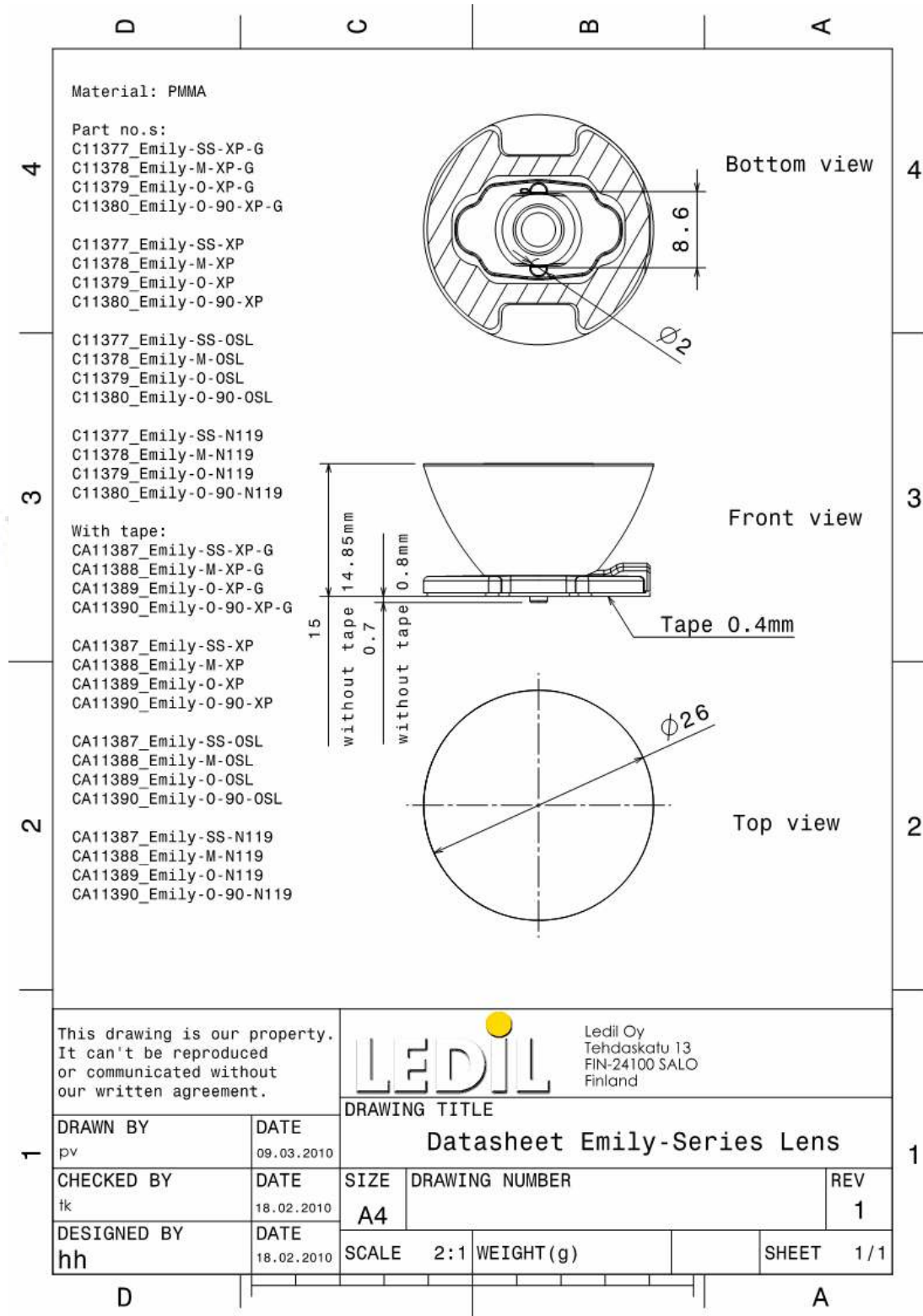
NAME	ORDERING CODE	FWHM Angle
Emily Smooth Spot	CA11387_Emily-SS-OSL	Coming soon
Emily Medium	CA11388_Emily-M-OSL	Coming soon
Emily Oval	CA11389_Emily-O-OSL	Coming soon
Emily Oval 90°	CA11390_Emily-O-90-OSL	Coming soon

## MEASUREMENTS

Coming soon

© Ledil Oy – Subject to change without prior notice

## DRAWINGS



This drawing is our property. It can't be reproduced or communicated without our written agreement.



Ledil Oy  
 Tehdaskatu 13  
 FIN-24100 SALO  
 Finland

**DRAWING TITLE**

**Datasheet Emily-Series Lens**

<b>DRAWN BY</b> pv	<b>DATE</b> 09.03.2010
<b>CHECKED BY</b> tk	<b>DATE</b> 18.02.2010
<b>DESIGNED BY</b> hh	<b>DATE</b> 18.02.2010

<b>SIZE</b> A4	<b>DRAWING NUMBER</b>	<b>REV</b> 1
<b>SCALE</b> 2:1	<b>WEIGHT (g)</b>	<b>SHEET</b> 1/1