

Twiddle-N83 lenses for Nichia 183 / 083 LEDs



- Specially designed for Nichia 183 and NS6x083 series of LEDs
- Special care taken to make a uniform white or warm white illumination.
- Lens material optical grade PMMA
- Integrated holder. Fastening to heat sink with a PU foam adhesive tape of automotive grade
- Compact dimensions 21.6 x 14.4 mm. Square form enables easy build of matrix without any gaps between lenses.
- New PATENT PENDING "Omni-directional" technique, allows freely swivel the lens and its light distribution in any angle within +/- 15 degrees from the nominal position

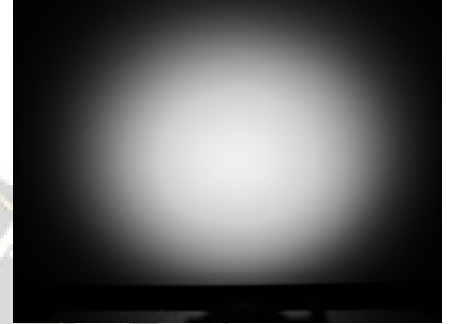
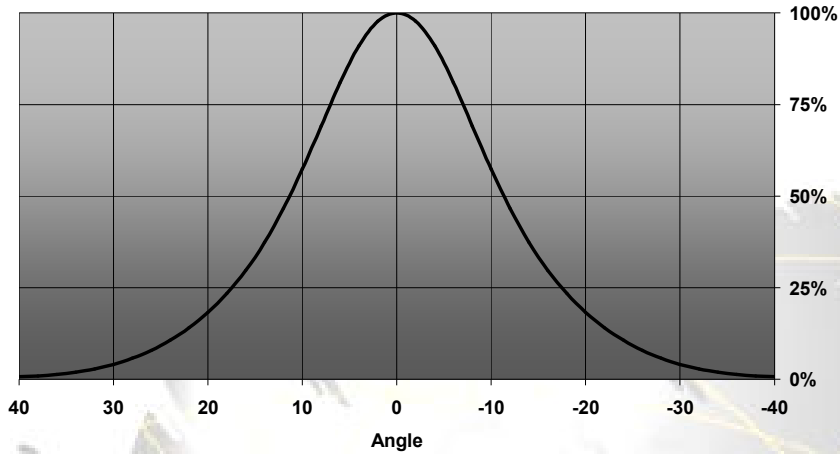
LENS TYPES

NAME	ORDERING CODE	FWHM Angle
Twiddle Diffuser	FA10734_Twiddle-N83-D	±11.5°
Twiddle Medium	FA10736_Twiddle-N83-M	±14°

MEASUREMENTS (using warm white LED)

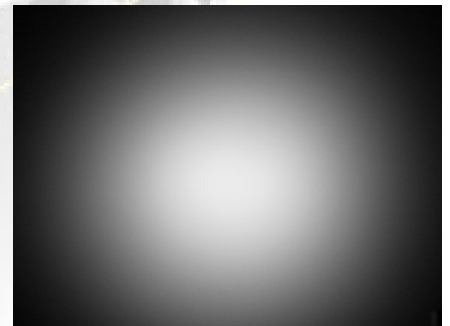
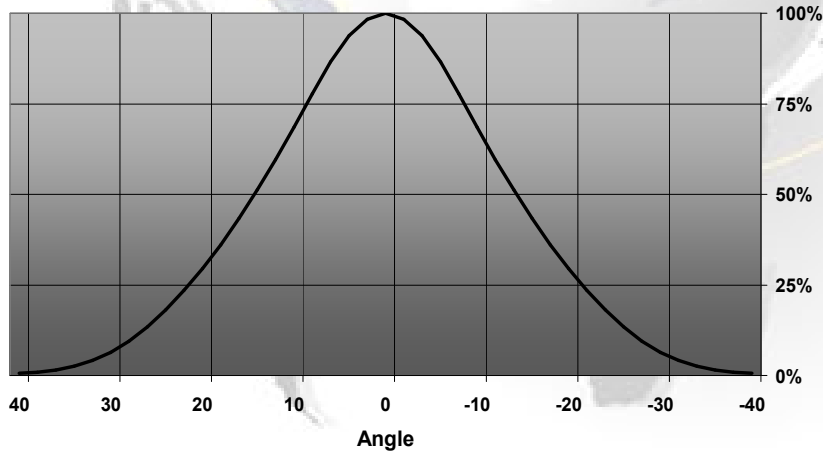
Twiddle-N83-D

Relative Intensity of FA10734_TWIDDLE-D

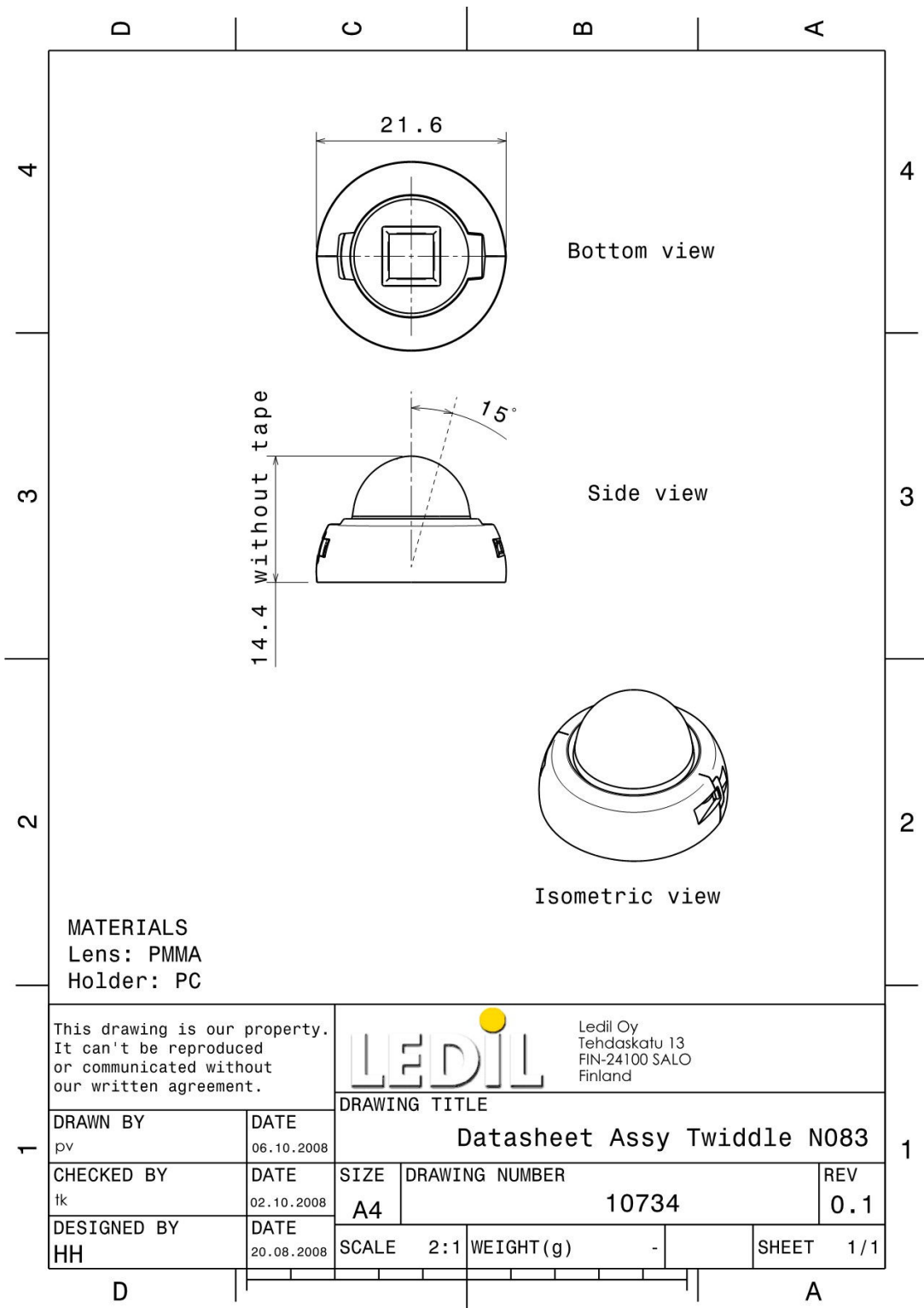


Twiddle-N83-M

Relative Intensity of FA10736_Twiddle-N083-M



DIMENSIONS



© Ledil Oy – PRELIMINARY - Subject to change without prior notice