

## STRADA-DN-N83 LENSES FOR NICHIA 183 / 083 LEDs



- Specially designed for Nichia 183 / 083 series of LEDs.
- New extremely wide street light design with very wide horizontal and vertical angle.
- Predecessor of the Strada-B, wider distribution than ever before.
- Special care taken to make a uniform white or warm white illumination. Lenses work well with other colors, too.
- Lens material optical grade PMMA. Allows use of high current and temperature conditions
- Best available optical efficiency, approximately 95%.
- Fastening to heat sink with or without PU foam adhesive tape of automotive grade, please select which suits the best for your needs.

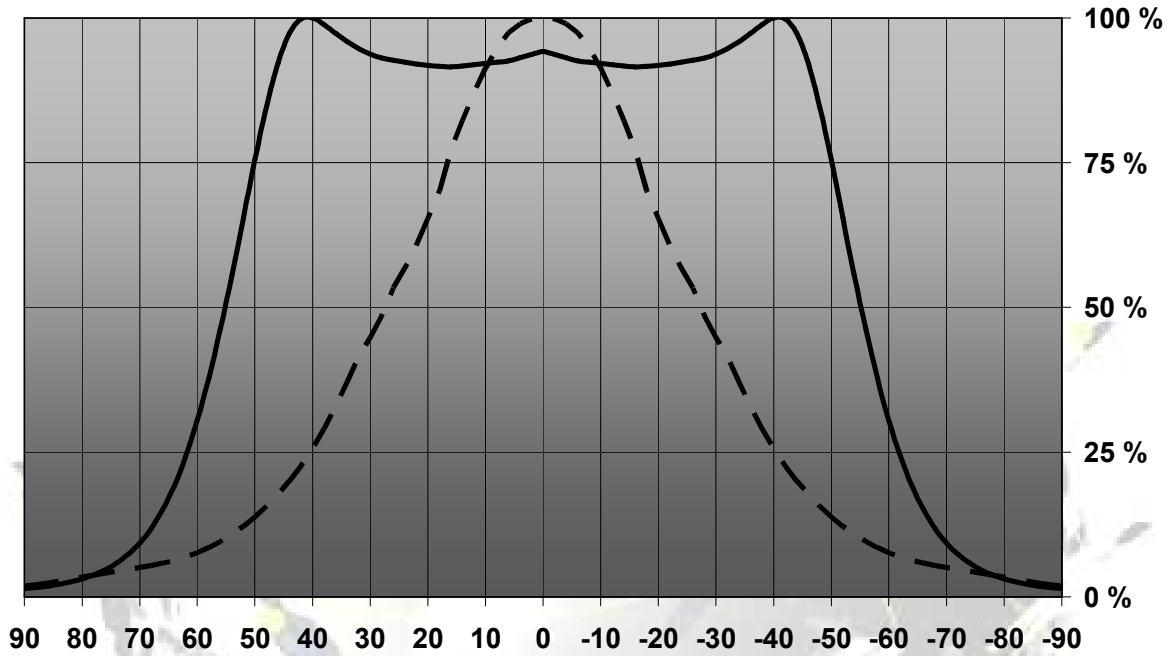
## LENS TYPES

NAME	ORDERING CODE	FWHM Angle
Strada-DN-N83	C11244 Strada-DN-N83	±28°x±55°
Strada-DN-N83-TAPE	CA11245 Strada-DN-N83-tape	±28°x±55°

© Ledil Oy – PRELIMINARY - Subject to change without prior notice

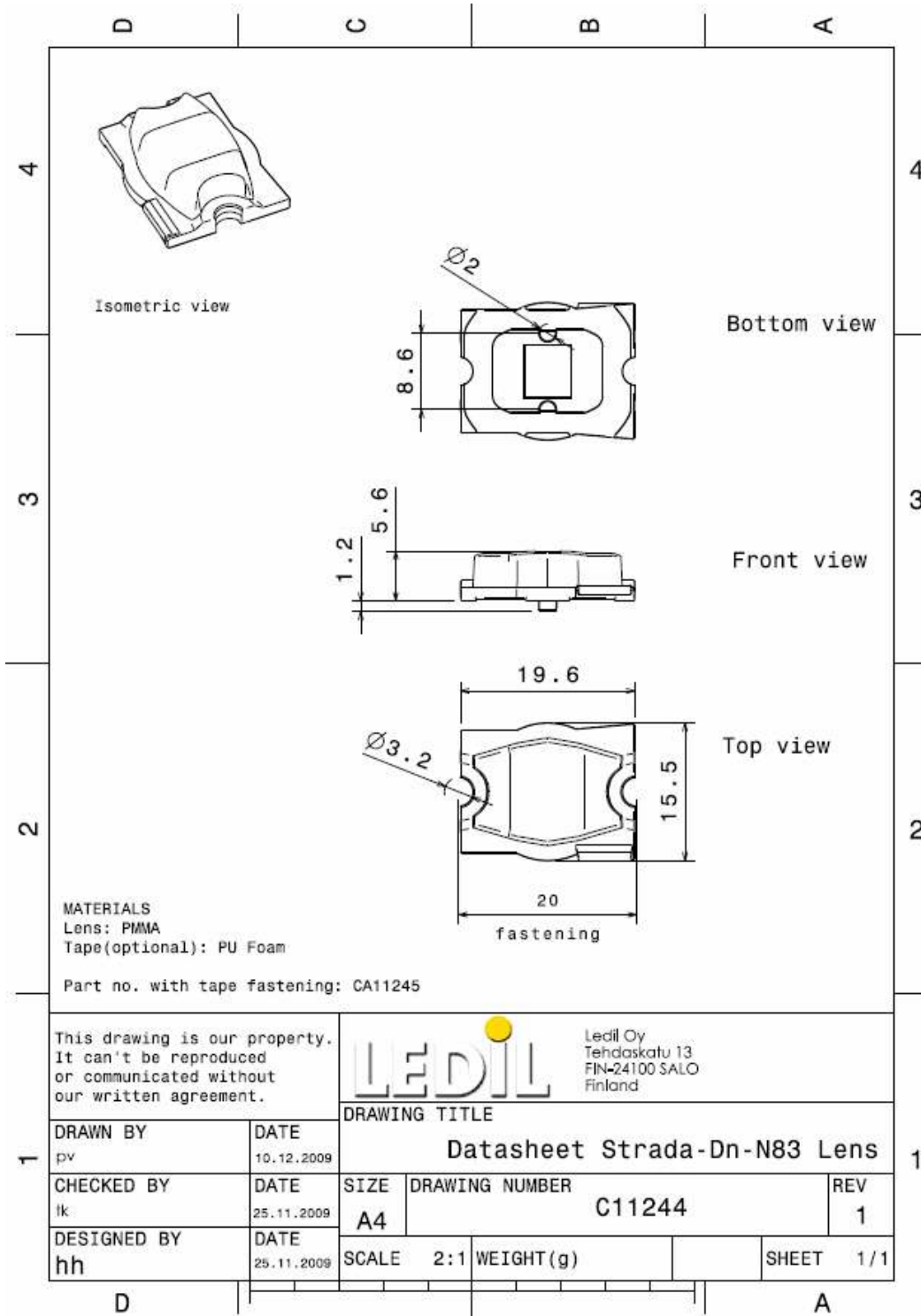
## MEASUREMENT DATA

Relative Intensity of C11244\_Strada-DN-N83



© Ledil Oy – PRELIMINARY - Subject to change without prior notice

## DRAWINGS



© Ledit Oy – PRELIMINARY - Subject to change without prior notice