

GT4-N119 lenses for Nichia N119 series of LEDs



- Specially designed for Nichia N119 series of LEDs.
- Special care taken to make a uniform white or warm white illumination. Lenses work well with other colors, too.
- Lens material optical grade PMMA. Allows use of high current and temperature conditions (105°C/220°F)
- Best available optical efficiency, up to 90%.
- Diameter 35mm (MR11).

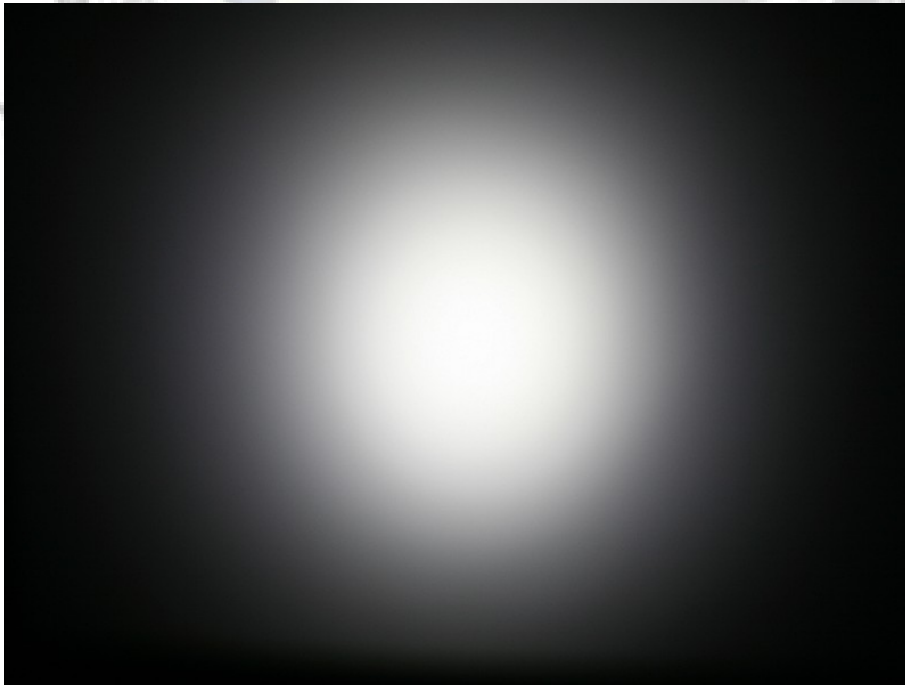
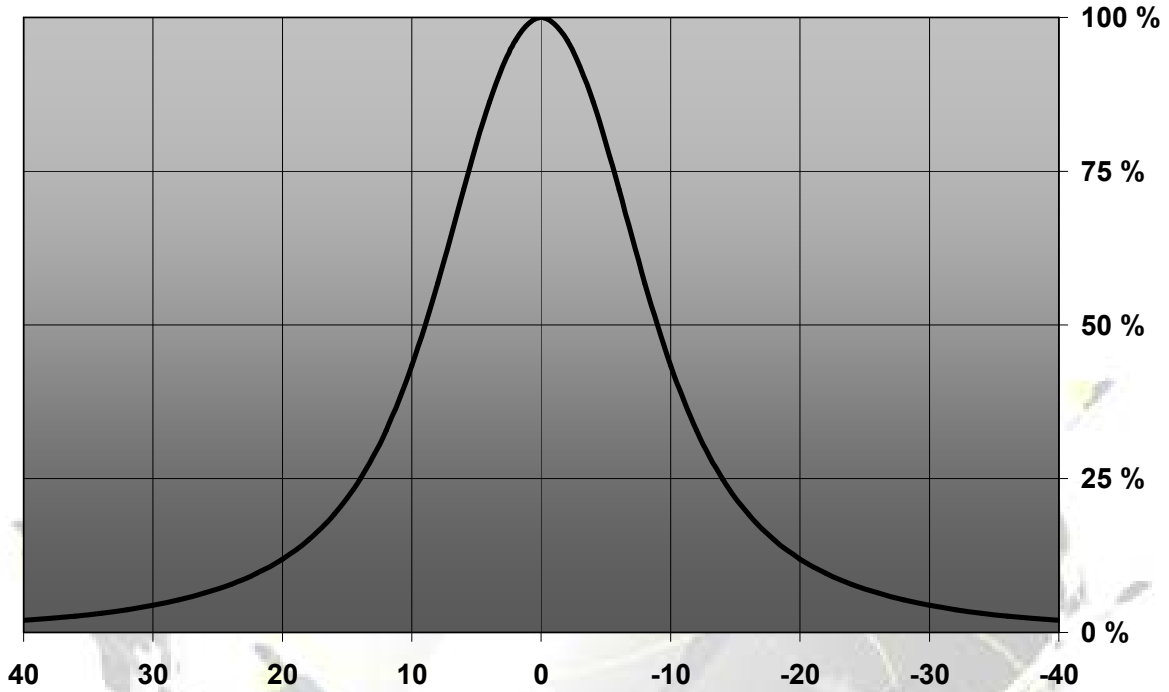
LENS TYPES

NAME	ORDERING CODE	FWHM
GT4-N119 SMOOTH SPOT	C10971_GT4-N119-S	±9°
GT4-N119 MEDIUM	C10972_GT4-N119-M	±14°
GT4-N119 WIDE	C10973_GT4-N119-W	±18°
GT4-N119 WW	C10974_GT4-N119-WW	±31°

© Ledil Oy – PRELIMINARY - Subject to change without prior notice

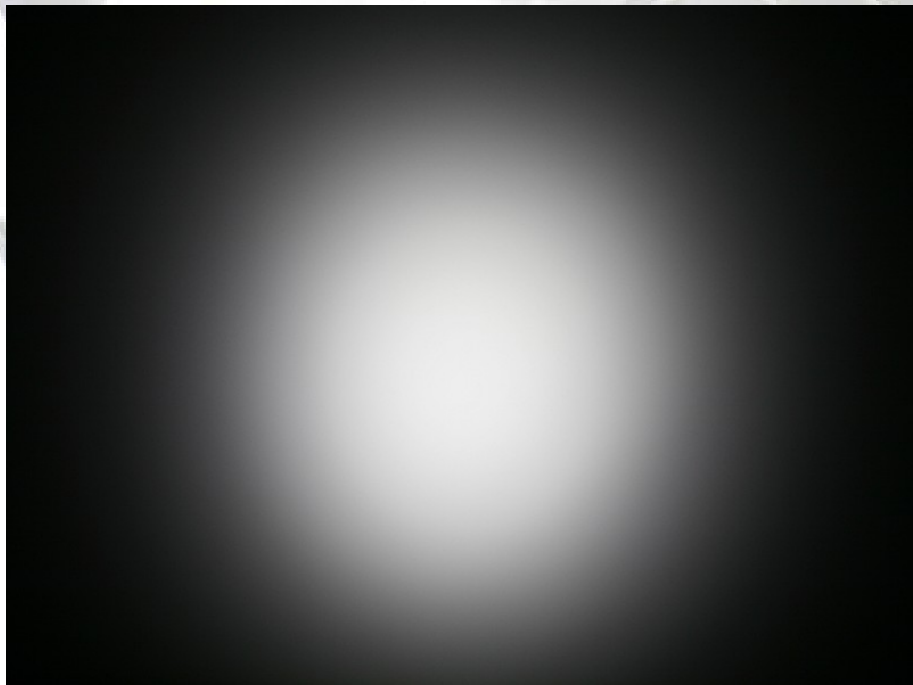
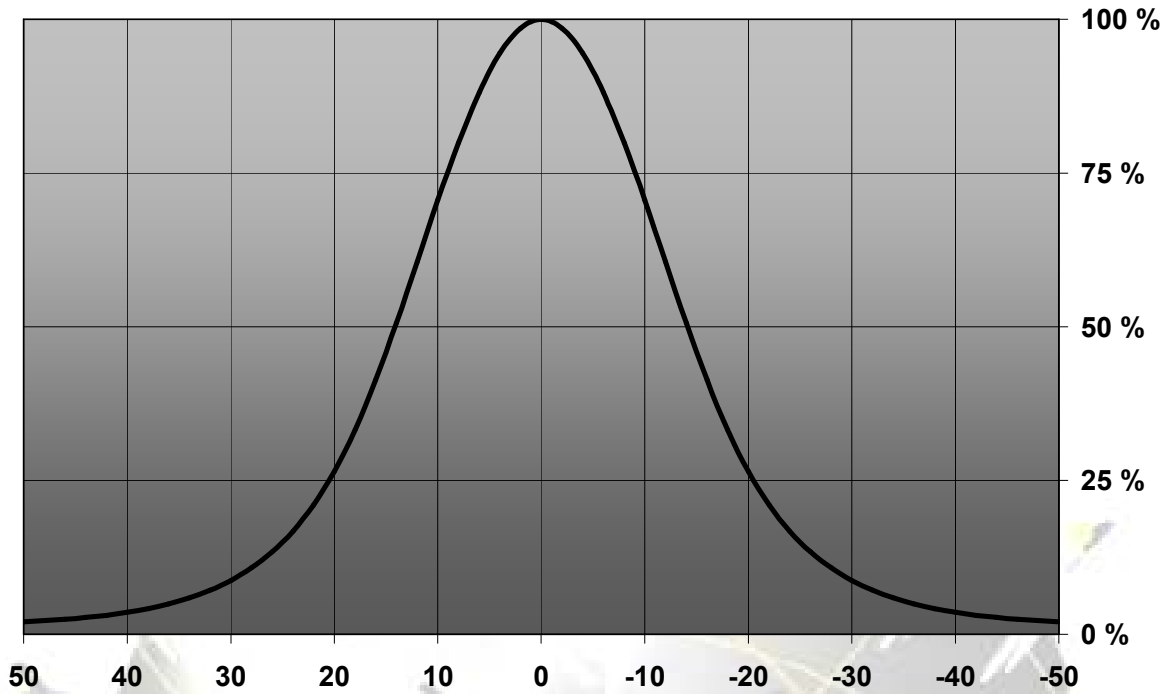
MEASUREMENT DATA

Relative Intensity of C10971_GT4-N119-S



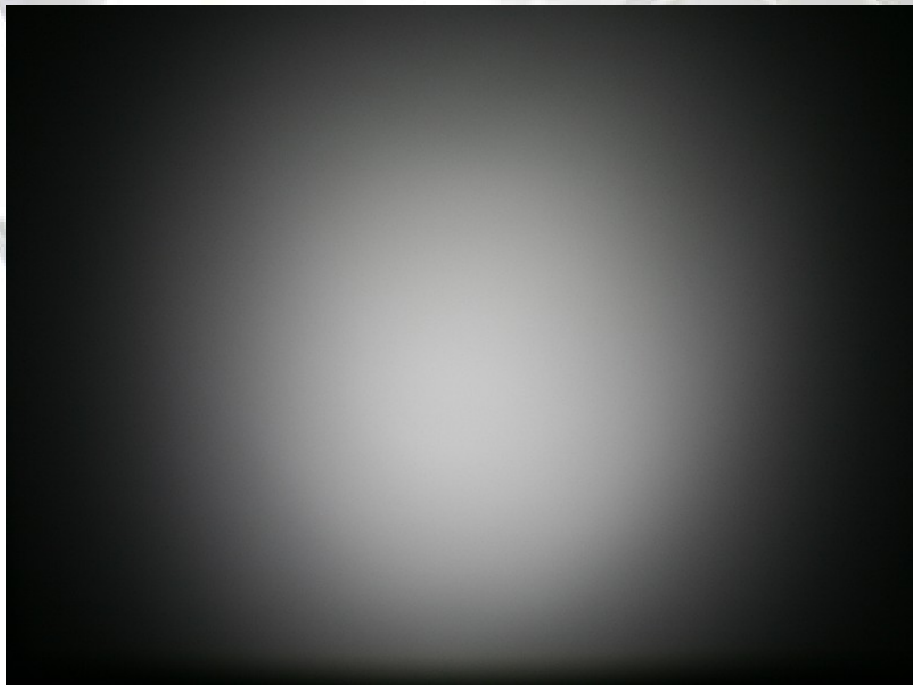
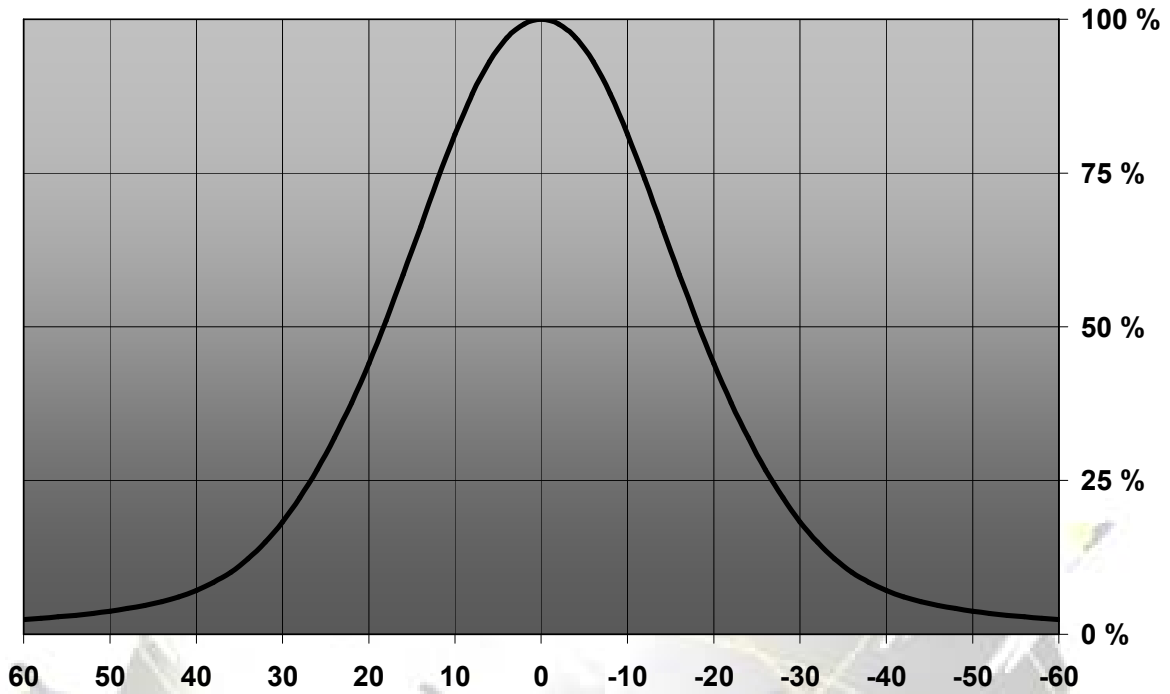
© Ledil Oy – PRELIMINARY - Subject to change without prior notice

Relative Intensity of C10972_GT4-N119-M



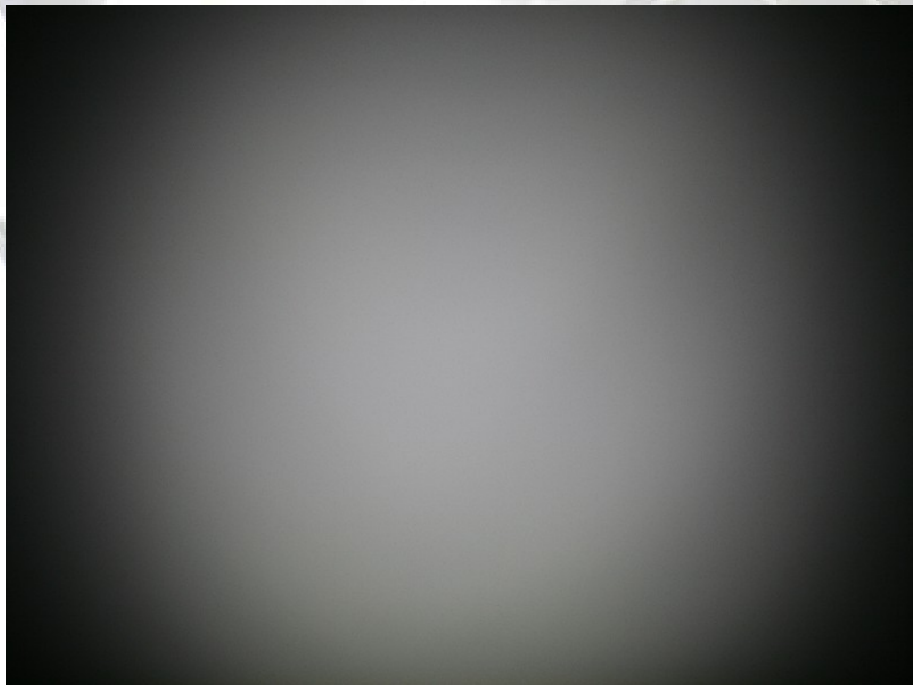
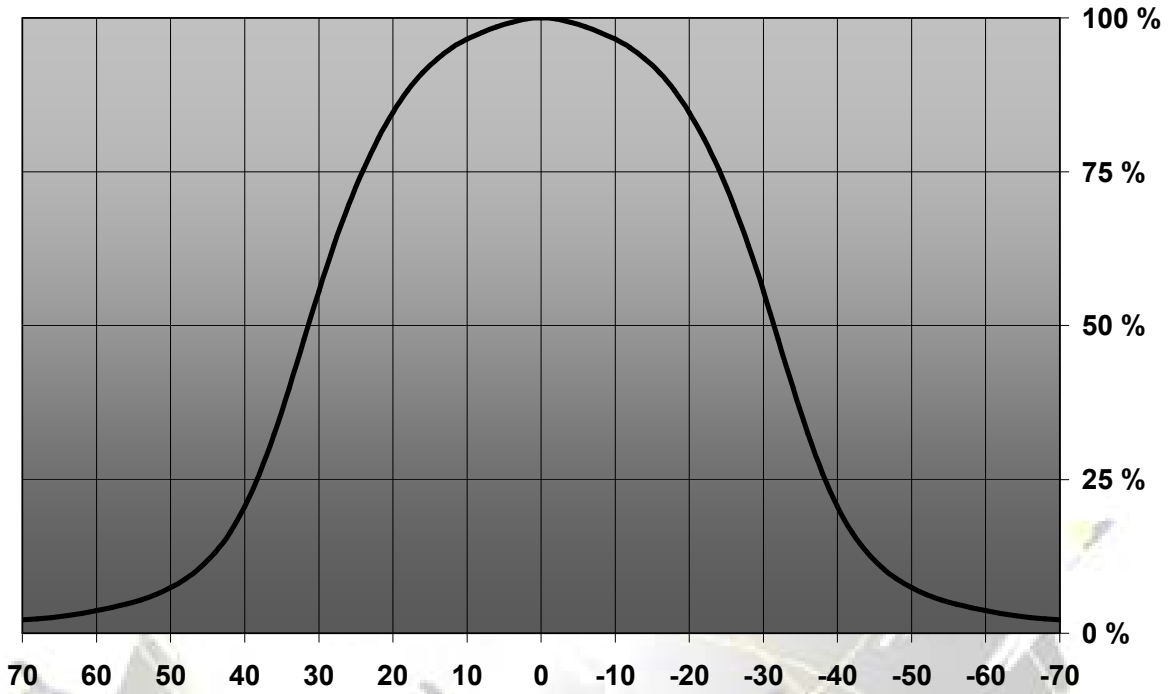
© Ledil Oy – PRELIMINARY - Subject to change without prior notice

Relative Intensity of C10973_GT4-N119-W



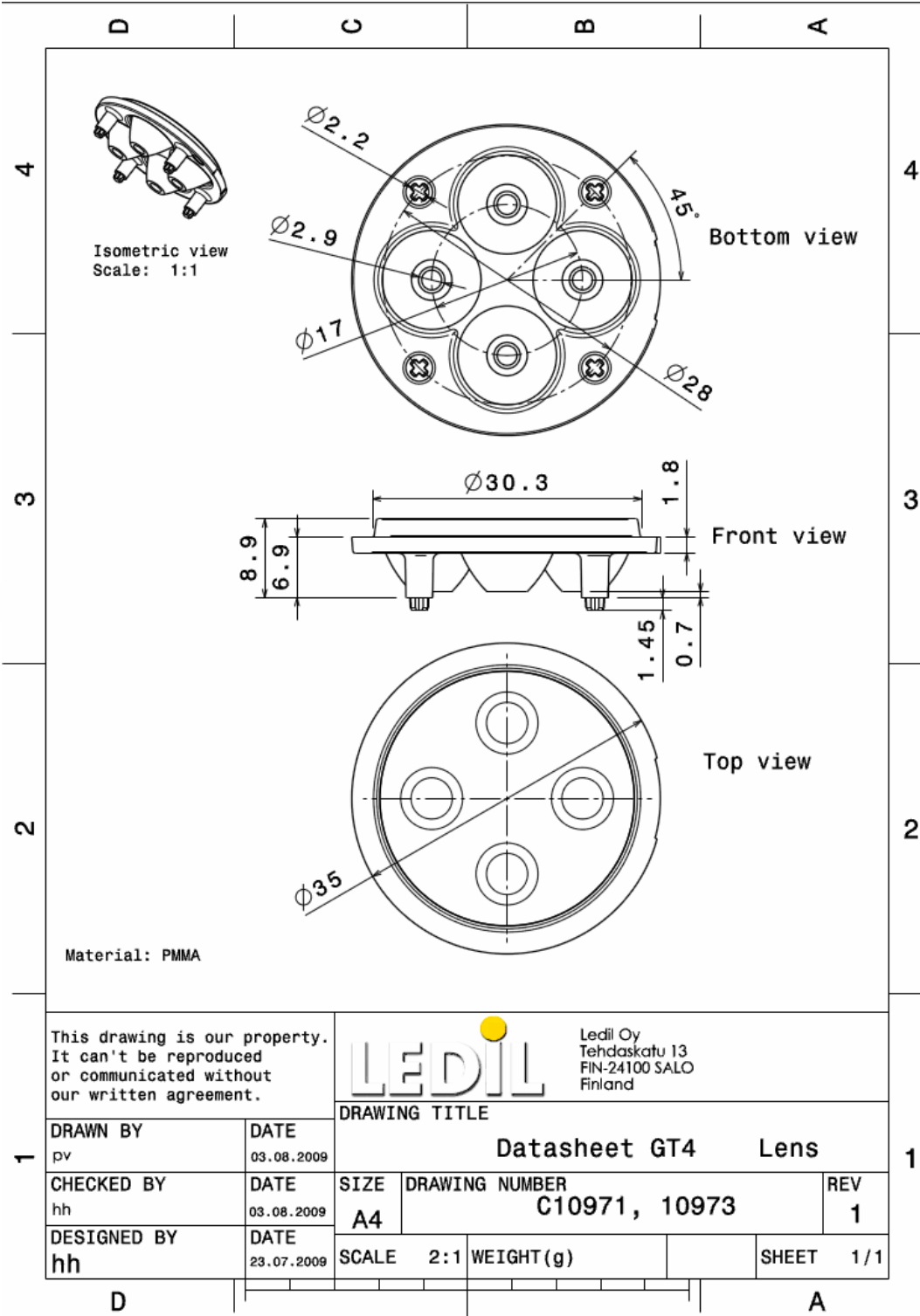
© Ledil Oy – PRELIMINARY - Subject to change without prior notice

Relative Intensity of C10974_GT4-N119-WW



© Ledil Oy – PRELIMINARY - Subject to change without prior notice

DRAWINGS



© Ledil Oy – PRELIMINARY - Subject to change without prior notice