

Tina-Pin-RE lenses for Luxeon Rebel LEDs



LUXEON



- Designed & optimized for Luxeon Rebel series of LEDs
- Lens material optical grade PMMA. Allows use of high current and temperature conditions (105°C/220°F)
- Integrated holder with small position pins. See drawing below for more details
- Best available optical efficiency, over 90%, with an extremely good cutoff of light
- Fastening to heat sink with a PU foam adhesive tape of automotive grade (included)
- Compact dimensions 16.1 x 10.1 mm.

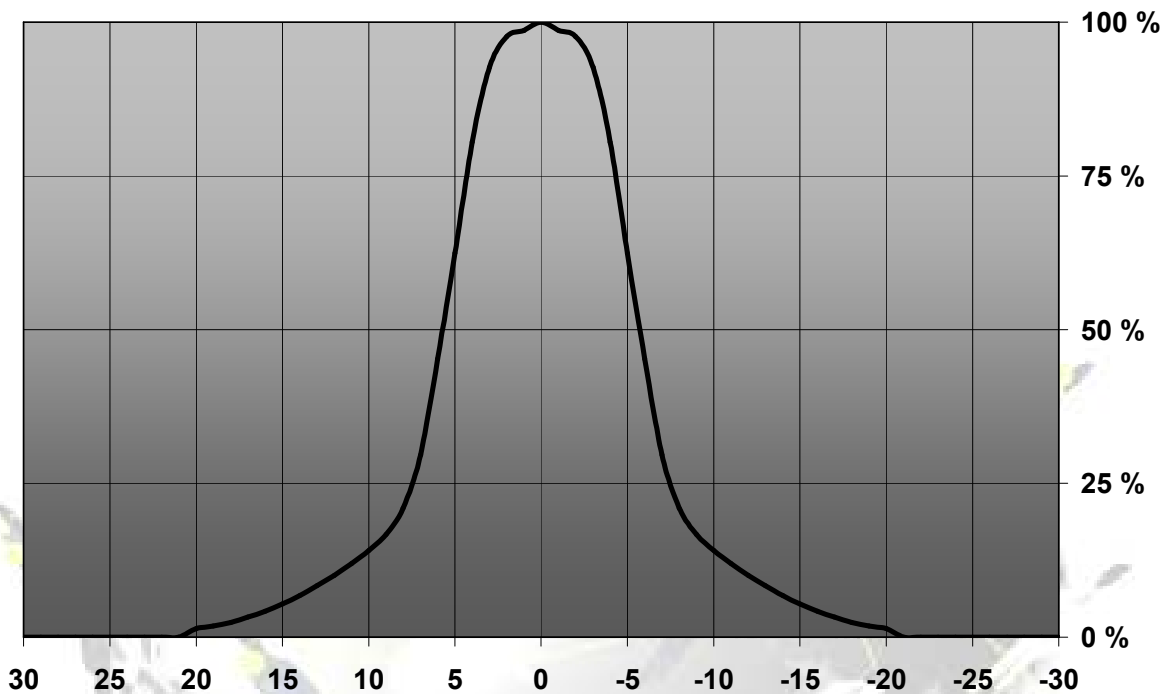
LENS TYPES

NAME	ORDERING CODE	FWHM Angle
Tina-Pin-RE Real Spot	FA11212_Tina-Pin-RE-RS	±6°
Tina-Pin-RE Diffuser	FA11209_Tina-Pin-RE-D	±7.5°
Tina-Pin-RE Medium	FA11210_Tina-Pin-RE-M	±16°
Tina-Pin-RE Oval	FA11203_Tina-Pin-RE-O	±7° x ±18°
Tina-Pin-RE Wide	FA11211_Tina-Pin-RE-W	±22°

© Ledil Oy – PRELIMINARY - Subject to change without prior notice

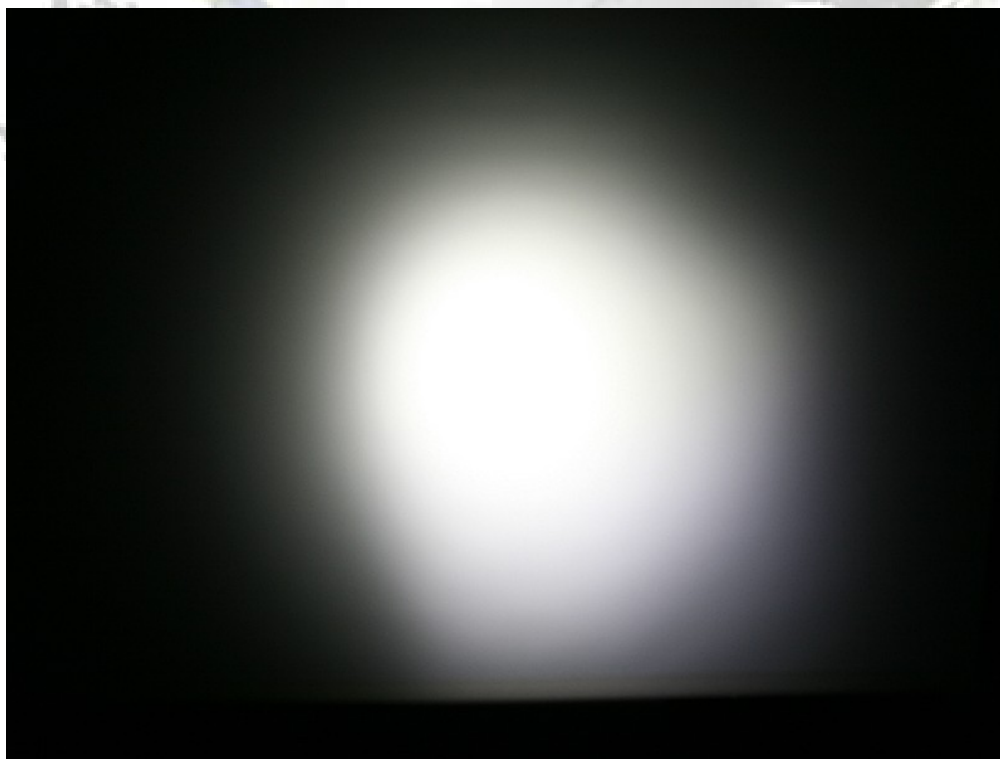
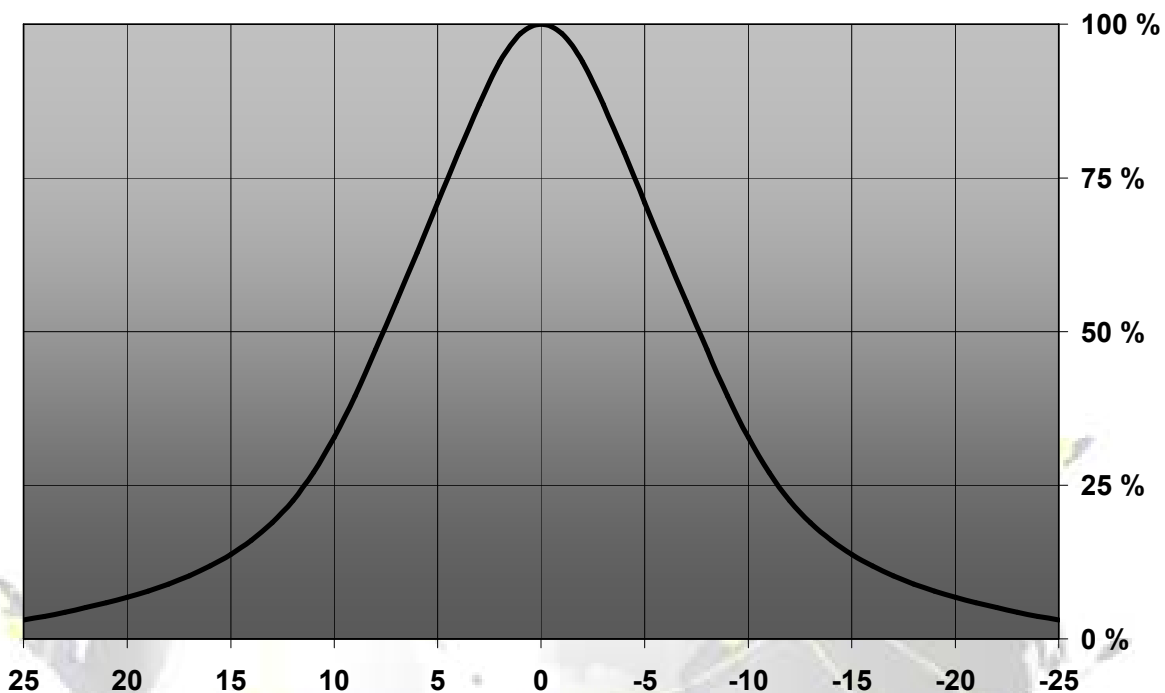
MEASUREMENTS

Relative Intensity of FA11212_Tina-RE-RS



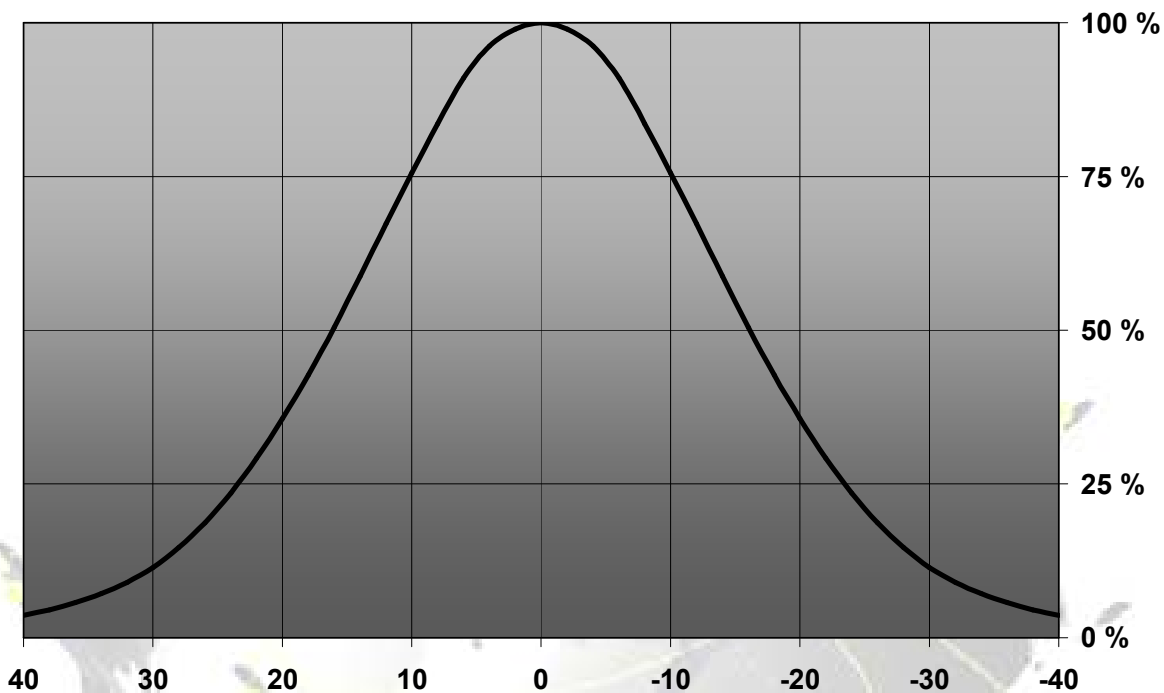
© Ledil Oy – PRELIMINARY - Subject to change without prior notice

Relative Intensity of FA11209_Tina-RE-D



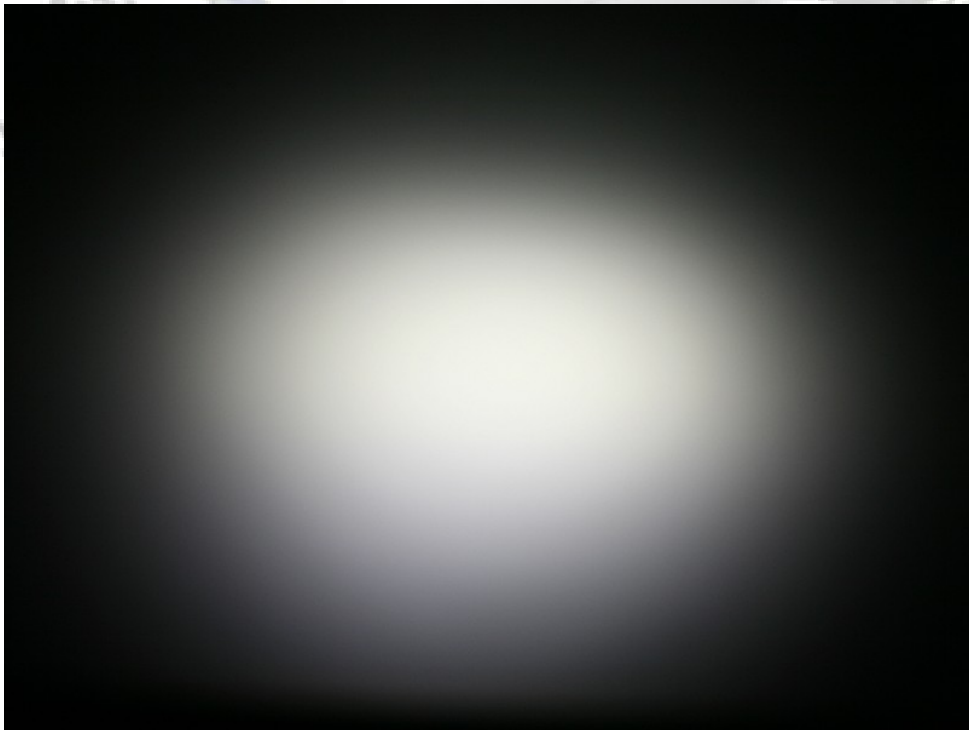
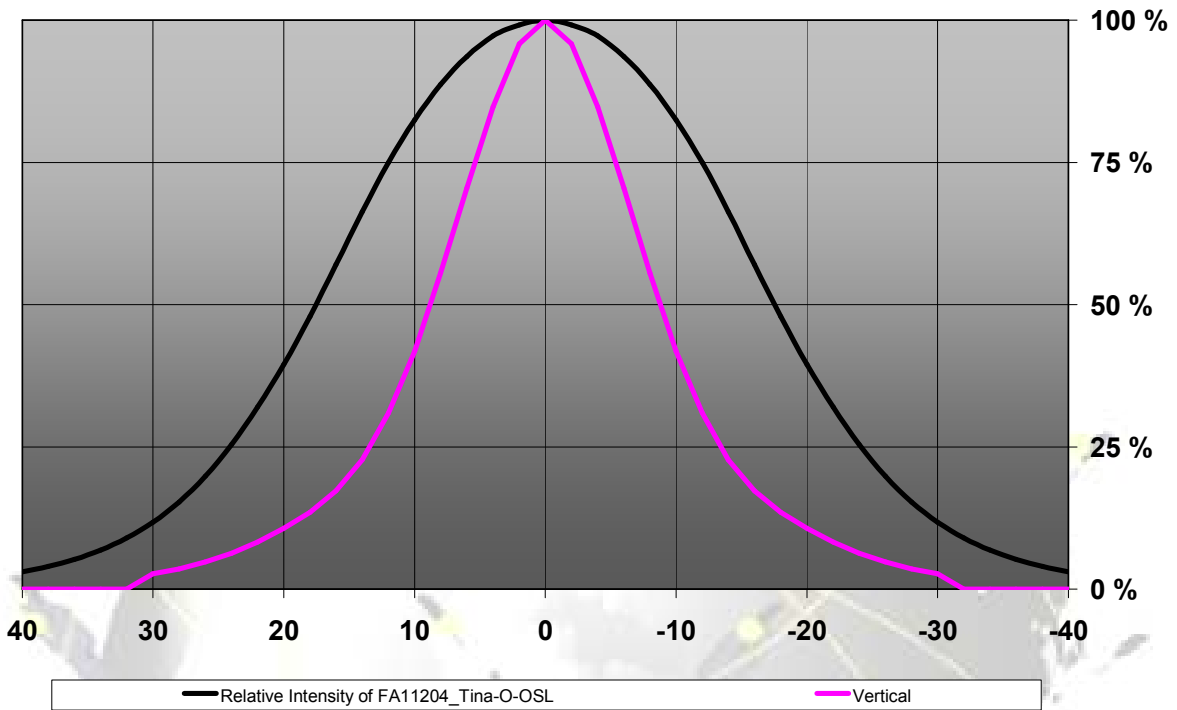
© Ledil Oy – PRELIMINARY - Subject to change without prior notice

Relative Intensity of FA11210_Tina-RE-M



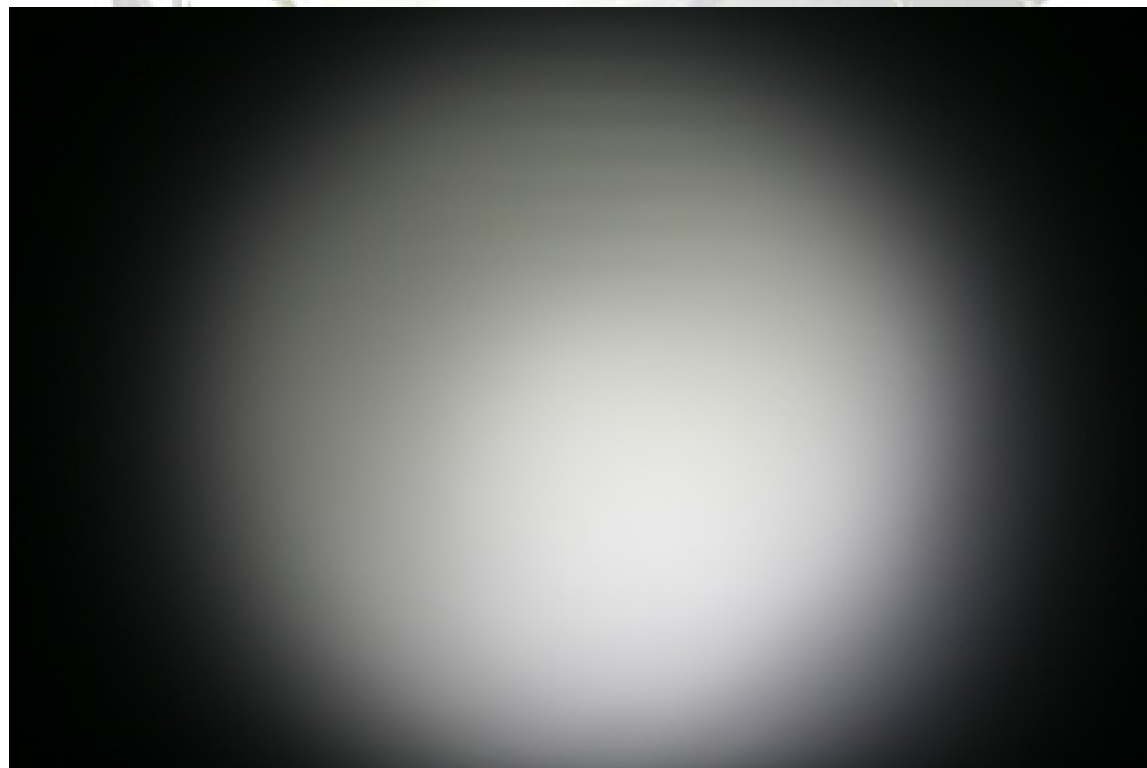
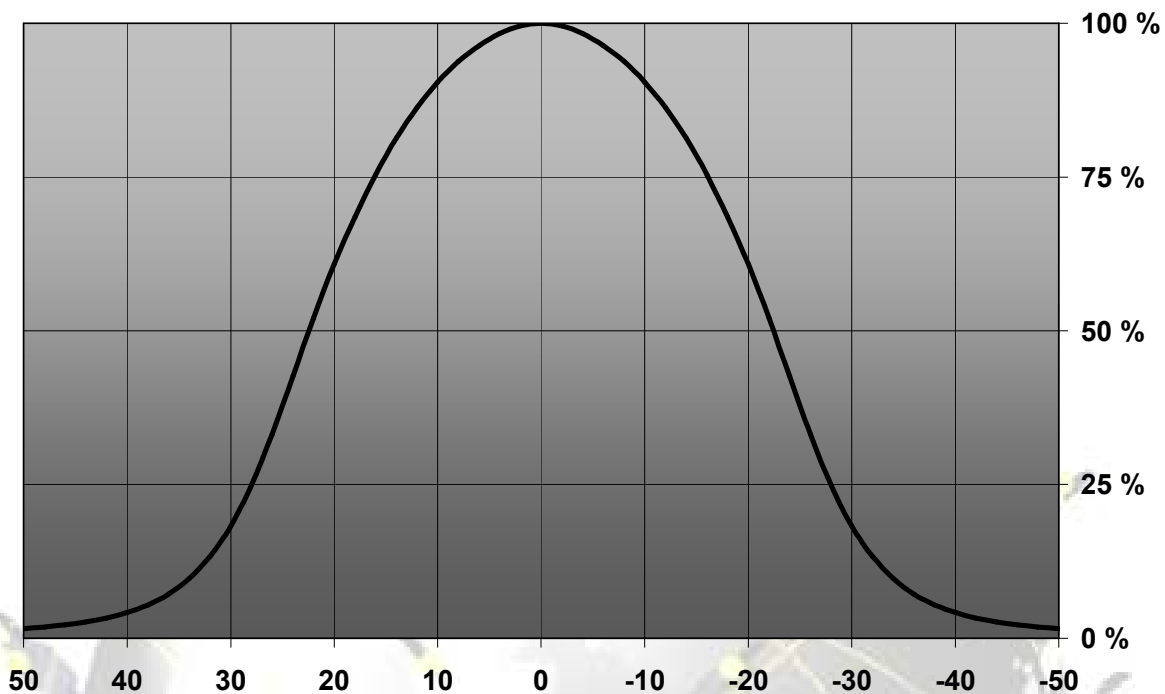
© Ledil Oy – PRELIMINARY - Subject to change without prior notice

Relative Intensity of FA11204_Tina-O-OSL



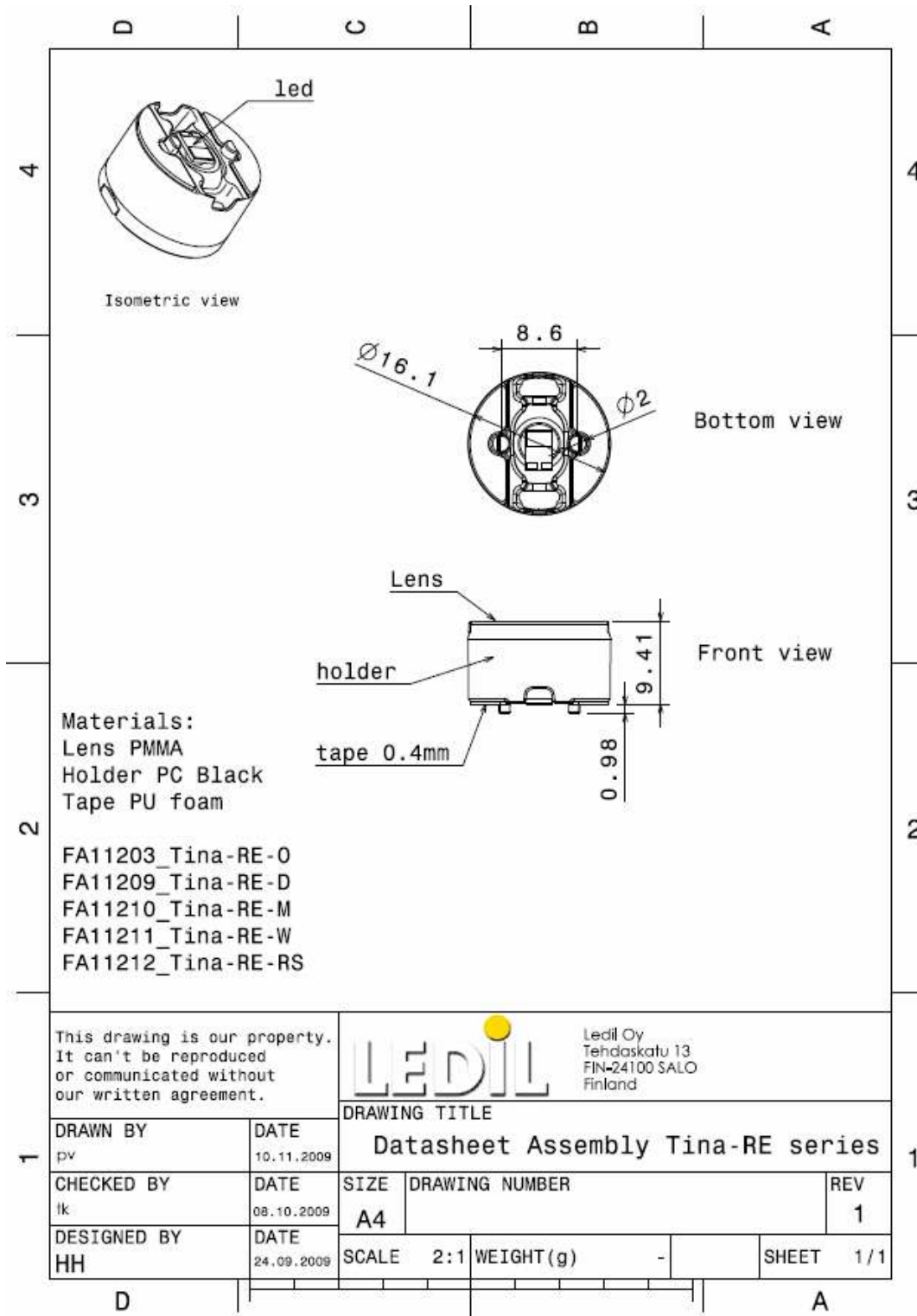
© Ledil Oy – PRELIMINARY - Subject to change without prior notice

Relative Intensity of FA11211_Tina-RE-W



© Ledil Oy – PRELIMINARY - Subject to change without prior notice

DRAWINGS



© Ledil Oy - PRELIMINARY - Subject to change without prior notice