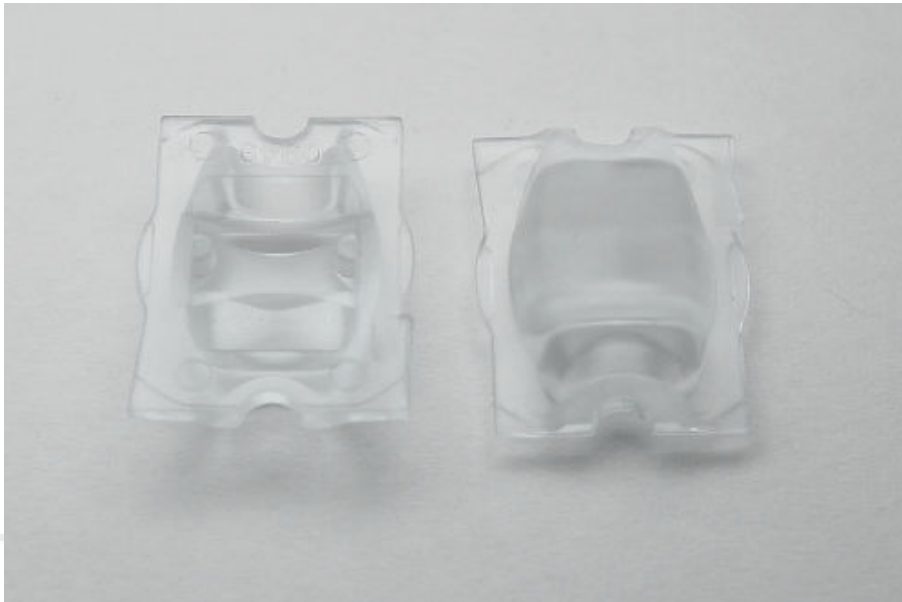


STRADA-B2-RE LENSES FOR LUXEON REBEL series of LEDs



C10949_Strada-B2-RE

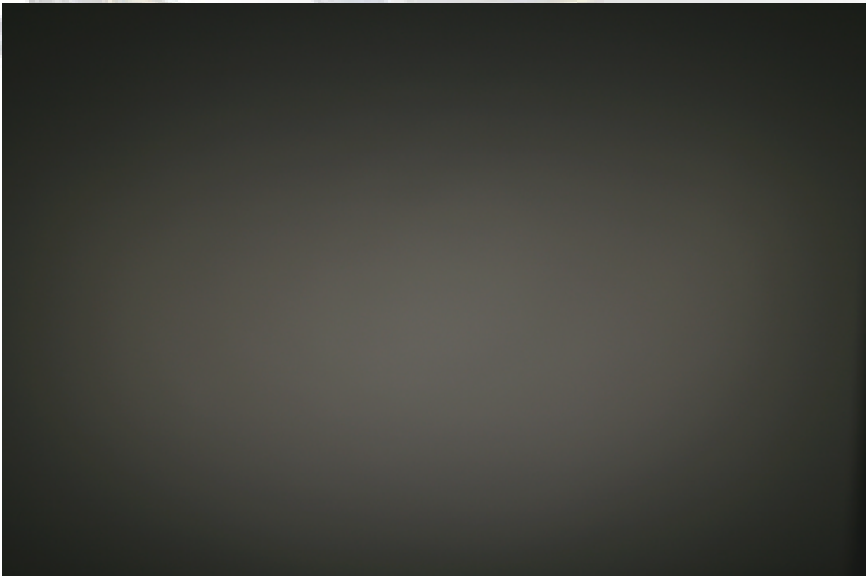
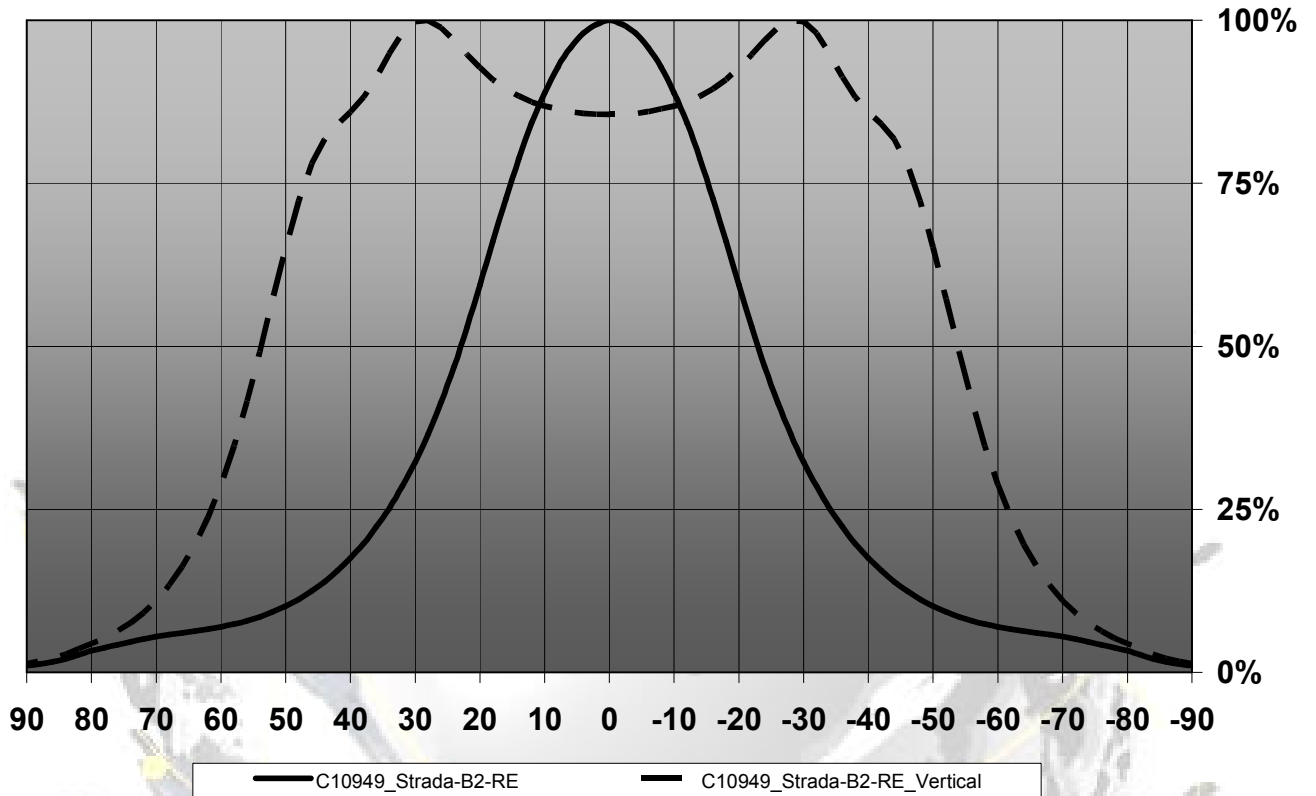
- Specially designed for Luxeon Rebel series of LEDs.
- New extremely wide street light design with very wide horizontal and vertical angle.
- Special care taken to make a uniform white or warm white illumination. Lenses work well with other colors, too.
- Lens material optical grade PMMA with high UV and temperature resistance (105°C/220°F)
- Best available optical efficiency, approximately 96%.
- Fastening to heat sink with positioning pins or with PU foam adhesive tape of automotive grade, please select which suits the best for your needs.

LENS TYPES

NAME	ORDERING CODE	FWHM Angle
Strada-B2-RE	C10949_Strada-B2-RE	±54° x ±23°
Strada-B2-RE-tape	CA10950_Strada-B2-RE-tape	±54° x ±23°

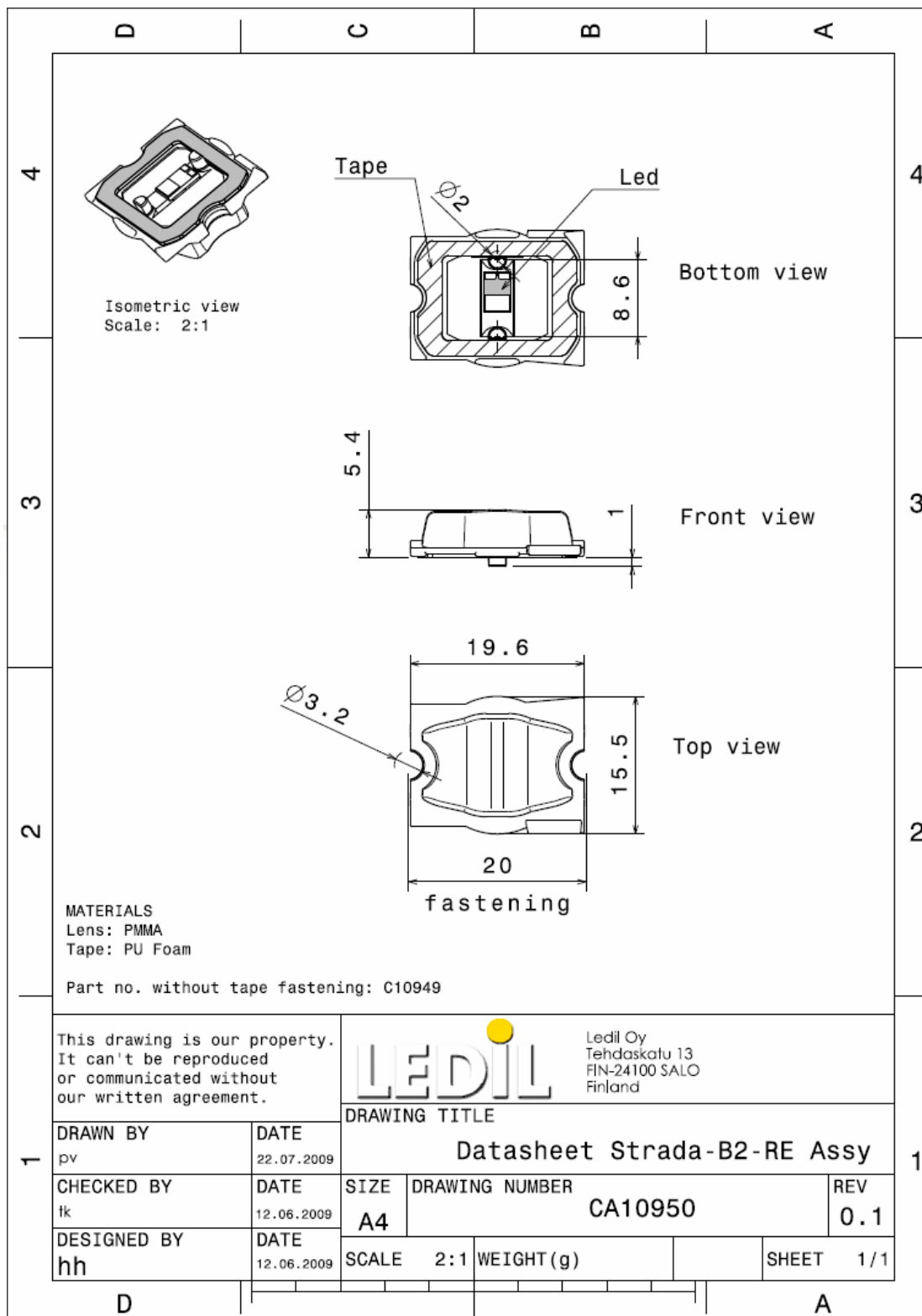
MEASUREMENT DATA

Relative Intensity of C10949_Strada-B2-RE



© Ledil Oy – PRELIMINARY - Subject to change without prior notice

DRAWINGS



EULUMDAT & IES FILES AVAILABLE BY REQUEST

© Ledil Oy – PRELIMINARY - Subject to change without prior notice