

**RES SQUARE lenses for LUXEON Rebel LEDs**

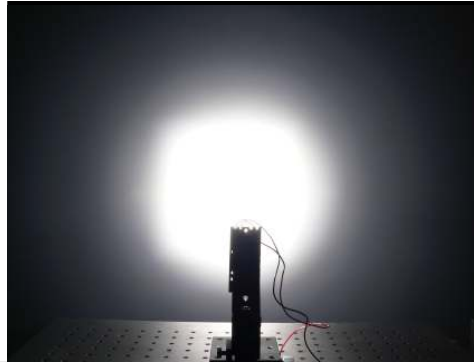
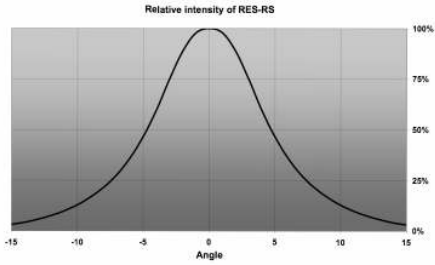

- Designed & optimized for Luxeon Rebel series of LEDs
- Lens material optical grade PC with high UV and temperature resistance (130°C/220°F). Allows use of high current and temperature conditions
- Best available optical efficiency, up to 90%, with an extremely good cutoff of light
- Integrated holder. Fastening to heat sink with a PU foam adhesive tape of automotive grade
- Compact dimensions 21.6 x 21.6 mm. Square form enables easy build of matrix without any gaps between lenses.

**LENS TYPES**

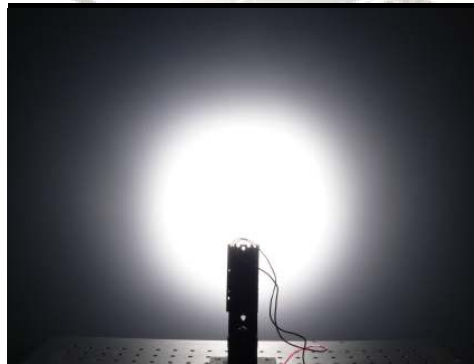
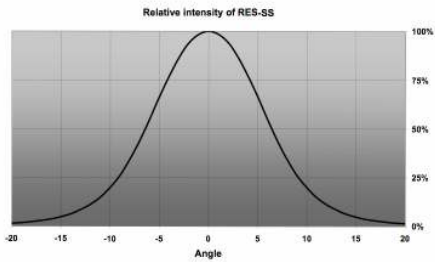
NAME	ORDERING CODE	FWHM Angle
RE SQUARE REAL SPOT	FA10856_RES-RS	±4°
RE SQUARE SMOOTH SPOT	FA10853_RES-SS	±6°
RE SQUARE DIFFUSER	FA10852_RES-D	±8°
RE SQUARE MEDIUM	FA10851_RES-M	±15°
RE SQUARE WIDE	FA10855_RES-W	±17°
RE SQUARE WIDE-V6	FA10903_RES-W-V6	±27°
RE SQUARE OVAL	FA10854_RES-O	±6° x ±23°

## MEASUREMENTS

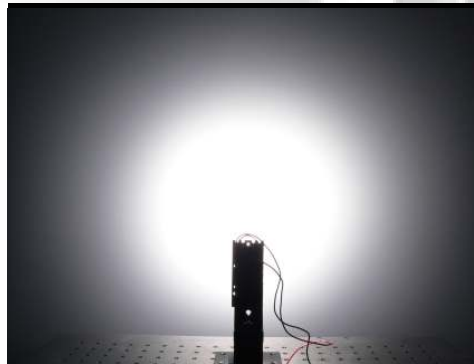
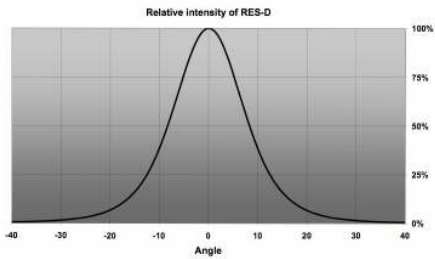
### RES-RS



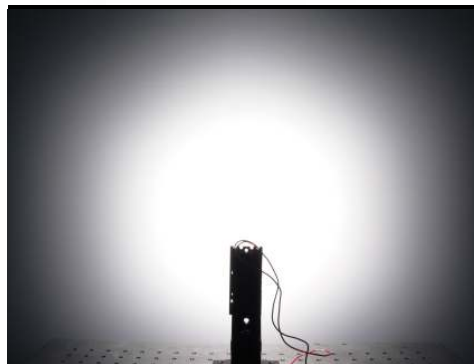
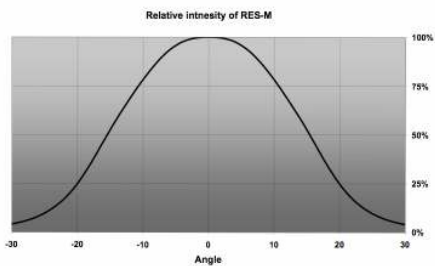
### RES-SS



### RES-D

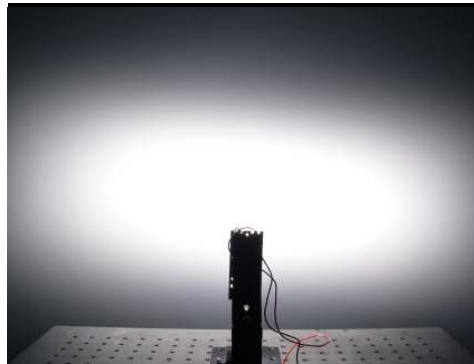
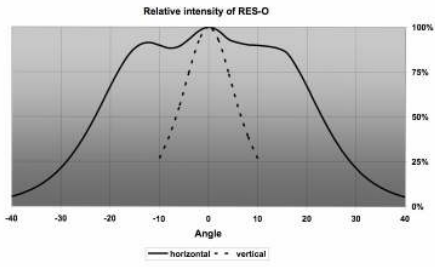


### RES-M

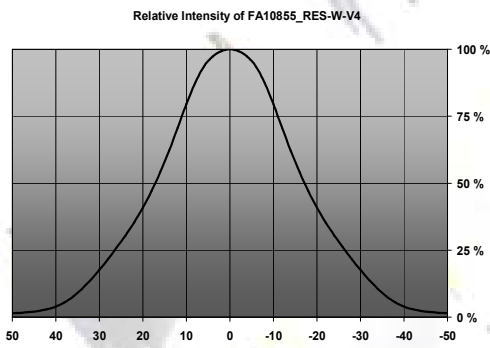


© Ledil Oy – PRELIMINARY - Subject to change without prior notice

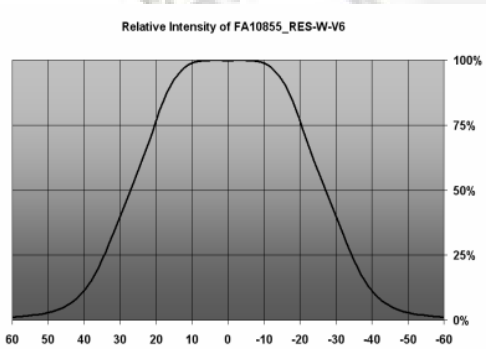
## RES-O



## RES-W-V4



## RES-W-V6



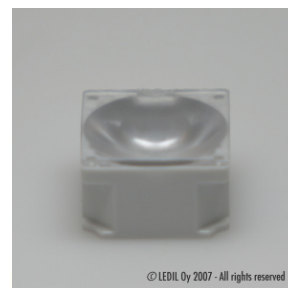
## PHOTOS



**RES-RS**



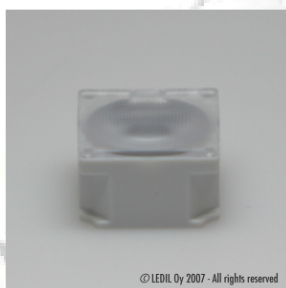
**RES-SS**



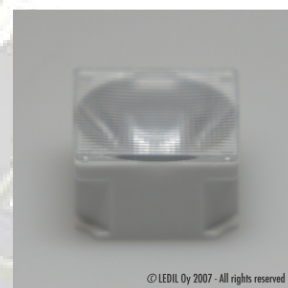
**RES-D**



**RES-M**

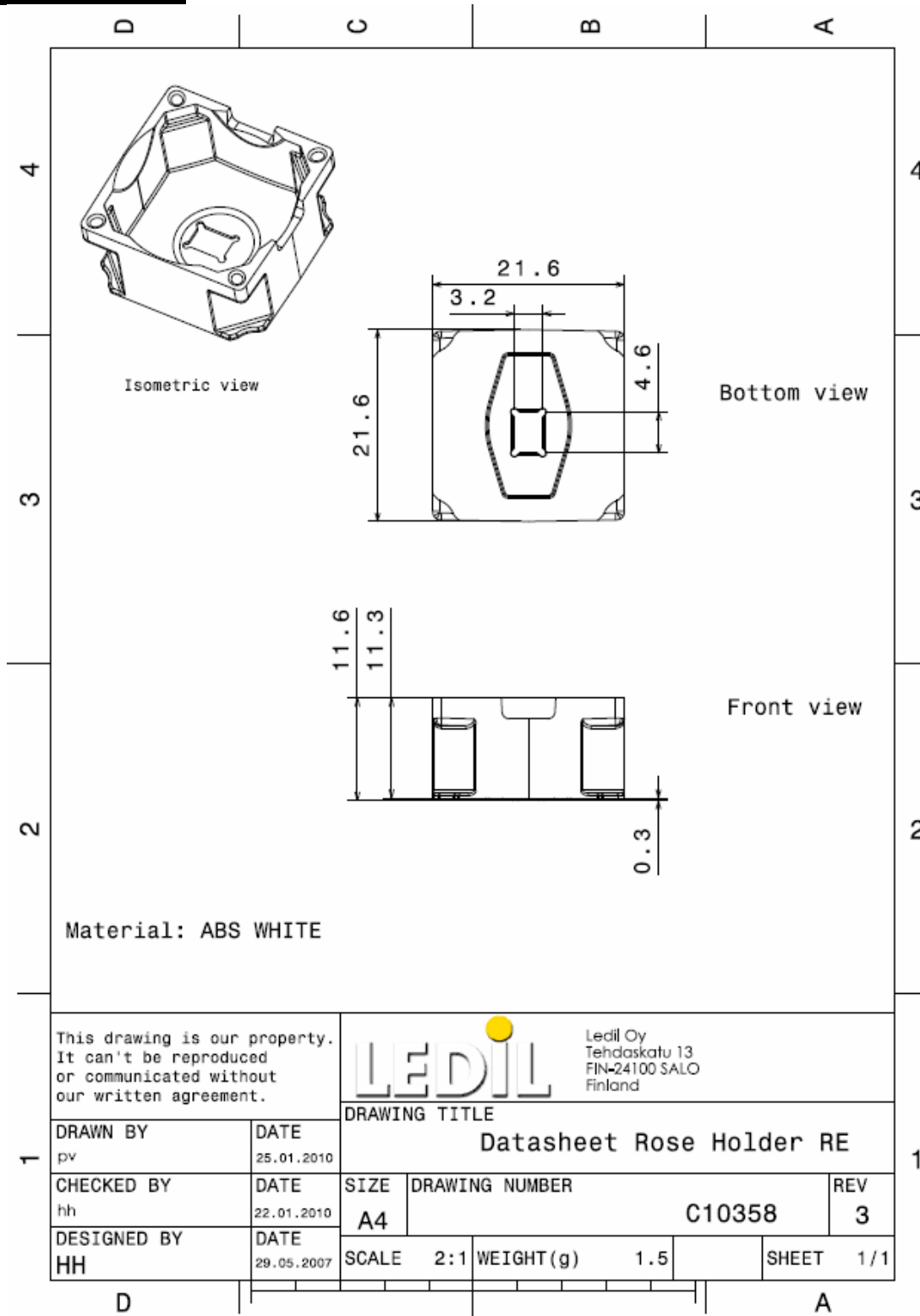


**RES-W**



**RES-O**

## DRAWING



© Ledil Oy - PRELIMINARY - Subject to change without prior notice