

RER-7 lenses for Luxeon Rebel LEDs (UPDATED 20100301)



RER-7-MD



RER-7-W



RER-7-WW



RER-7-WW-PC

- Lens material optical grade PMMA with high UV and temperature resistance (105°C/220°F)
- High optical efficiency, >85%
- No lens holder. Attaching of the lens to customer's heat sink by gluing. For detailed mounting information, please look at the drawing
- Diameter 38 mm (MR11)

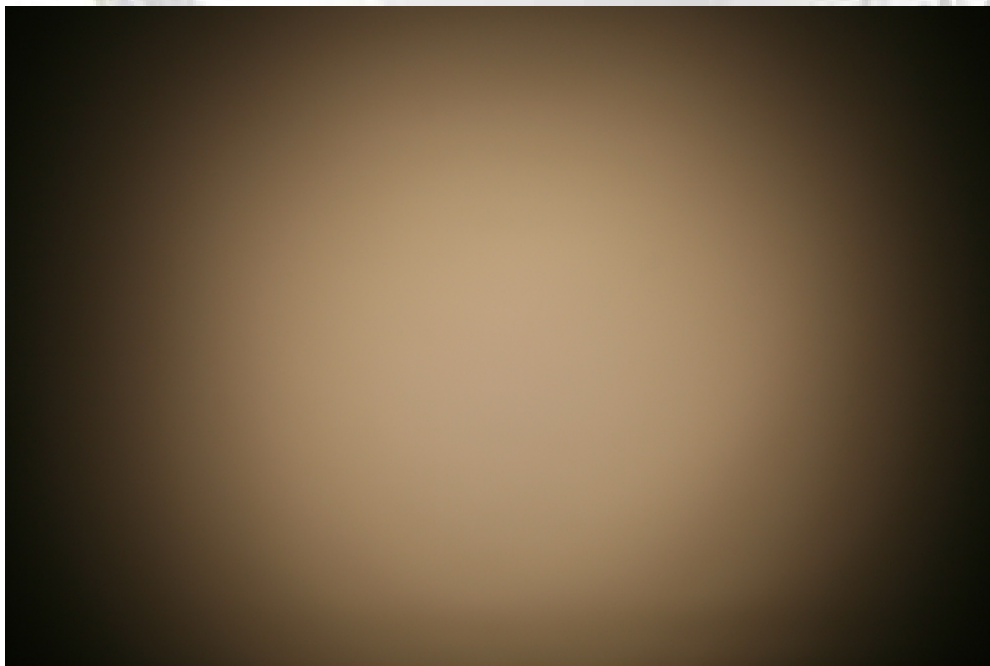
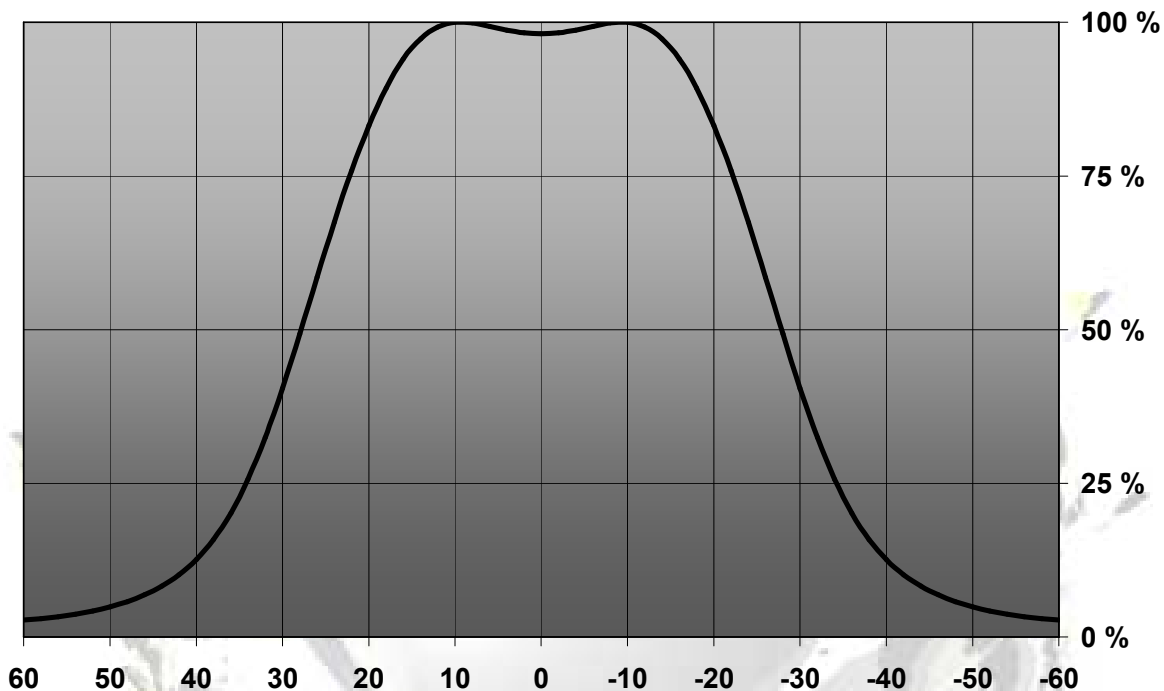
LENS TYPES

NAME	ORDERING CODE	FWHM Angle
RER-7 MD	C11232_RER-7-MD	±N/A°
RER-7-W	C11230_RER-7-W	±N/A°
RER-7 WW	C11231_RER-7-WW	±28°
RER-7 WW	C11254_RER-7-WW-PC	±29°

© Ledil Oy – PRELIMINARY - Subject to change without prior notice

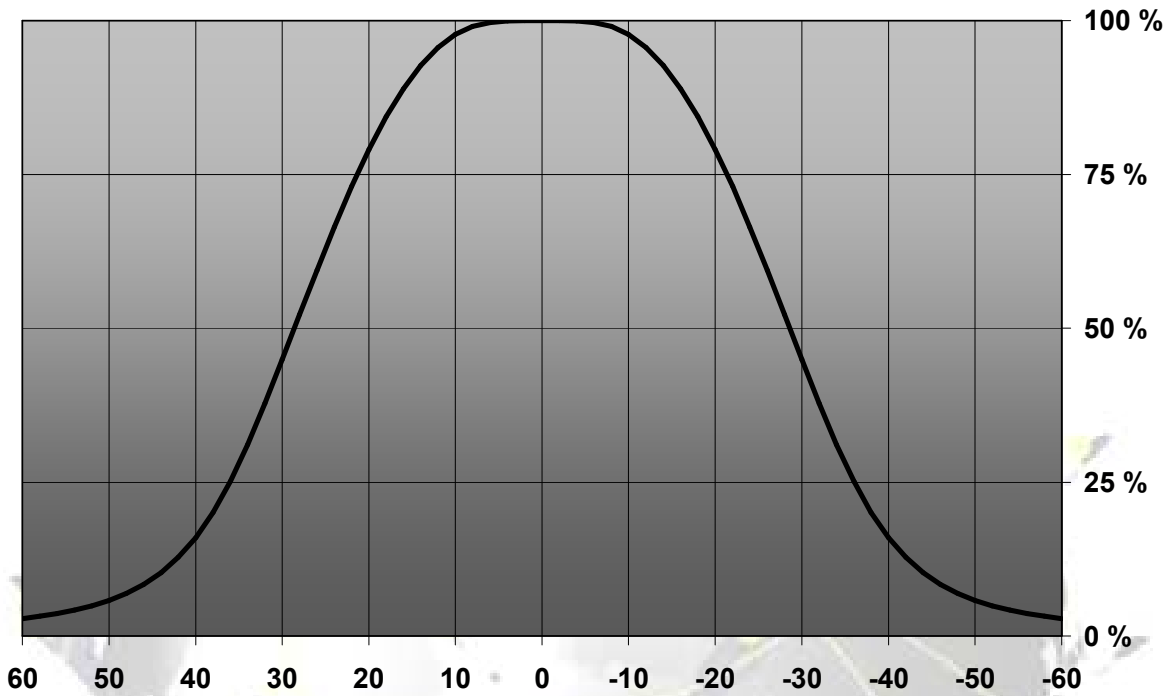
Measurement data & Drawing

Relative Intensity of C11231_RER-7-WW

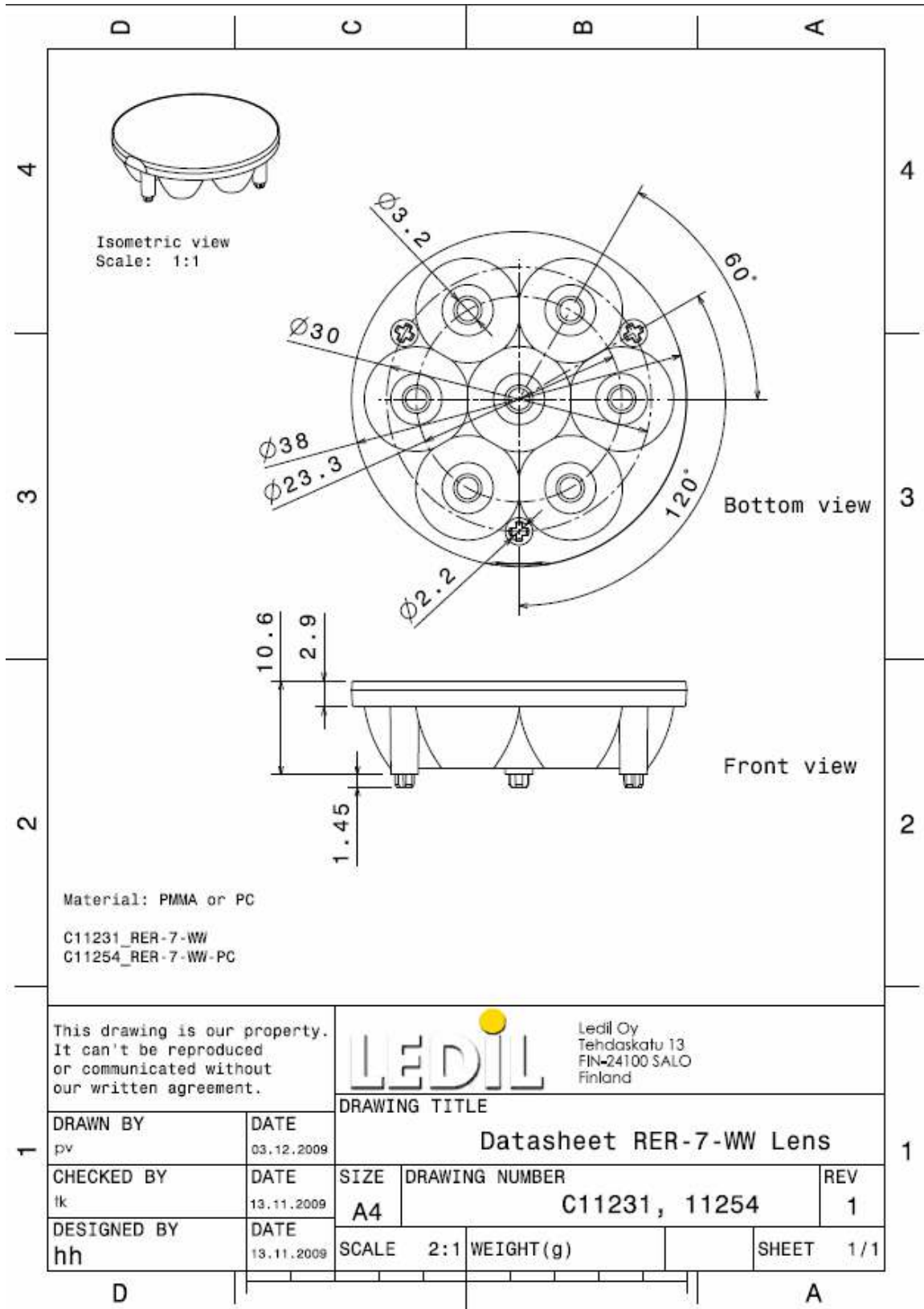


© Ledil Oy – PRELIMINARY - Subject to change without prior notice

Relative Intensity of C11254_RER-7-WW-PC



© Ledil Oy – PRELIMINARY - Subject to change without prior notice



© Ledil Oy - PRELIMINARY - Subject to change without prior notice