

LR1 LENSES FOR LUXEON REBEL LEDs



- Specially designed for Luxeon REBEL series of LEDs.
- Special care taken to make a uniform white or warm white illumination. Lenses work well with other colors, too.
- Lens material optical grade PMMA. Allows use of high current and temperature conditions
- Best available optical efficiency, more than 90%, with an extremely good cutoff of light
- Fastening of holden to PCB with appropriate adhesive, e.c. epoxy or polyurethane based. NOTE: DO NOT USE SUPERGLUE.

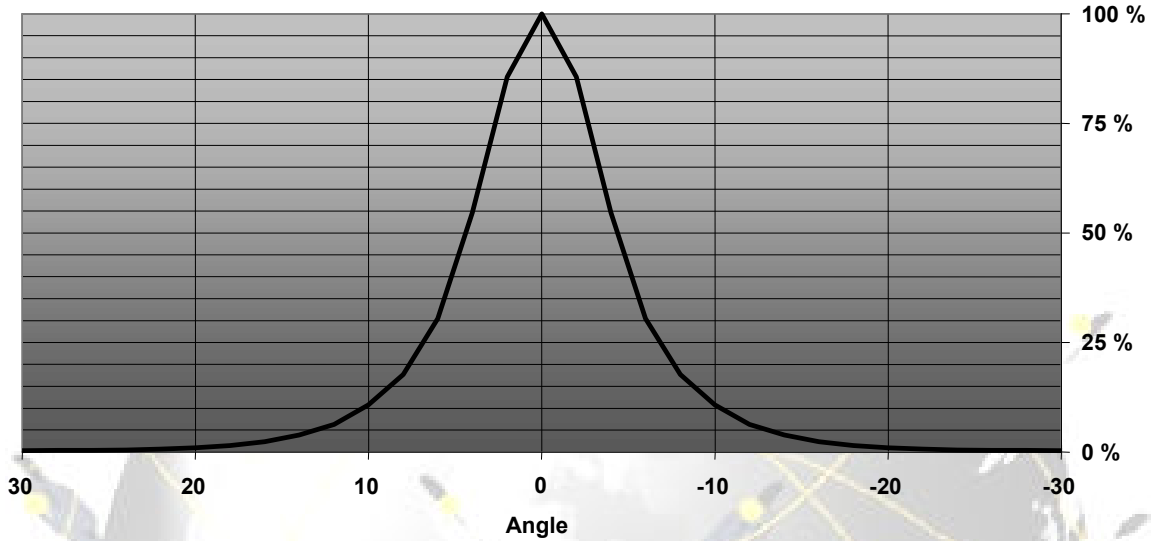
LENS TYPES

| NAME | ORDERING CODE | FWHM Angle |
|-----------------|------------------|--------------|
| LR1 REAL SPOT | FA10804_LR1-RS | ±4° |
| LR1 DIFFUSER | FA10806_LR1-D | ±5.5° |
| LR1 MEDIUM | FA10803_LR1-M | ±13° |
| LR1 OVAL | FA11106_LR1-O-90 | ±7.8° x ±19° |
| LR1 RECTANGULAR | FA10805_LR1-Rec | ±18° x ±10° |
| LR1 WIDE | FA10890_LR1-W | ±23° |

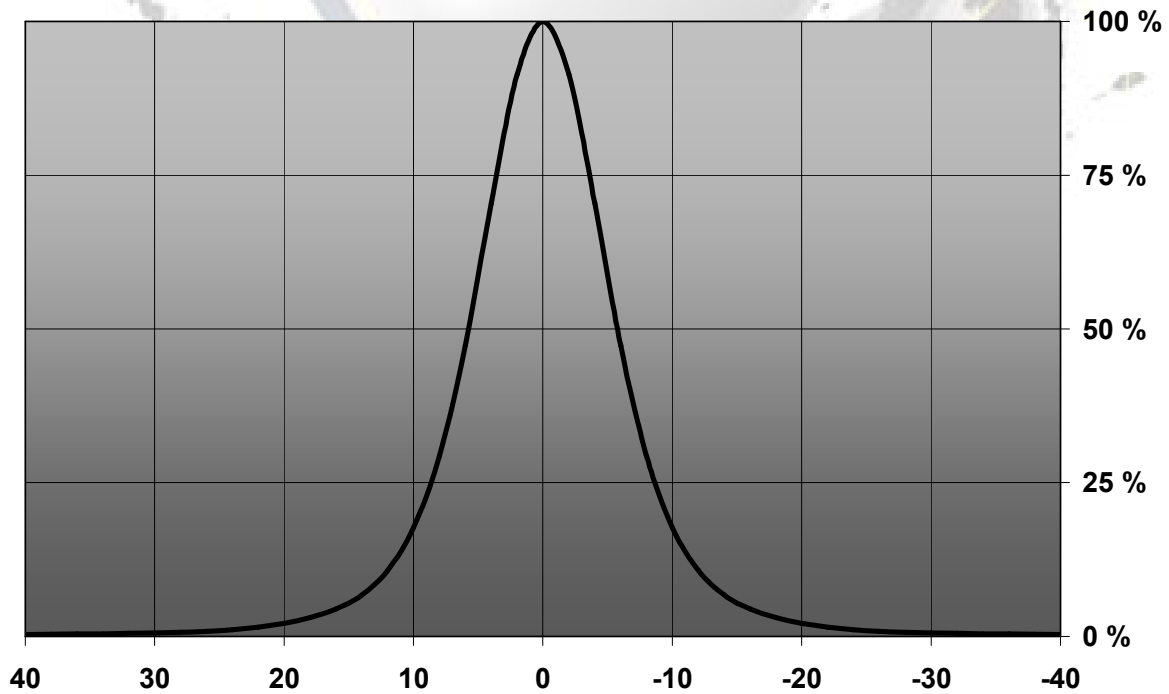
© Ledil Oy – PRELIMINARY - Subject to change without prior notice

MEASUREMENT DATA

Relative Intensity of LR1-RS

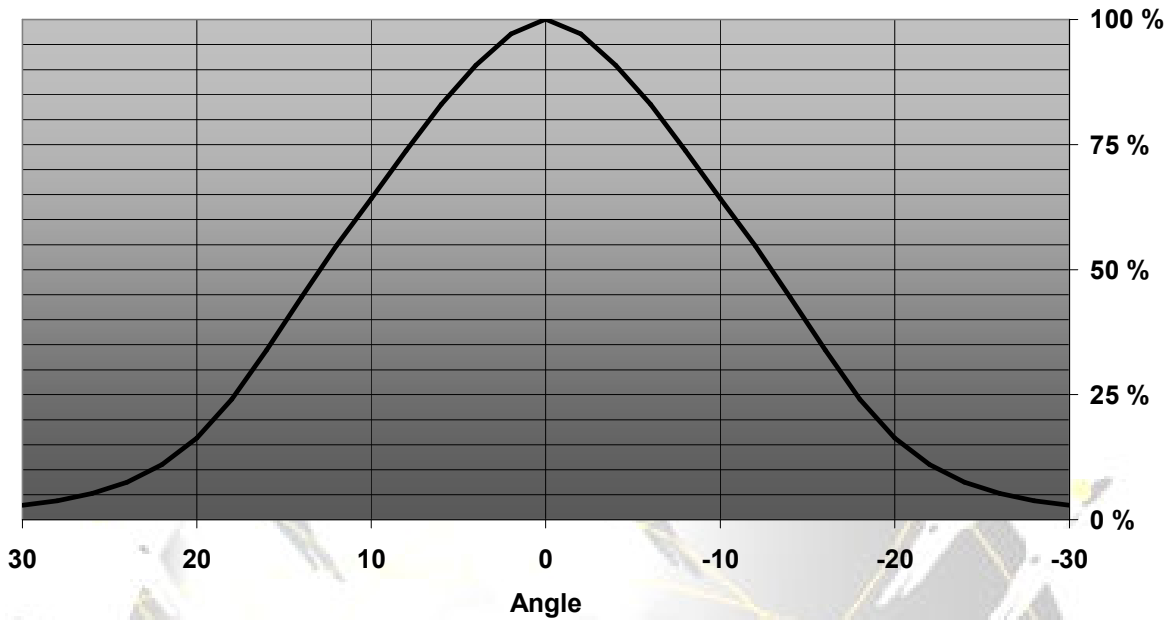


Relative Intensity of FA10806_LR1-D

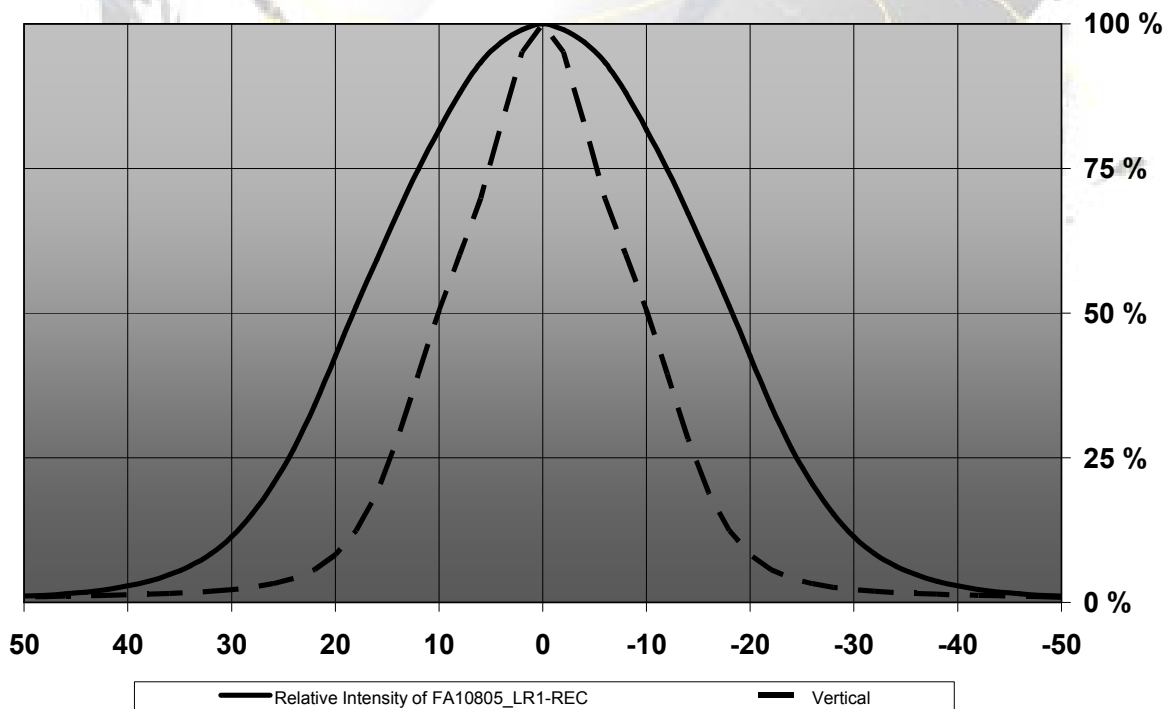


© Ledil Oy – PRELIMINARY - Subject to change without prior notice

Relative Intensity of LR1-M

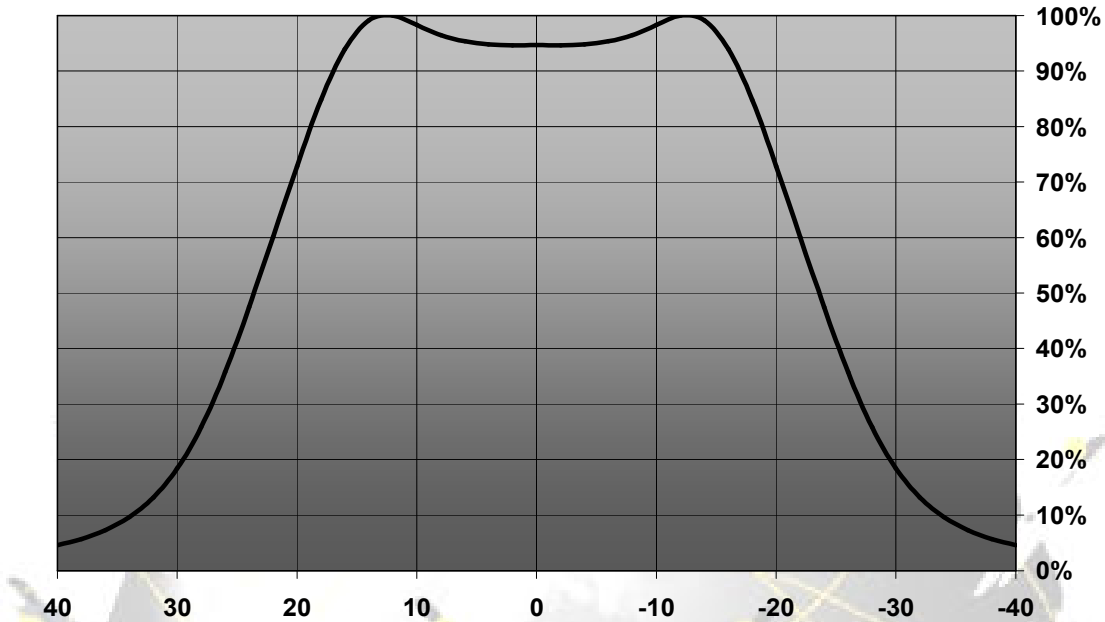


Relative Intensity of FA10805_LR1-REC



© Ledil Oy – PRELIMINARY - Subject to change without prior notice

Relative Intensity of FA10890_LR1-W



EULUMDAT & IES FILES AVAILABLE BY REQUEST

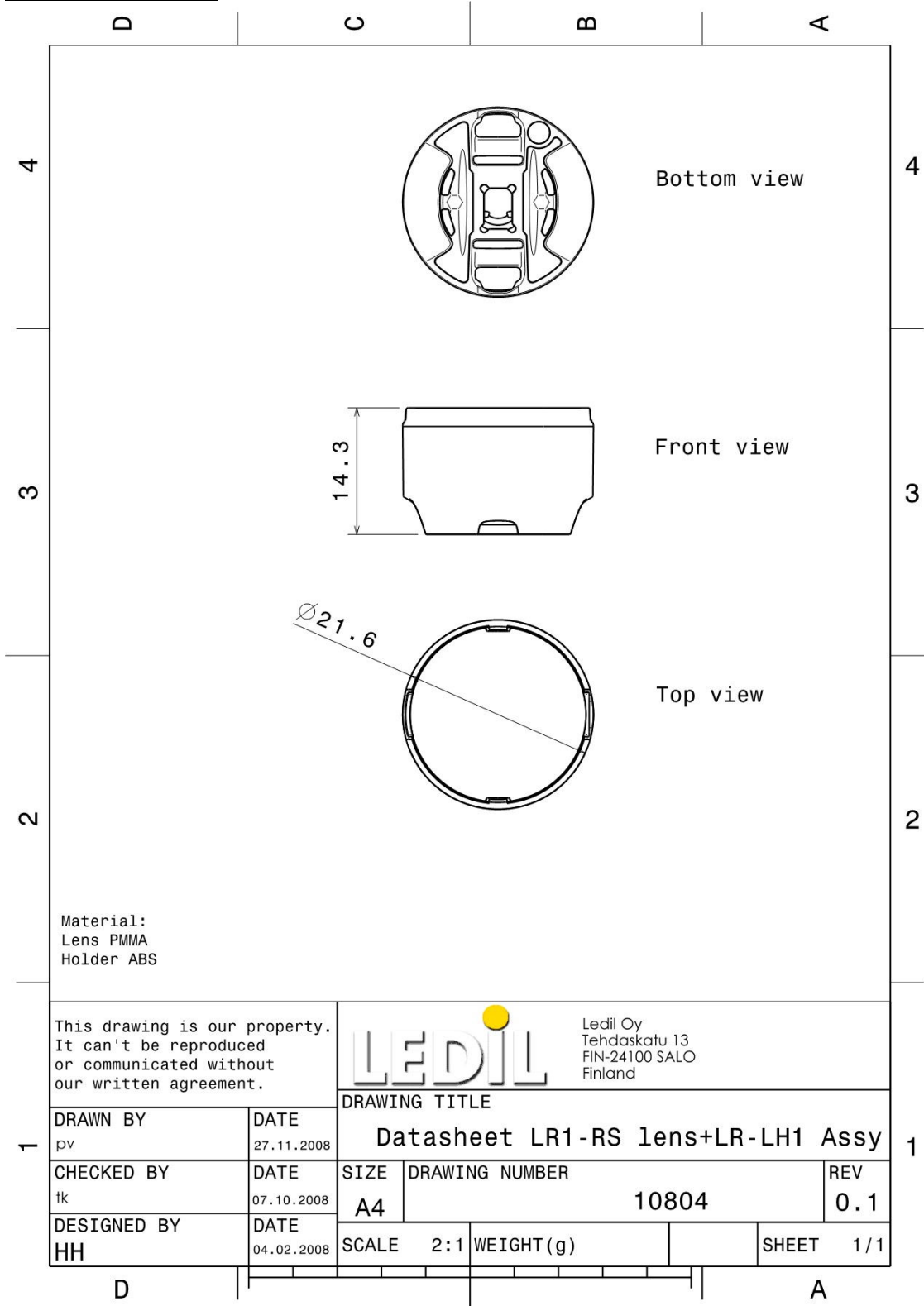
© Ledil Oy – PRELIMINARY - Subject to change without prior notice

Ledil Oy
 Tehdaskatu 13
 FIN-24100 SALO, Finland

www.ledil.com
 email: ledil@ledil.com
 FAX: +358-2-733 8001

2009-11-29

DRAWINGS



© Ledil Oy - PRELIMINARY - Subject to change without prior notice