

GT4-RE lenses for Luxeon Rebel LEDs



LUXEON



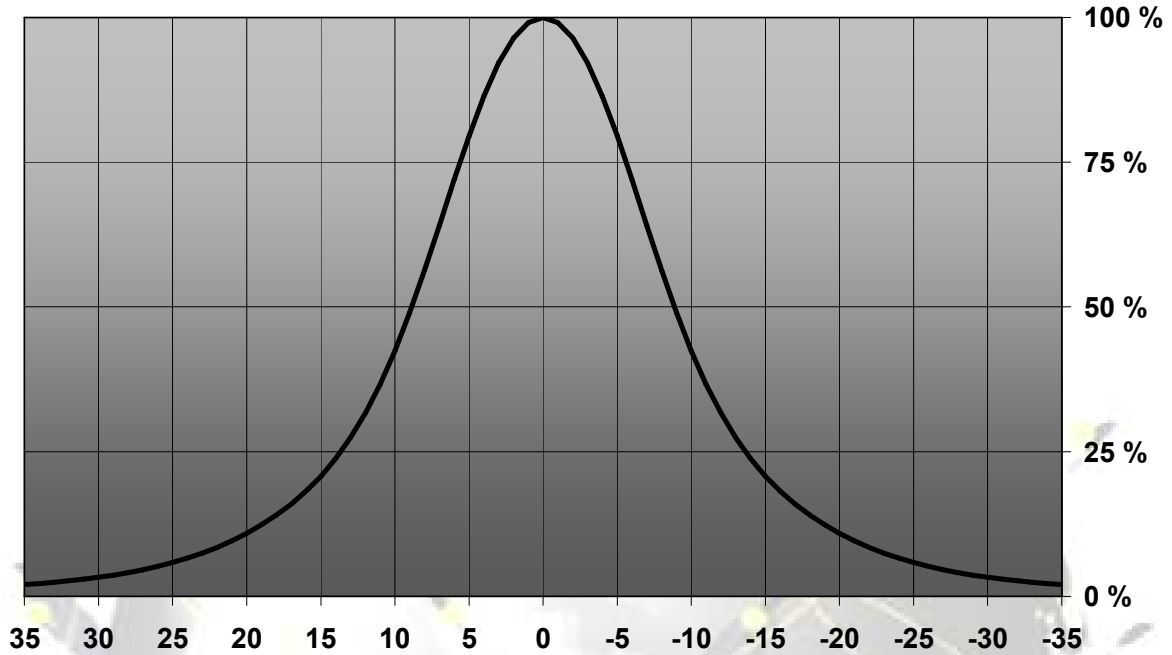
- Specially designed for Luxeon Rebel series of LEDs.
- Special care taken to make a uniform white or warm white illumination. Lenses work well with other colors, too.
- Lens material optical grade PMMA. Allows use of high current and temperature conditions
- No lens holder. Fastening to heat sink with droplets of glue.
Diameter 35 mm (MR11)
- Best available optical efficiency, up to 90%.

LENS TYPES

NAME	ORDERING CODE	FWHM
GT4-RE Smooth Spot	C10921_GT4-RE-S	±8.5°
GT4-RE Medium	C10922_GT4-RE-M	±14°
GT4-RE Wide	C10923_GT4-RE-W	±17°
GT4-RE WW	C10975_GT4-RE-WW	±24°

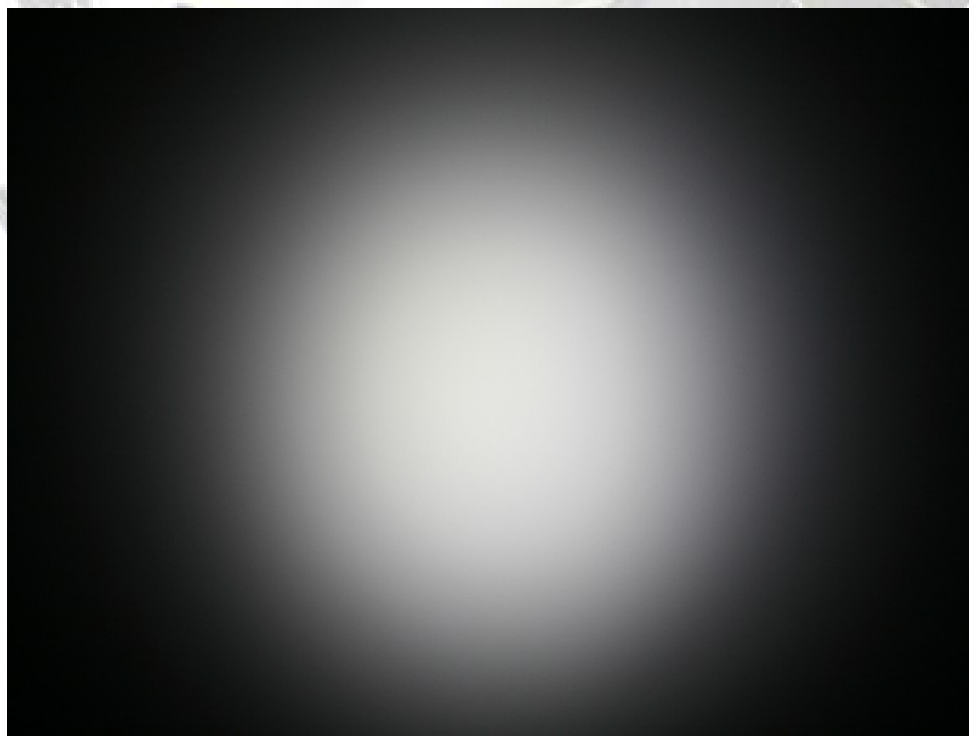
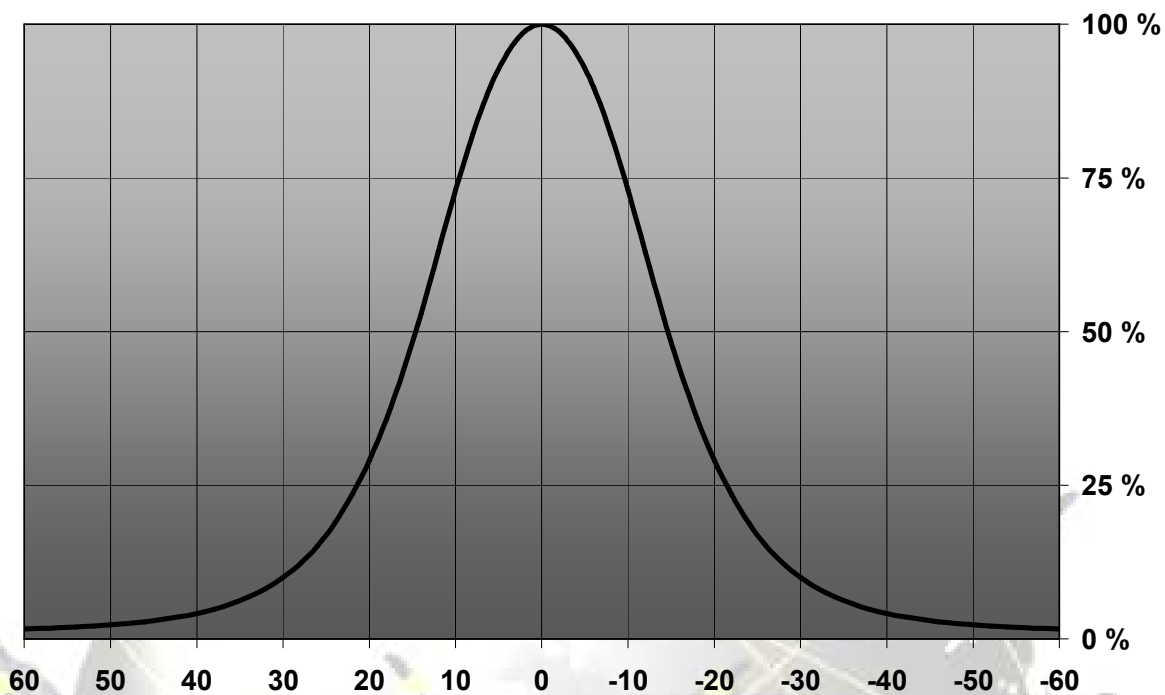
MEASUREMENT DATA

Relative Intensity of C10971_GT4-RE-S



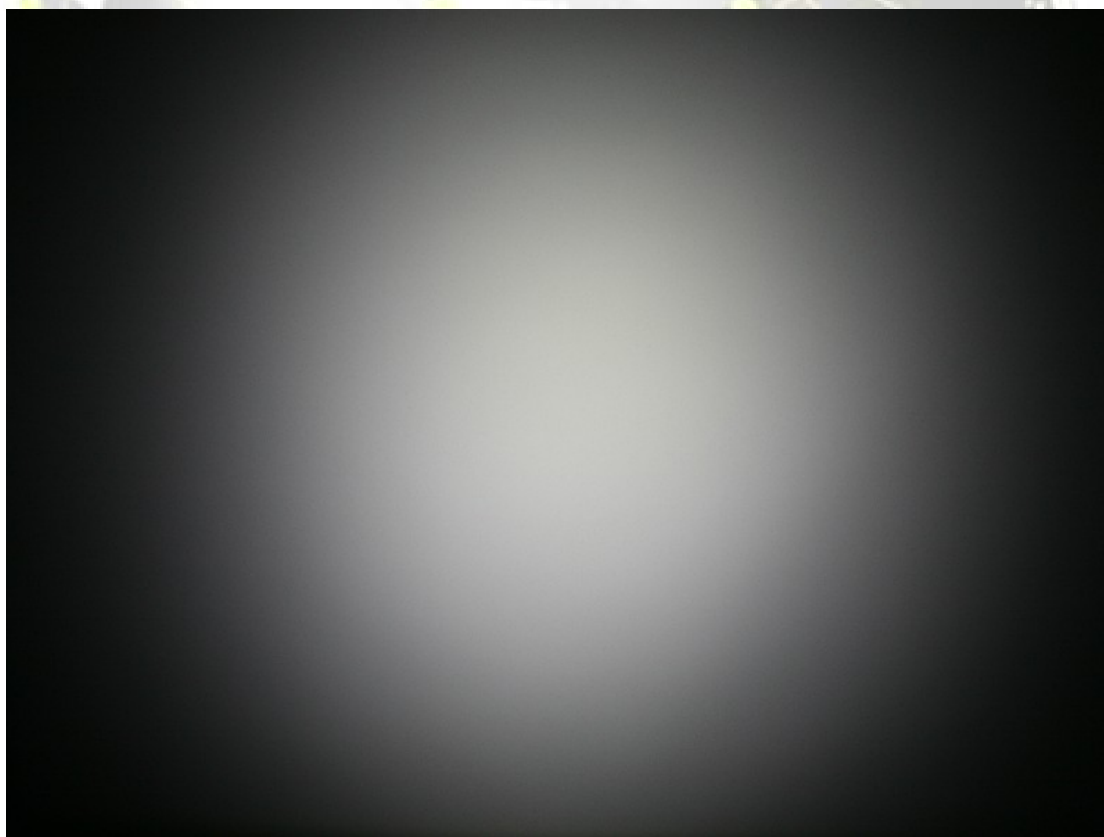
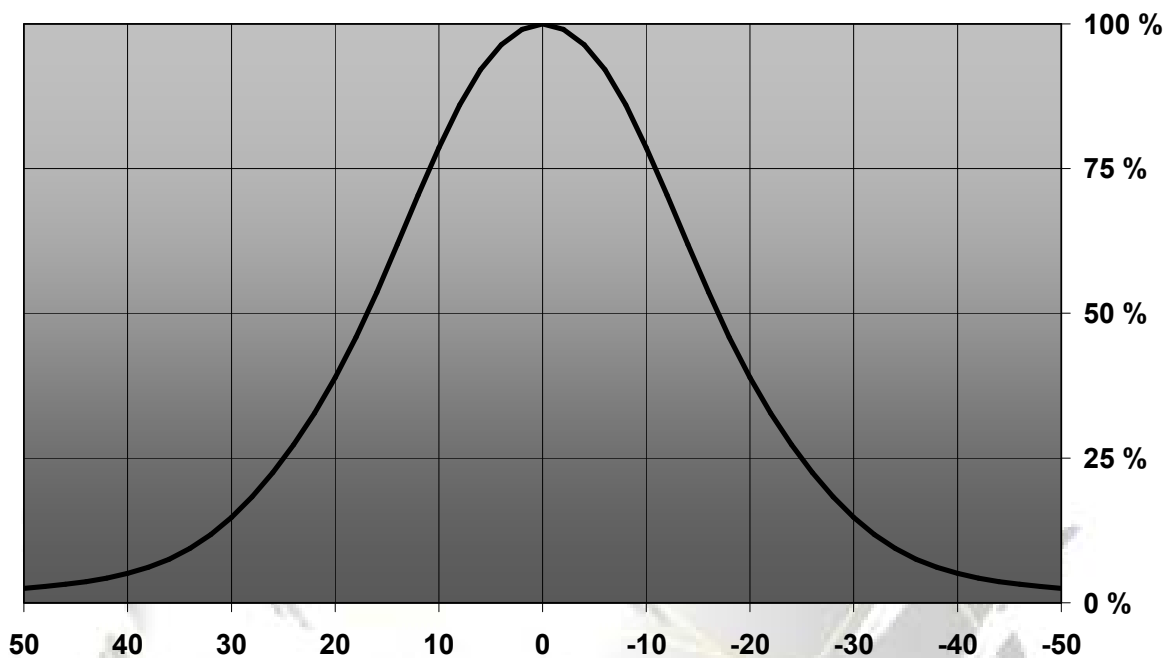
© Ledil Oy – PRELIMINARY - Subject to change without prior notice

Relative Intensity of C10972_GT4-RE-M



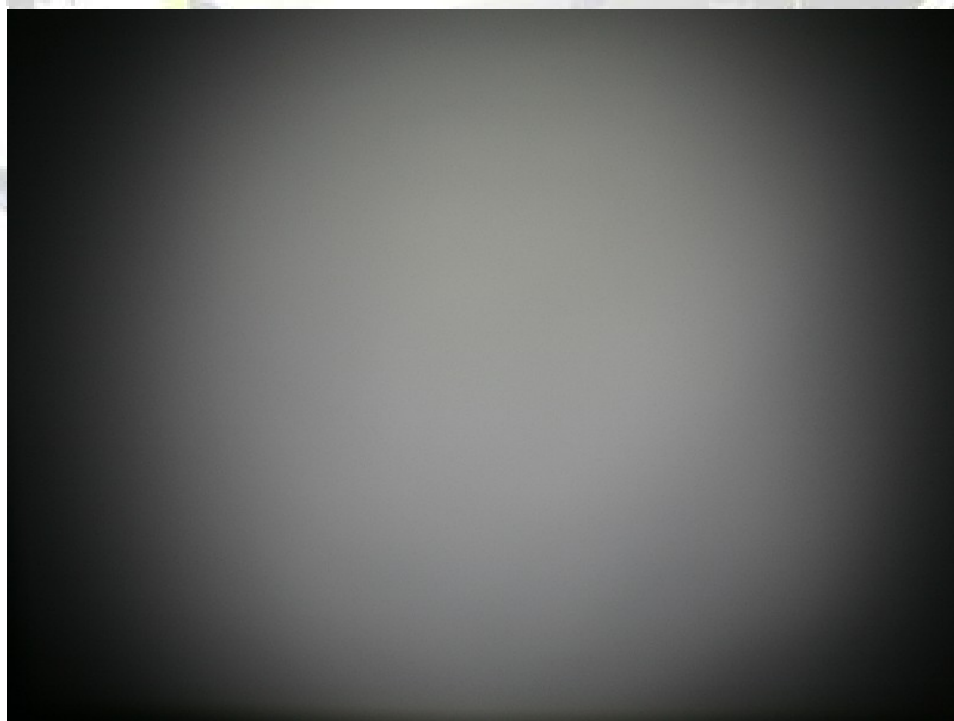
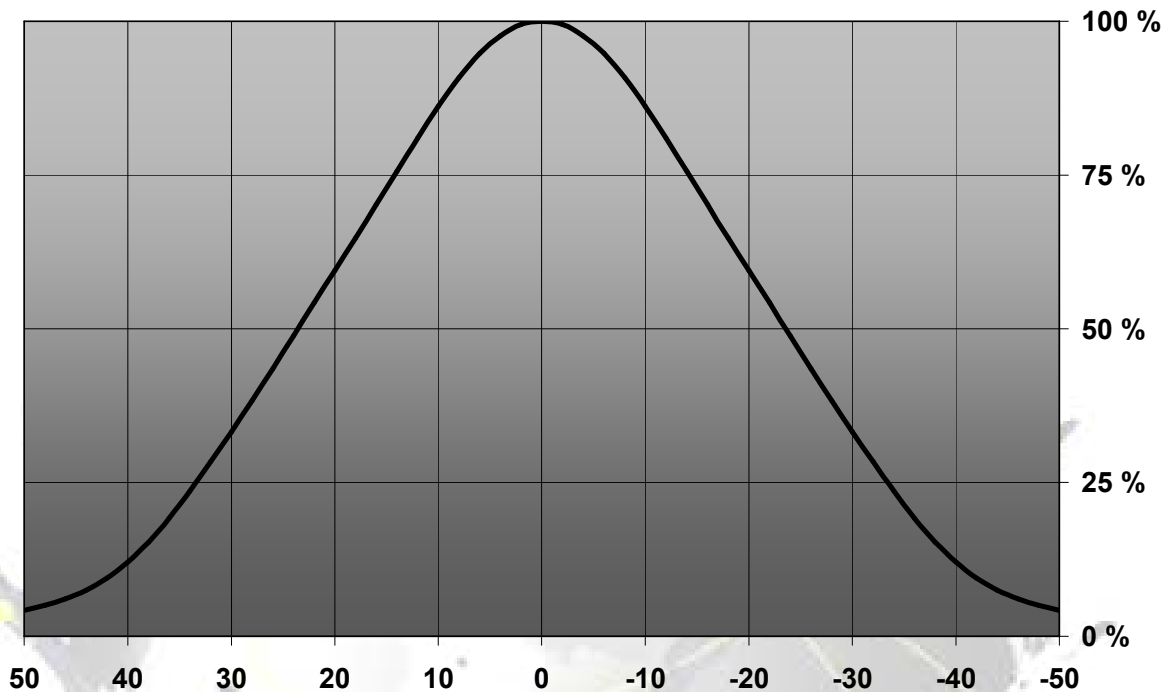
© Ledil Oy – PRELIMINARY - Subject to change without prior notice

Relative Intensity of C10973_GT4-RE-W



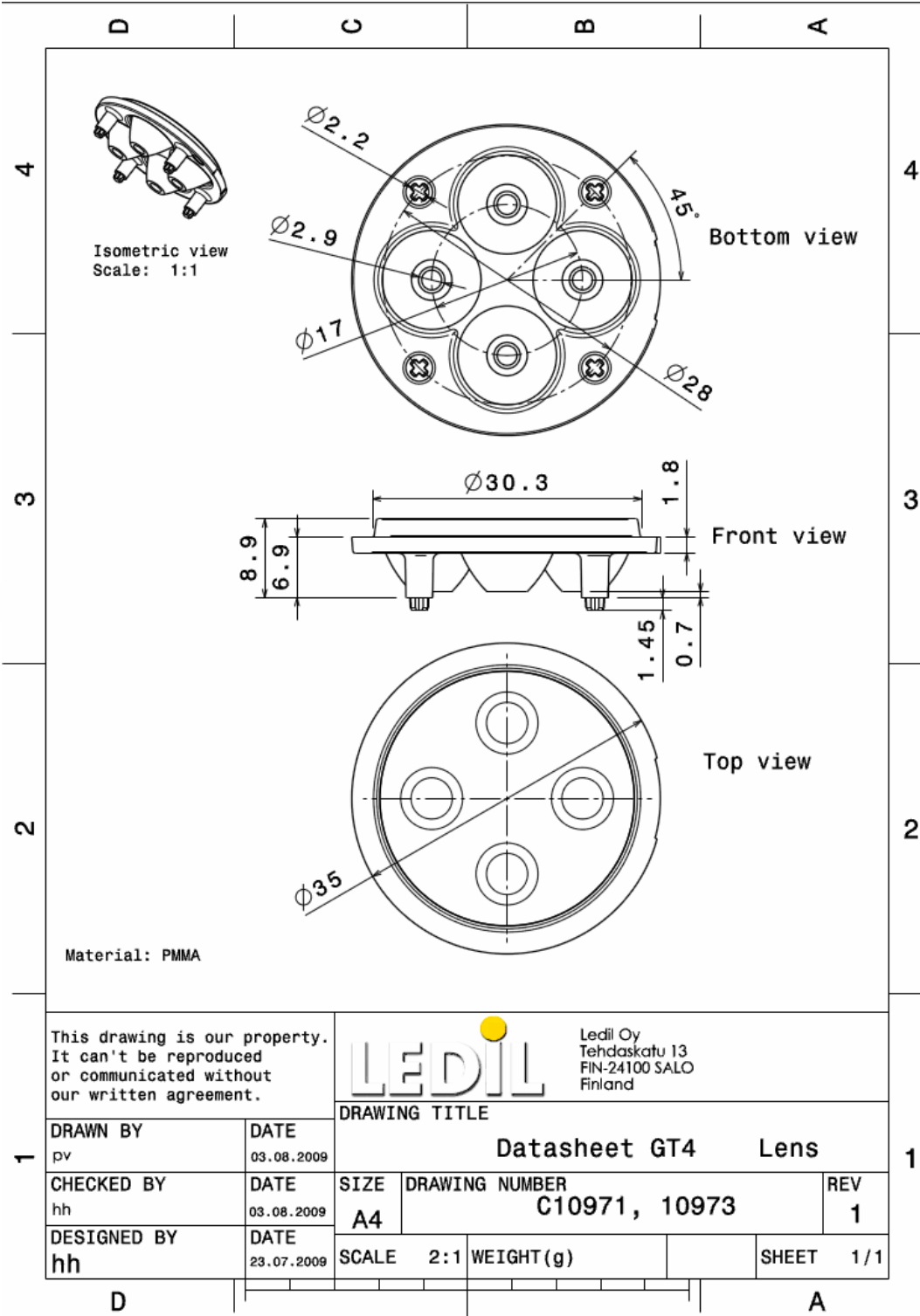
© Ledil Oy – PRELIMINARY - Subject to change without prior notice

Relative Intensity of C10974_GT4-RE-WW



© Ledil Oy – PRELIMINARY - Subject to change without prior notice

DRAWINGS



© Ledil Oy – PRELIMINARY - Subject to change without prior notice