

Lily-SST50 reflector for Luminus SST50 LEDs



LUMINUS
www.luminus.com



- Specially designed for Luminus SST50 series of LEDs.
- Special care taken to make a uniform white or warm white illumination. Lenses work well with other colors, too.
- Lens material optical grade metallized PC. Allows use of high current and temperature conditions (130°C/220°F).
- Best available optical efficiency over 90%.
- Compact dimensions, for more information please check drawing at the bottom page.

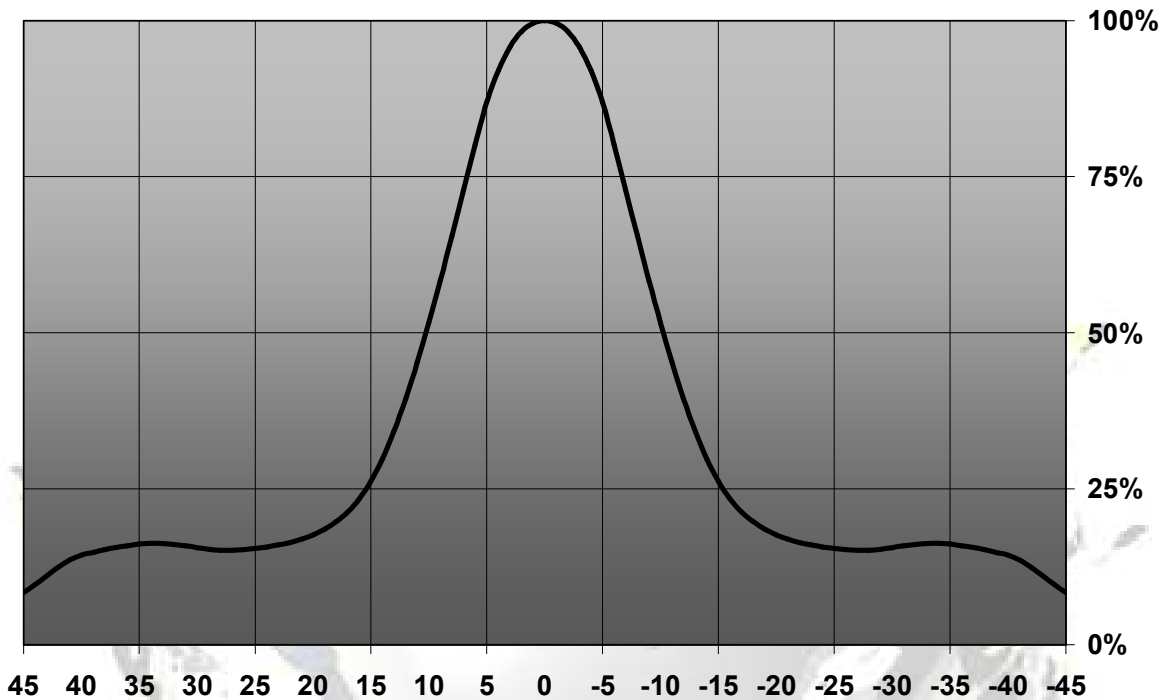
LENS TYPES

NAME	ORDERING CODE	FWHM Angle
Lily-SST50 Spot	C10977 Lily-SST50-S	±10°
Lily-SST50 Medium	C10978 Lily-SST50-M	±15°
Lily-SST50 Wide	C10979 Lily-SST50-W	±22.5°

© Ledil Oy – PRELIMINARY - Subject to change without prior notice

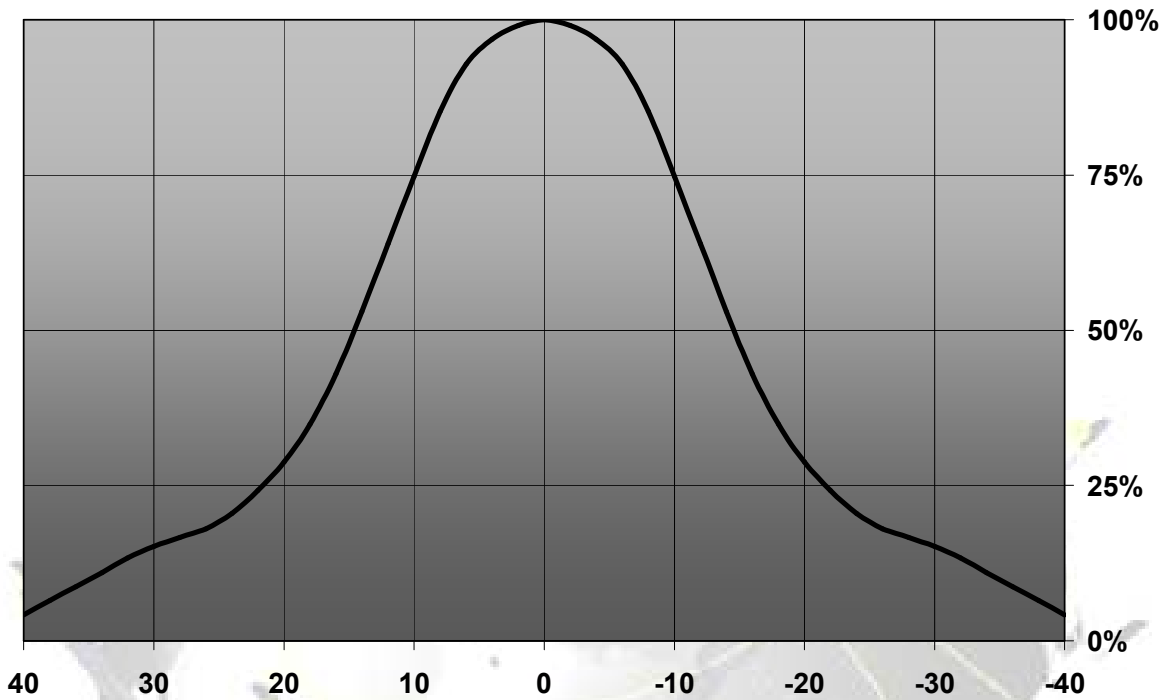
MEASUREMENT DATA

Relative Intensity of C10977_Lily-SST50-S



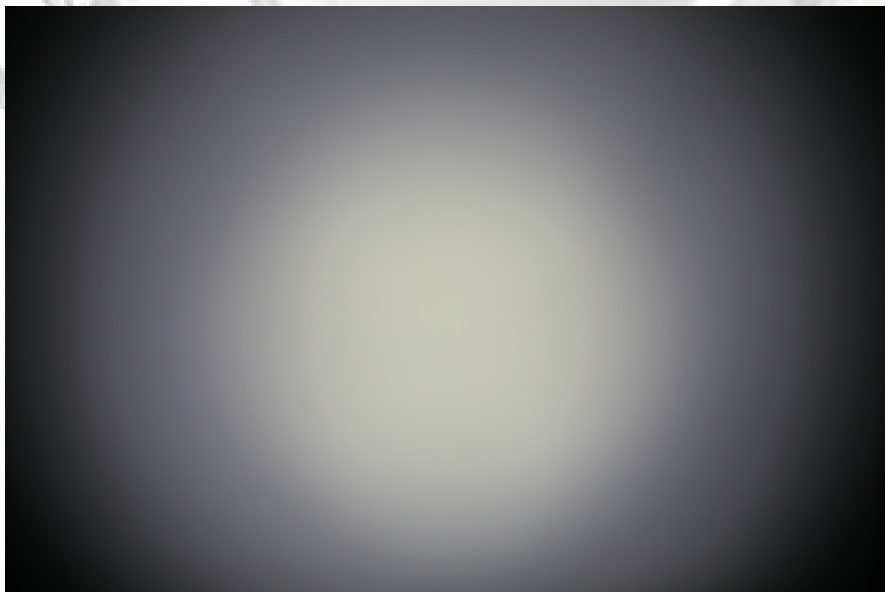
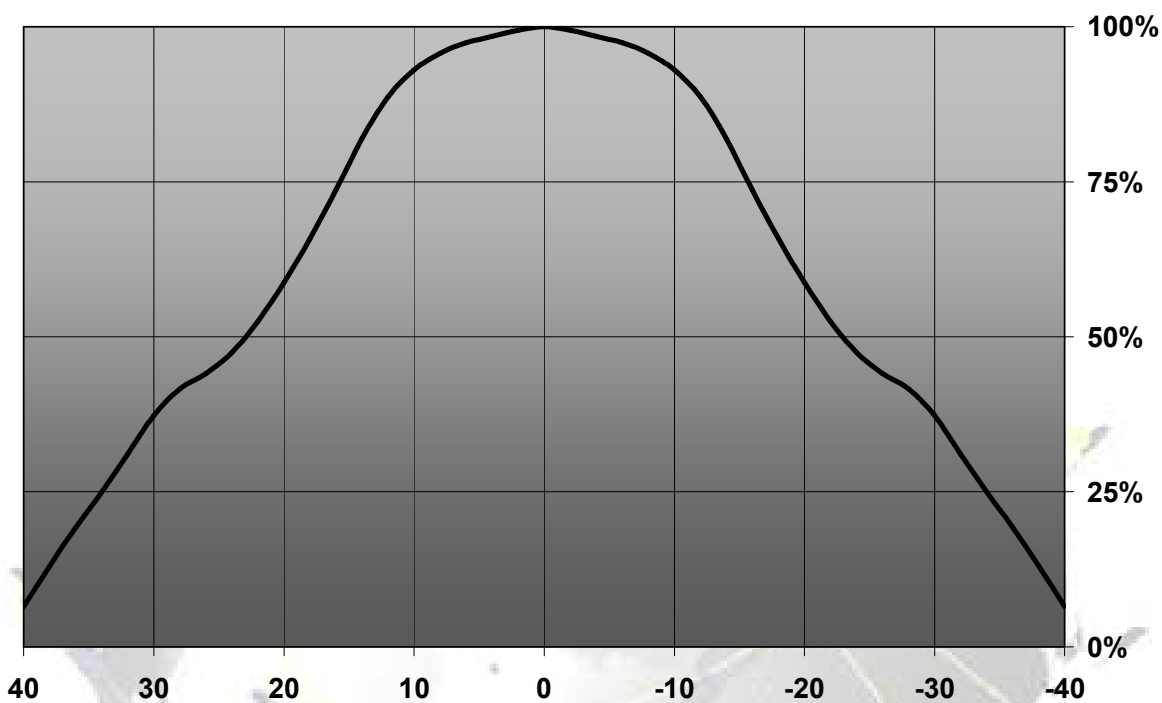
© Ledil Oy – PRELIMINARY - Subject to change without prior notice

Relative Intensity of C10978_Lily-SST50-M



© Ledil Oy – PRELIMINARY - Subject to change without prior notice

Relative Intensity of C10979_Lily-SST50-W



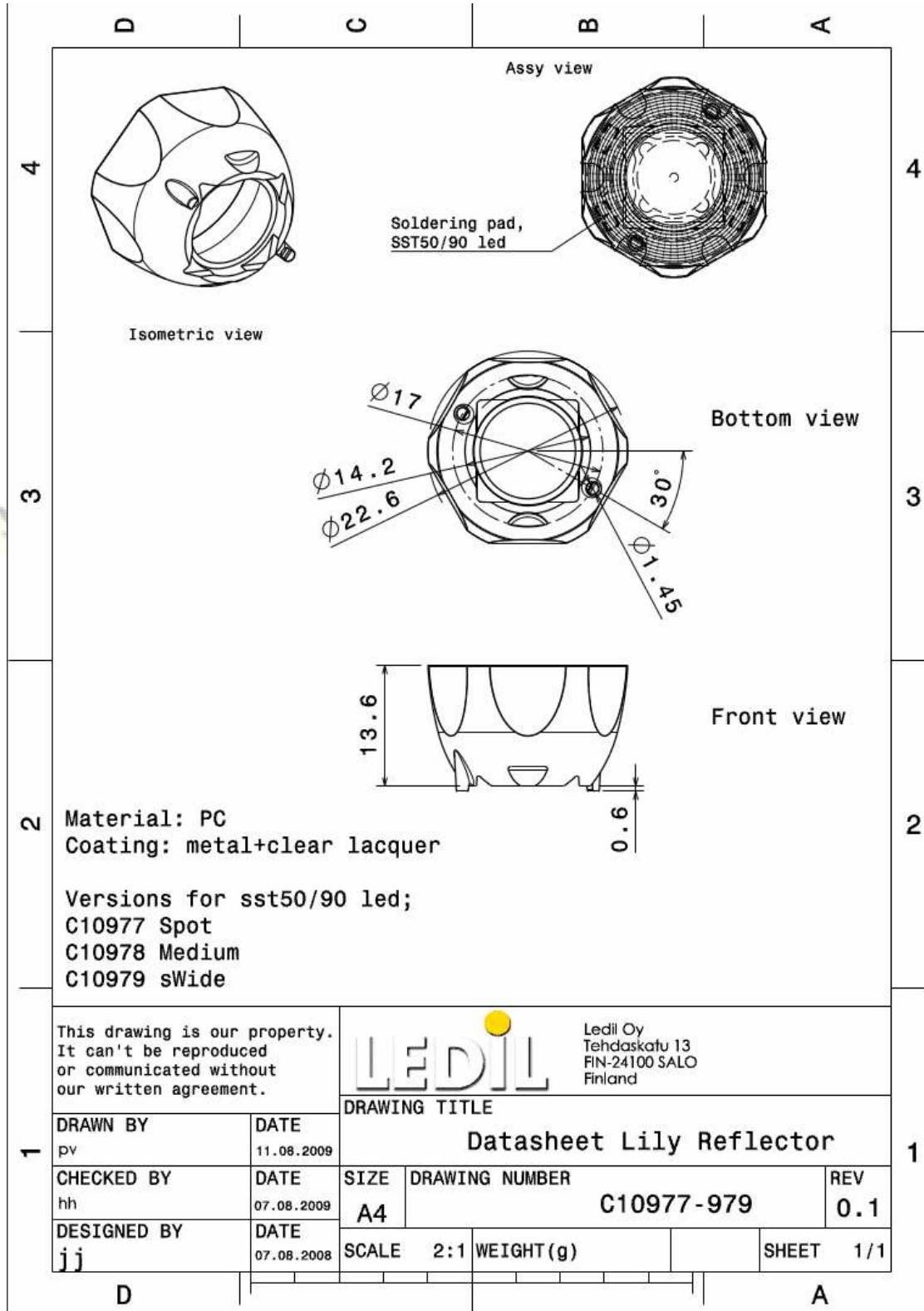
© Ledil Oy – PRELIMINARY - Subject to change without prior notice

Ledil Oy
Tehdaskatu 13
FIN-24100 SALO, Finland

www.ledil.com
email: ledil@ledil.com
FAX: +358-2-733 8001

2009-10-07

DRAWINGS



© Ledil Oy - PRELIMINARY - Subject to change without prior notice