

Boomerang, reflector for LedEngin 5w & 10w LEDs



LedEngin, Inc.
www.ledengin.com

- Specially designed for LedEngin 10w series of LEDs, but works also fine with LedEngin 5w LEDs.
- Special care taken to make a uniform white or warm white illumination. Lenses work well with other colors, too.
- Lens material optical grade metallized ABS. Allows use of high current and temperature conditions
- Best available optical efficiency, up to 90% using LedEngin 10w LEDs and using LedEngin 5w LEDs 89%.

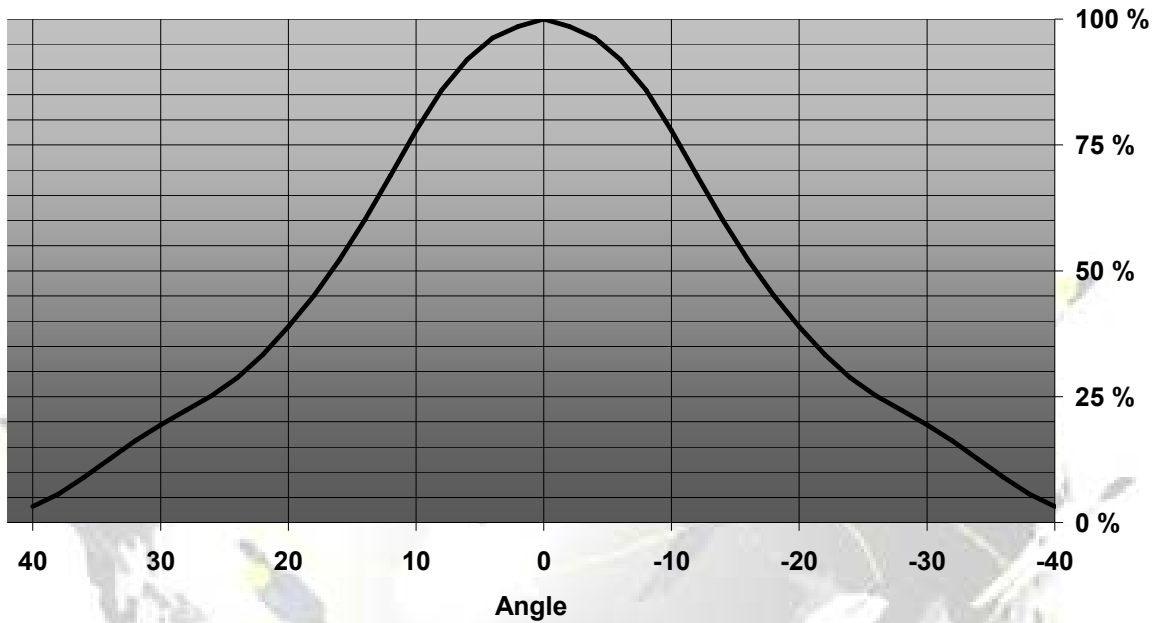
LENS TYPES

NAME	ORDERING CODE	FWHM Angle
BOOMERANG (with 10w LED)	C10437_Boomerang-reflector_LE10	±16° x ±16°
BOOMERANG (with 5w LED)	C10437_Boomerang-reflector_LE5	±14° x ±12°

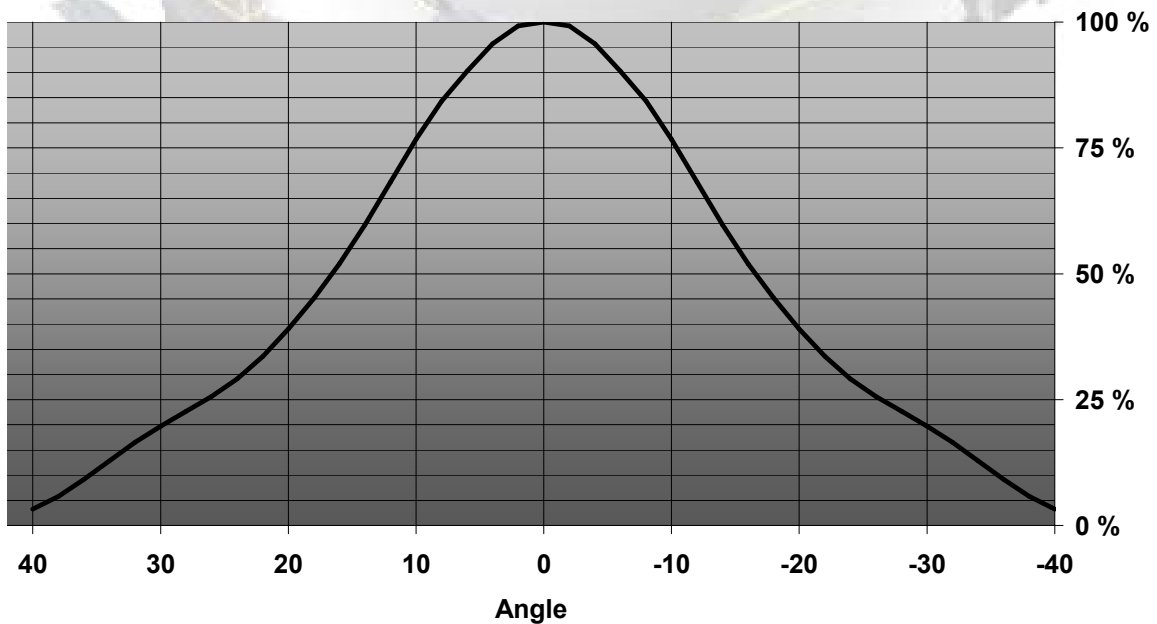
© Ledil Oy – PRELIMINARY - Subject to change without prior notice

MEASUREMENT DATA

Boomerang reflector with LedEngin 10W LED (horizontal)

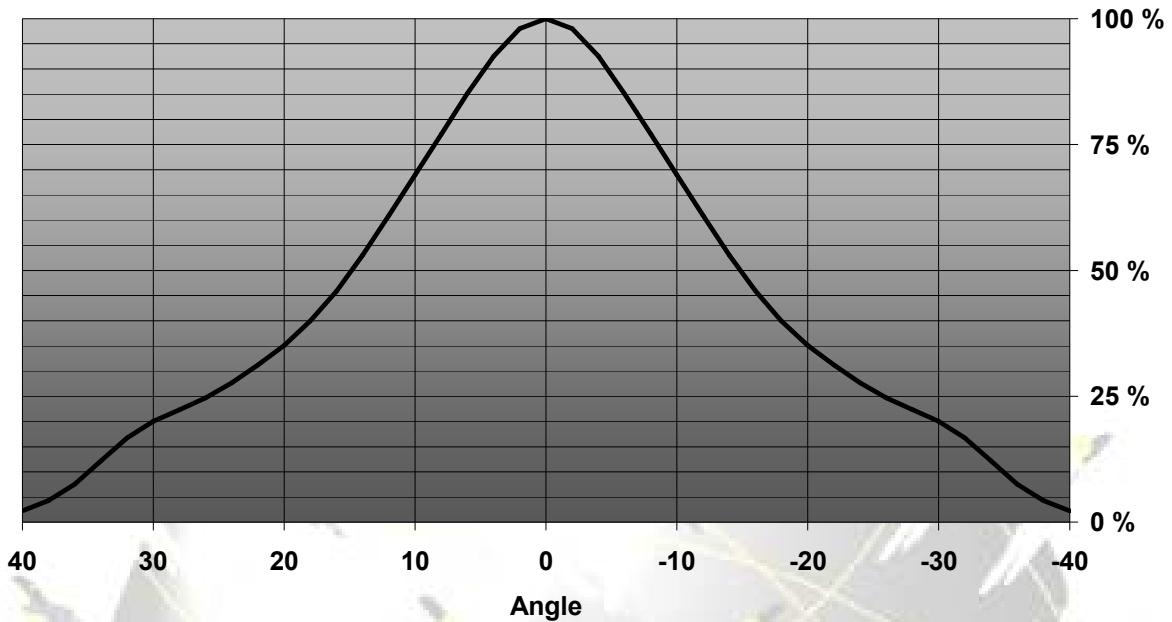


Boomerang reflector with LedEngin 10W LED (vertical)

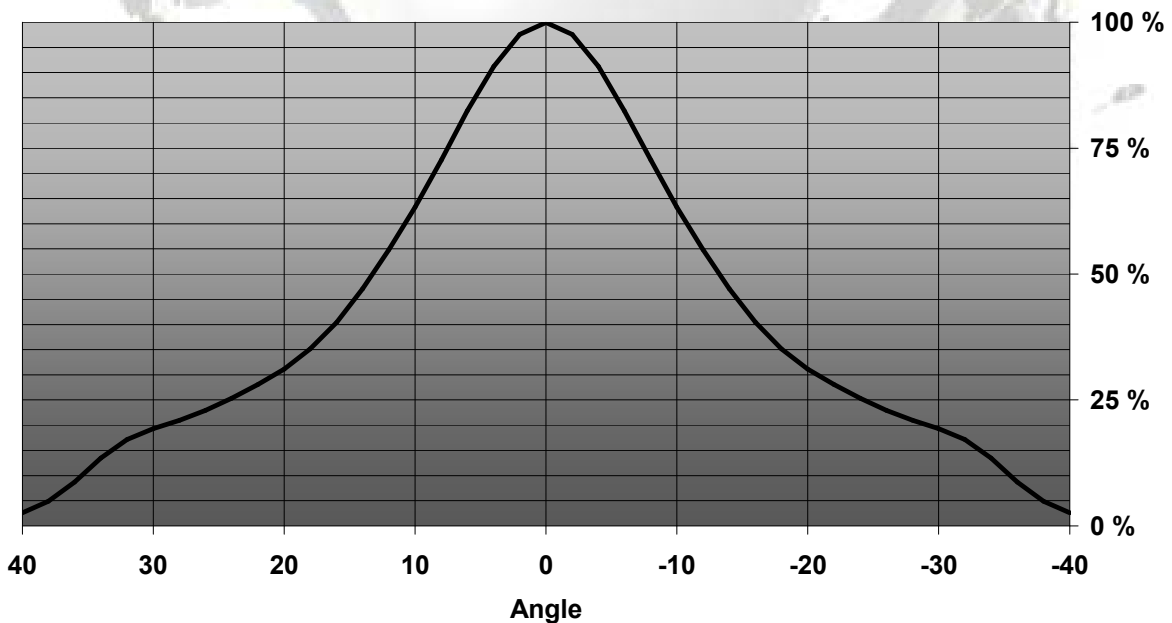


© Ledil Oy – PRELIMINARY - Subject to change without prior notice

Relative Intensity of Boomerang (LedEngin 5w horizontal)



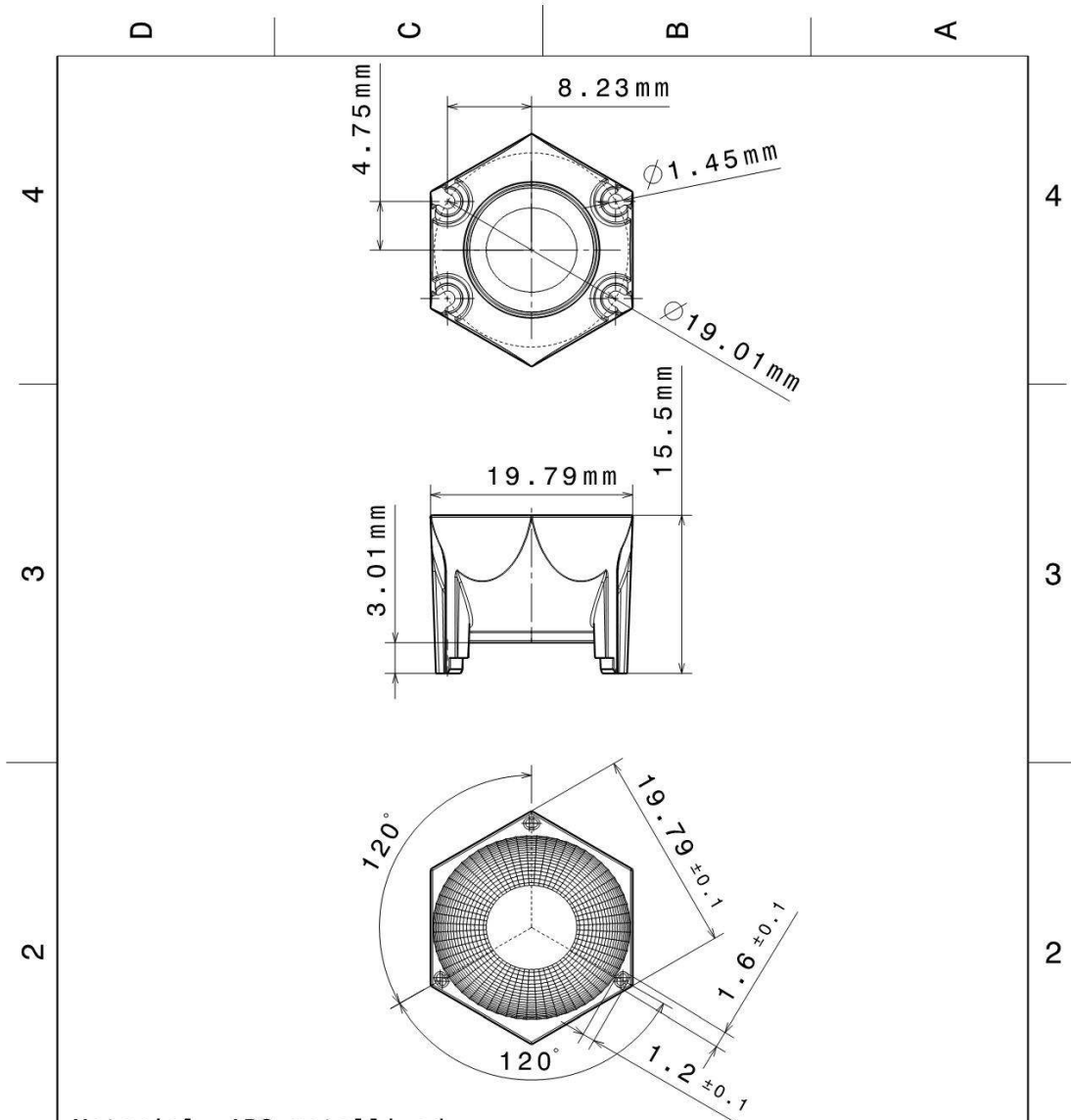
Relative Intensity of Boomerang (LedEngin 5w vertical)



EULUMDAT & IES FILES AVAILABLE BY REQUEST

© Ledil Oy – PRELIMINARY - Subject to change without prior notice

DRAWINGS



Material: ABS metallized

This drawing is our property.
It can't be reproduced
or communicated without
our written agreement.



Ledil Oy
Tehdaskatu 13
FIN-24100 SALO
Finland

DRAWING TITLE		Boomerang-reflector		
DRAWN BY RM	DATE 21.11.2007	SIZE A4	DRAWING NUMBER 10437	REV 0.1
CHECKED BY HH	DATE 21.11.2007	SCALE 1:1	WEIGHT (g)	SHEET 1/1
DESIGNED BY HH	DATE 21.11.2007			



© Ledil Oy – PRELIMINARY - Subject to change without prior notice

Ledil Oy
Tehdaskatu 13
FIN-24100 SALO, Finland

www.ledil.com
email: ledil@ledil.com
FAX: +358-2-733 8001

2009-12-01