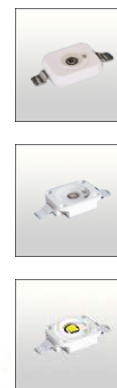


LO2 LENSES FOR OSRAM-OS DRAGON/DRAGON+ LEDs



- Specially designed for Osram-os Golden Dragon+ series of LEDs, but works well with Platinum Dragon LEDs too.
- Special care taken to make a uniform white or warm white illumination. Lenses work well with other colors, too.
- Lens material optical grade PMMA. Allows use of high current and temperature conditions
- Best available optical efficiency, more than 90%, with an extremely good cutoff of light
- Integrated holder. Fastening to heat sink with a PU foam adhesive tape of automotive grade

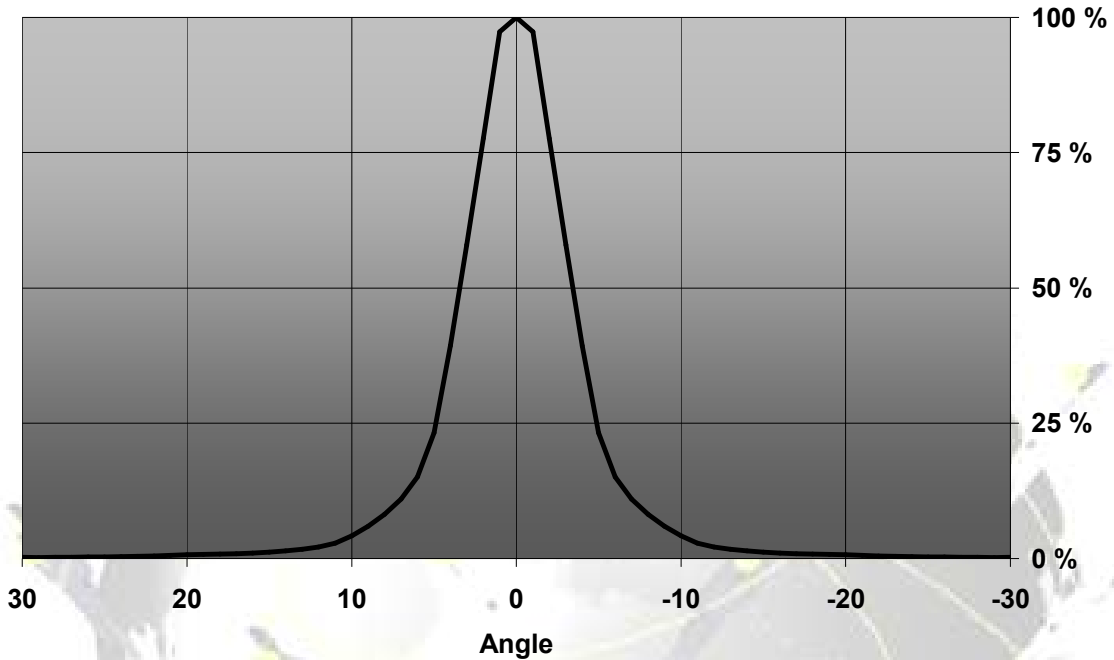
LENS TYPES

| NAME | ORDERING CODE | FWHM Angle |
|-----------------|------------------|---------------|
| LO2 REAL SPOT | FA10751_LO2-RS | ±3.5° |
| LO2 DIFFUSER | FA10753_LO2-D | ±5.5° |
| LO2 MEDIUM | FA10750_LO2-M | ±13° |
| LO2 OVAL | FA11135_LO2-O-90 | ±20.5° x ±6° |
| LO2 RECTANGULAR | FA10752_LO2-REC | ±19° x ±11.8° |
| LO2 WIDE | FA11136_LO2-W | ±22° |

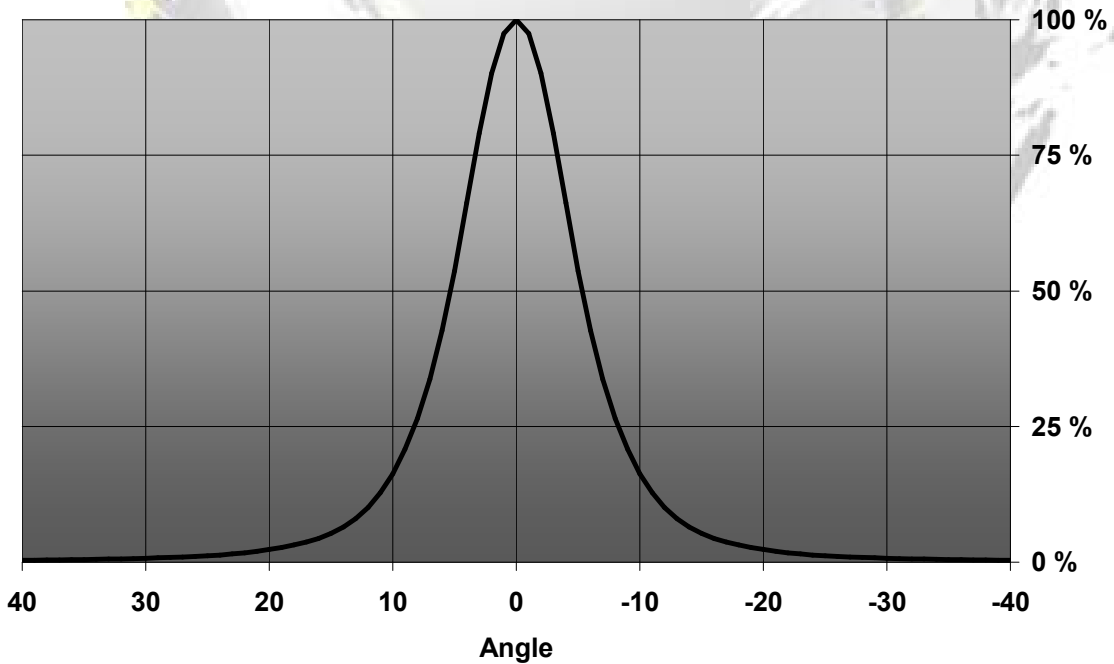
© Ledil Oy – PRELIMINARY - Subject to change without prior notice

MEASUREMENT DATA

Relative Intensity of LO2-RS

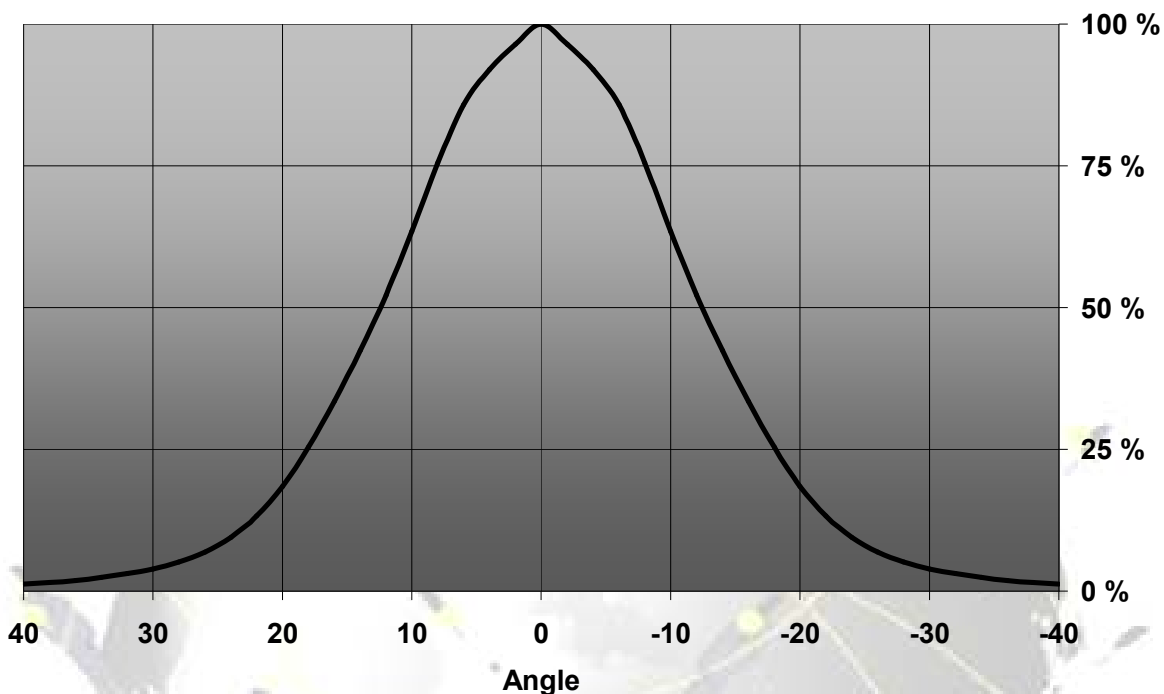


Relative Intensity of LO2-D

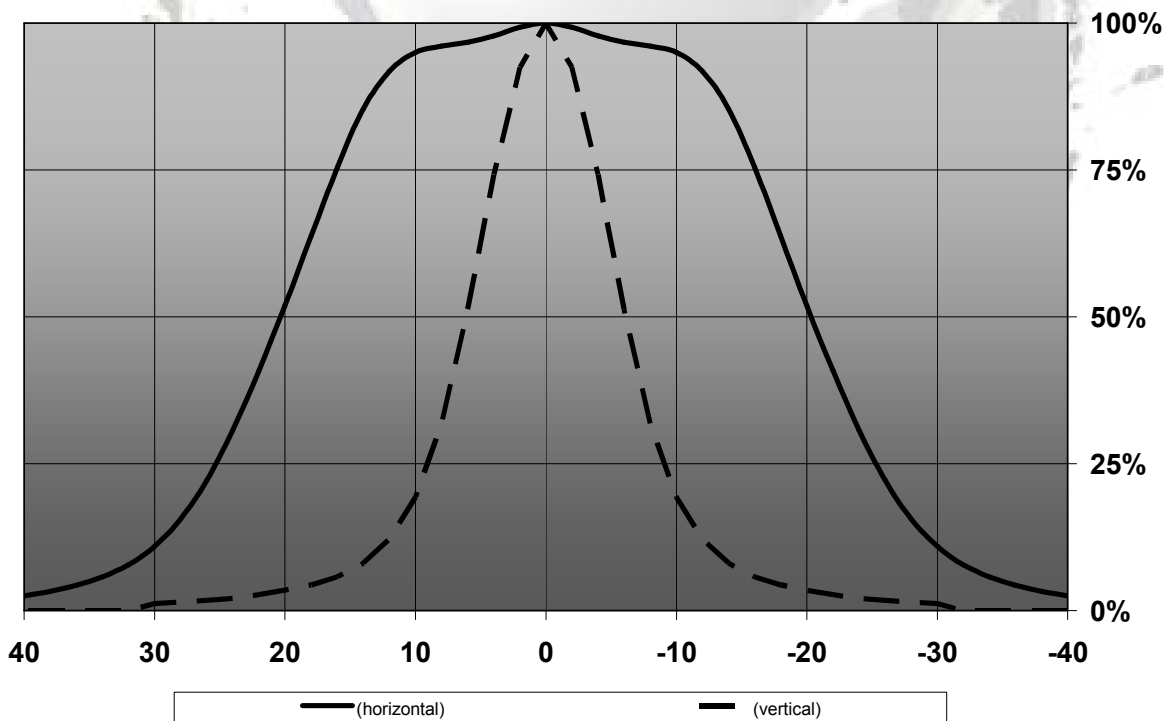


© Ledil Oy – PRELIMINARY - Subject to change without prior notice

Relative Intensity of LO2-M

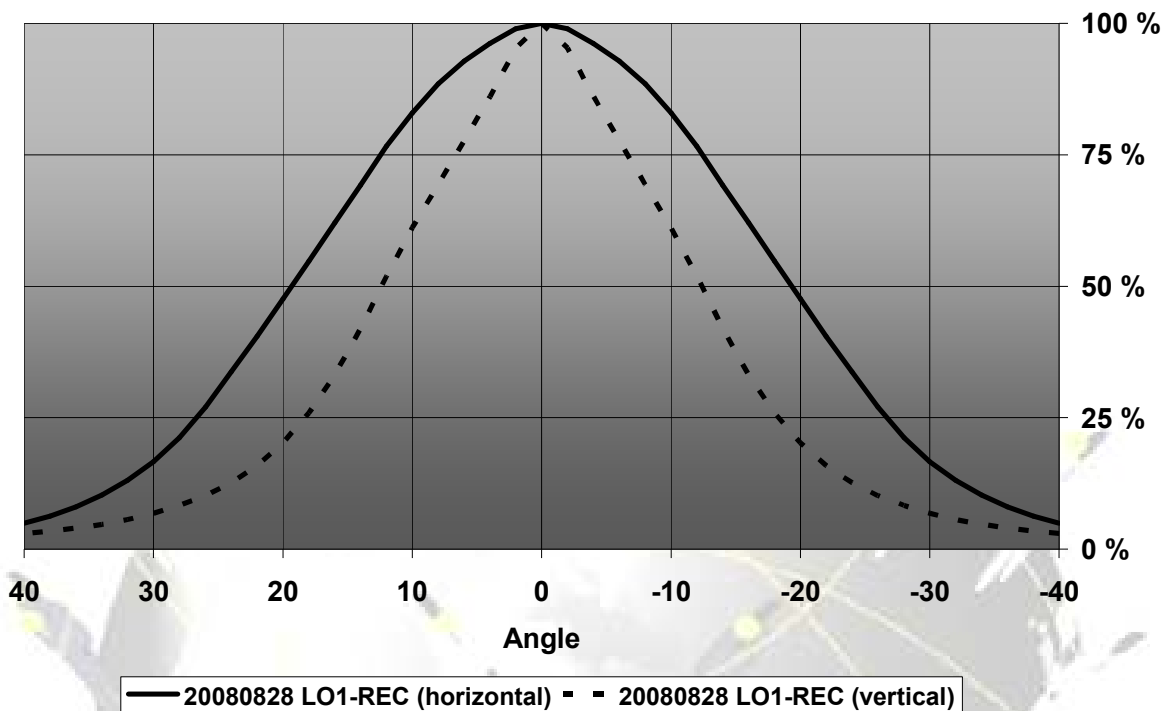


Relative Intensity of FA11135_LO2-O-90

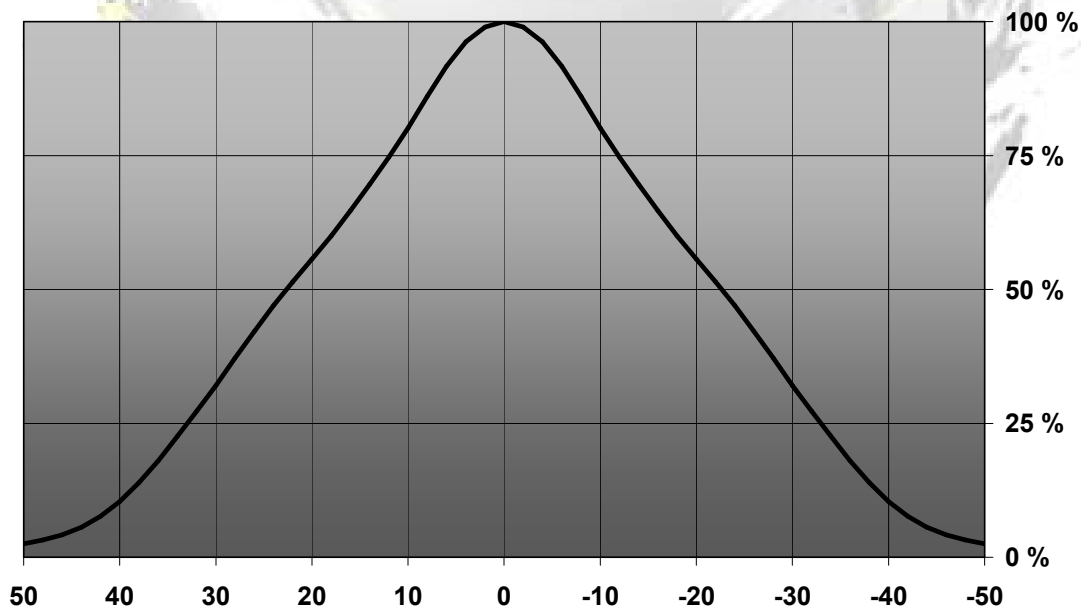


© Ledil Oy - PRELIMINARY - Subject to change without prior notice

Relative Intensity of LO2-REC

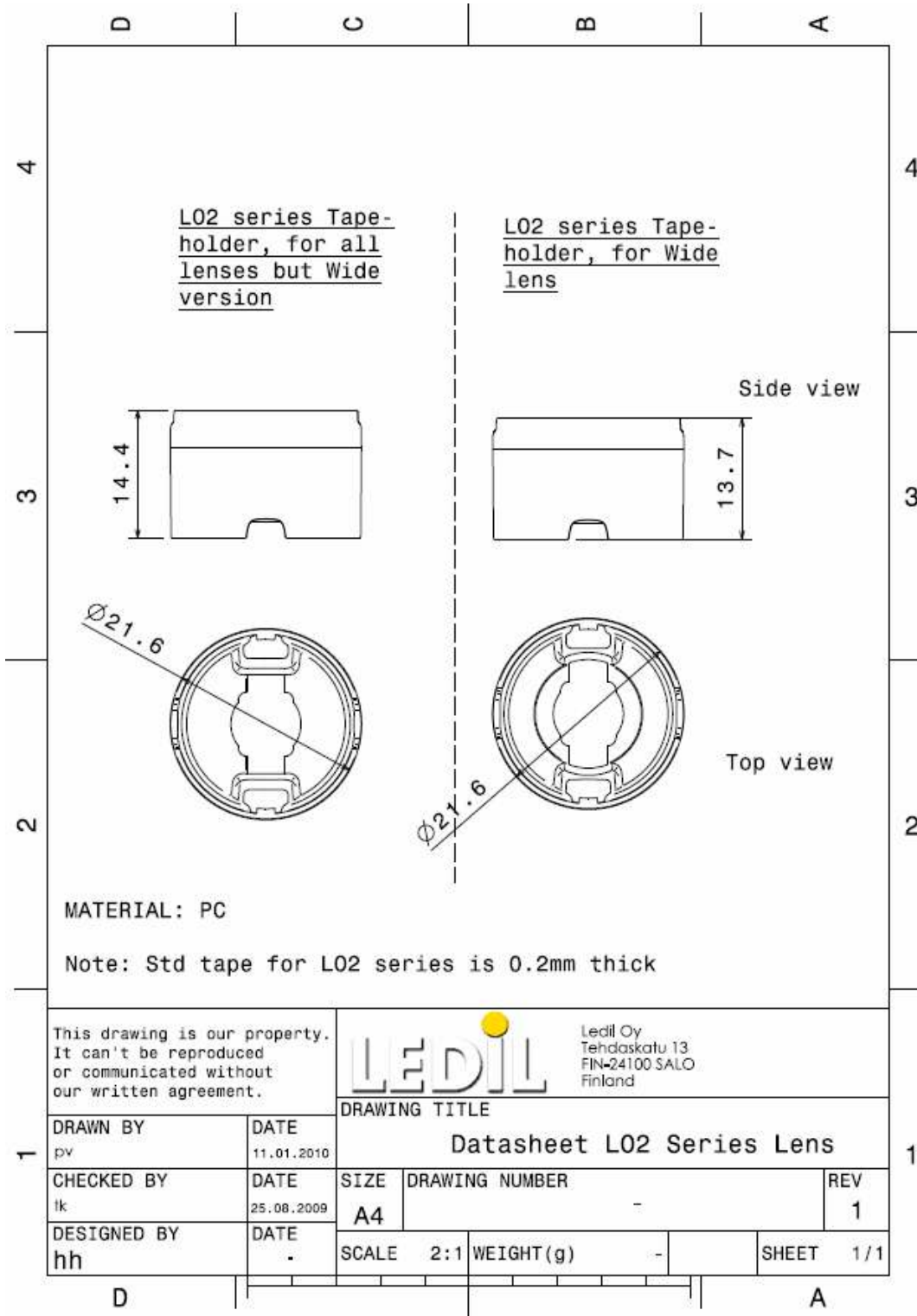


Relative Intensity of CA11136_LO2-W



© Ledil Oy – PRELIMINARY - Subject to change without prior notice

DRAWINGS



© Ledil Oy - PRELIMINARY - Subject to change without prior notice