

TINA2-N153 lenses for Nichia 153 LEDs



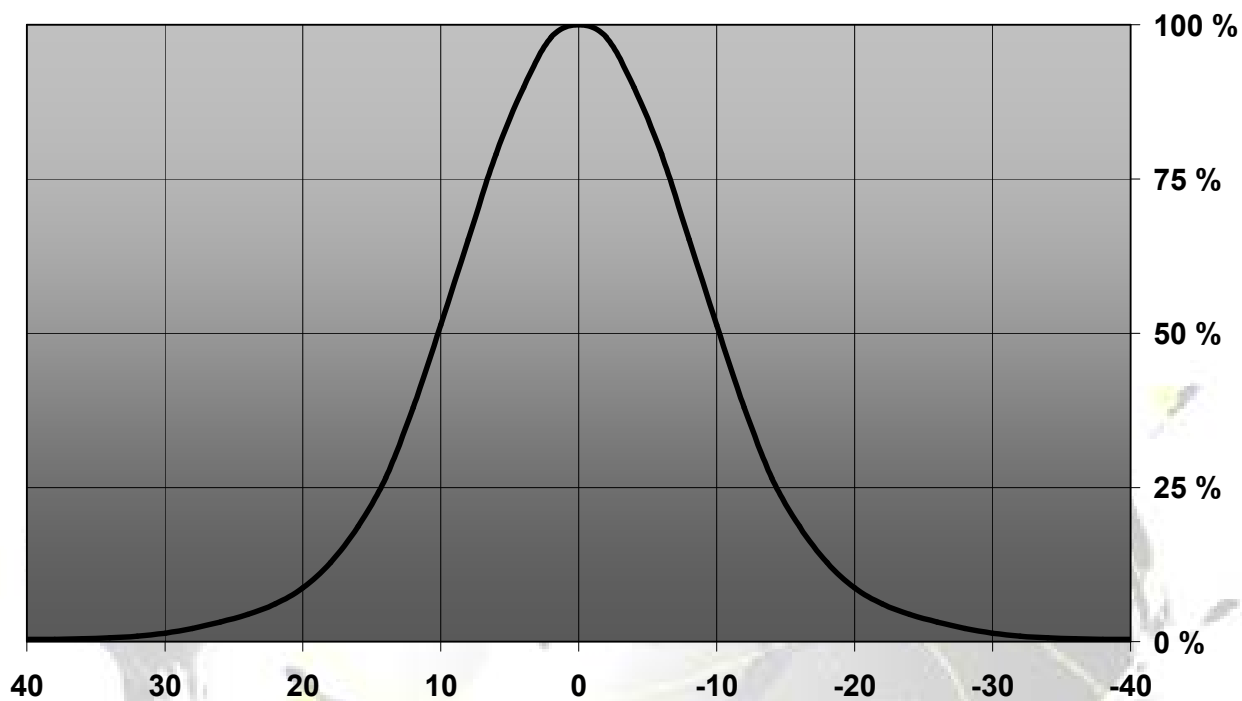
- Specially designed for Nichia 153 series of LEDs
- Special care taken to make a uniform white or warm white illumination.
- Lens material optical grade PMMA with high UV and temperature resistance (105°C/220°F).
- Integrated holder. Fastening to heat sink with a PU foam adhesive tape of automotive grade
- Please check fastening details from this link:
(http://www.ledil.com/datasheets/DataSheet_TAPE.pdf)
- Compact dimensions 16.1 x 10.4 mm.

LENS TYPES

NAME	ORDERING CODE	FWHM Angle
TINA2-N153 REAL SPOT	CA11511_Tina2-RS-N153	±10°
TINA2-N153 DIFFUSER	CA11512_Tina2-D-N153	±11°
TINA2-N153 MEDIUM	CA11513_Tina2-M-N153	±16°
TINA2-N153 OVAL	CA11514_Tina2-W-N153	±22°

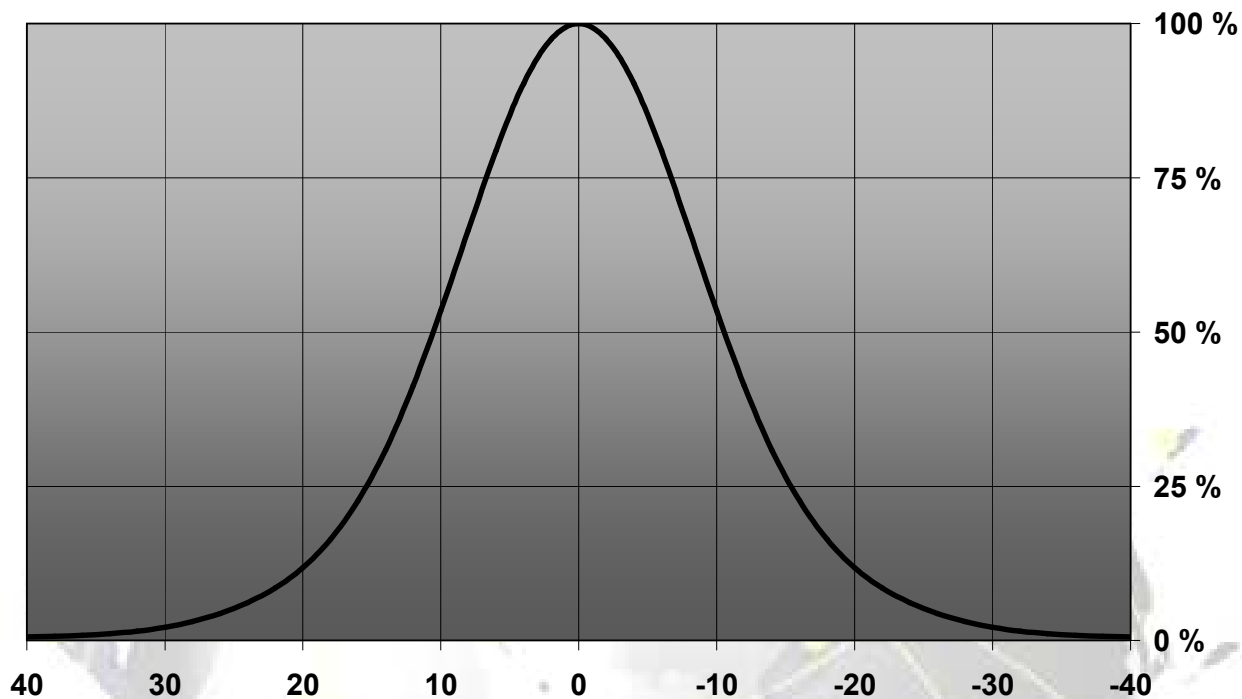
MEASUREMENTS

Relative intensity of CA11511_Tina2-RS-N153

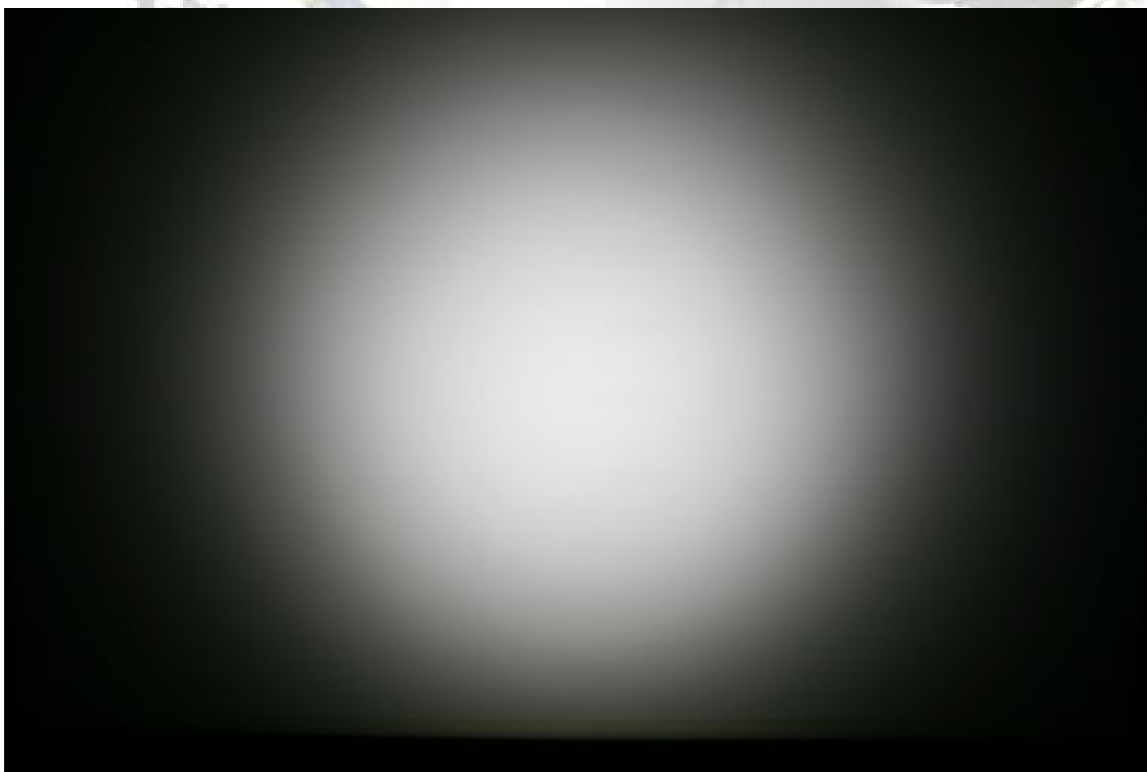
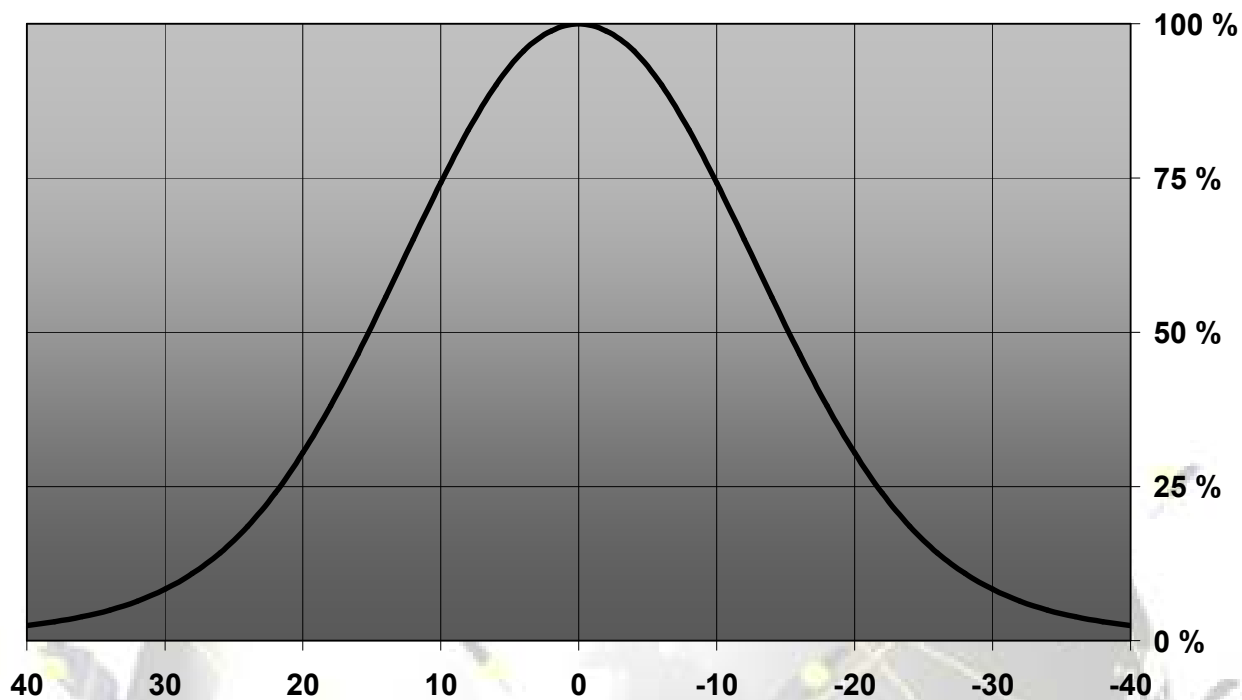


© Ledil Oy – PRELIMINARY - Subject to change without prior notice

Relative intensity of CA11512_Tina2-D-N153

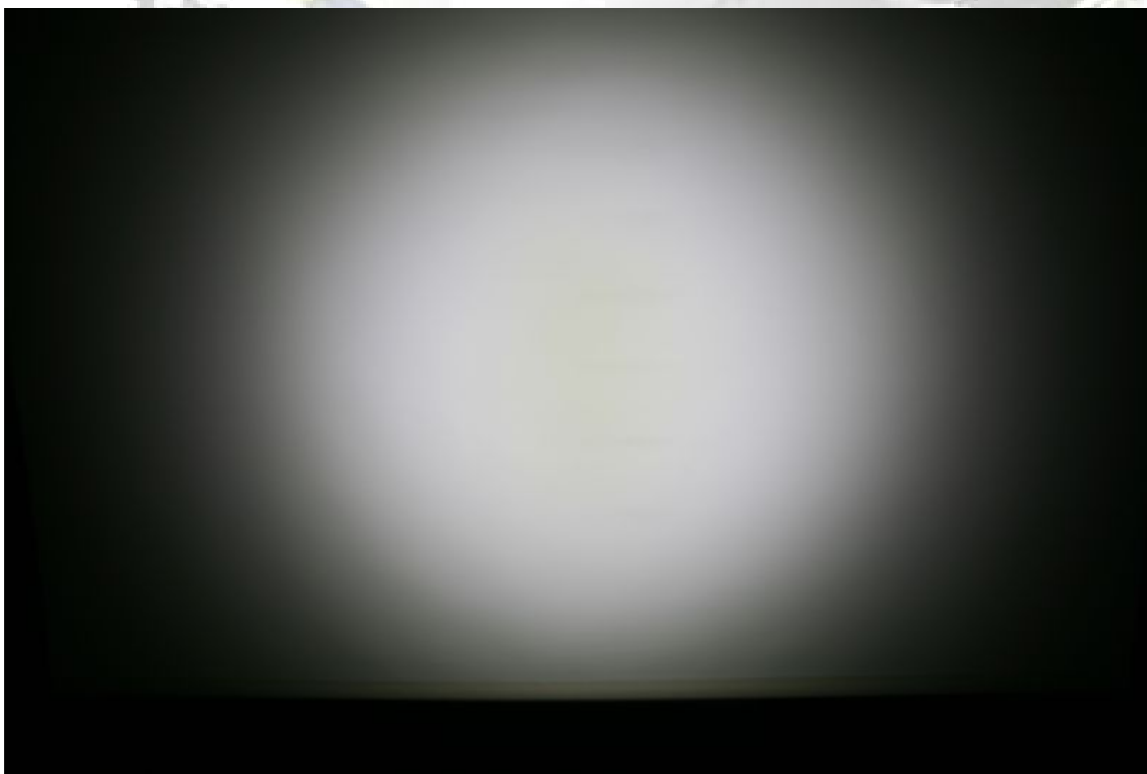
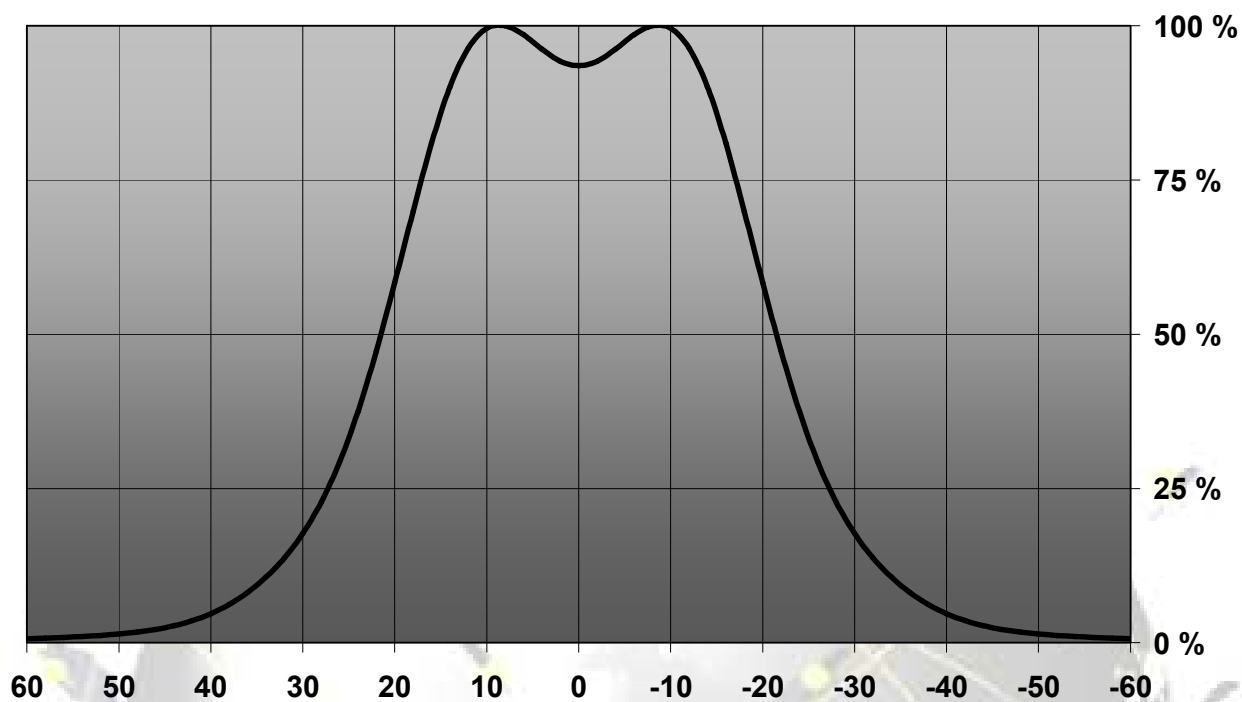


© Ledil Oy – PRELIMINARY - Subject to change without prior notice

Relative intensity of CA11513_Tina2-M-N153

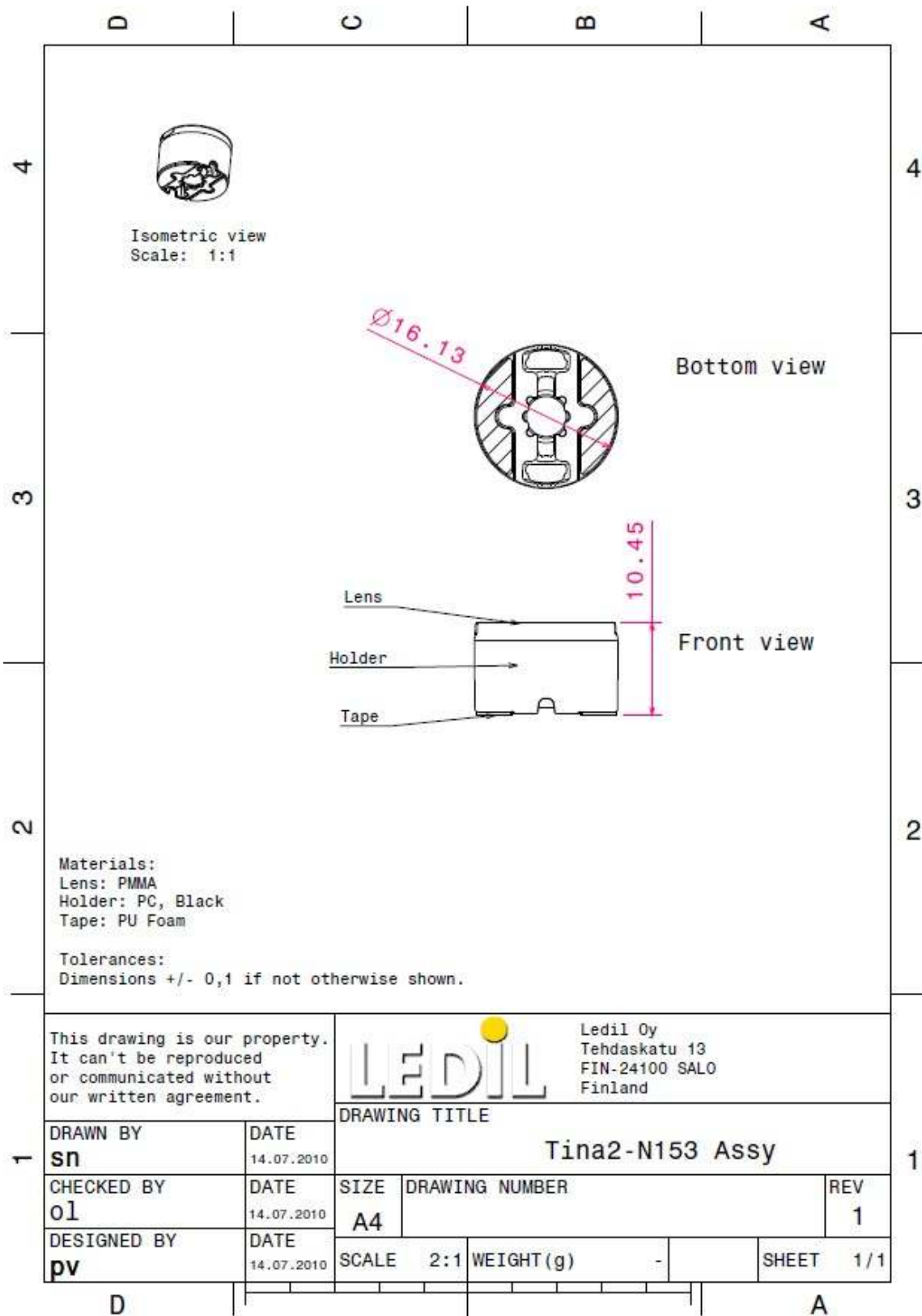
© Ledil Oy – PRELIMINARY - Subject to change without prior notice

Relative intensity of CA11514_Tina2-W-N153



© Ledil Oy – PRELIMINARY - Subject to change without prior notice

DRAWINGS



© Ledi Oy - PRELIMINARY - Subject to change without prior notice