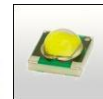


## STRADA-T-DW-XP-G LENSES FOR CREE XP-G LEDs



- Specially designed for Cree XP series of LEDs.
- New extremely wide SIDE-EMITTING design with very and uniform light distribution. Planned to be used mixed with Strada-T-DN lenses for optimal streetlight patterns.
- ASYMMETRICAL design with excellent usable efficiency and beam control.
- Efficiently and easily fulfilling different requirements for urban and road lighting when used together with Strada-T-DN.
- Comes with integrated positioning pins.
- Lens material optical grade PMMA. Allows use of high current and temperature conditions
- Best available optical efficiency, approximately 92%.
- Fastening to heat sink with or without PU foam adhesive tape of automotive grade, please select which suits the best for your needs.

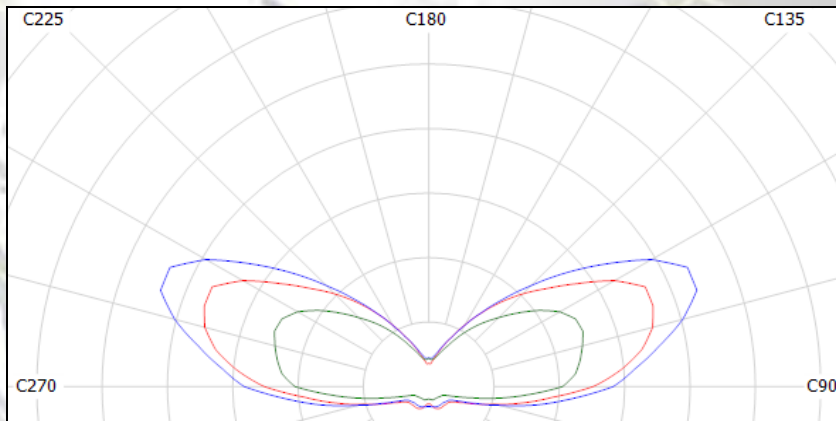
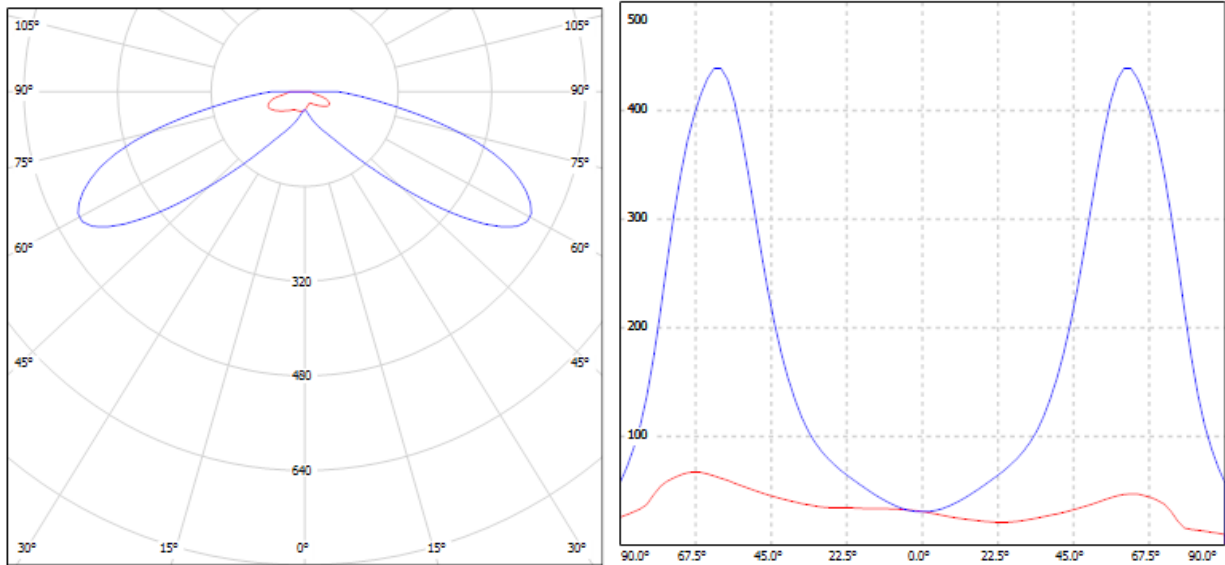
### LENS TYPES

| NAME                  | ORDERING CODE                  | FWHM Angle             |
|-----------------------|--------------------------------|------------------------|
| Strada-T-DW-XP-G      | C11425_Strada-T-DW-XP-G        | approx. $\pm 78^\circ$ |
| Strada-T-DW-XP-G-TAPE | CA11426_Strada-T-DW-XP-G -tape | approx. $\pm 78^\circ$ |

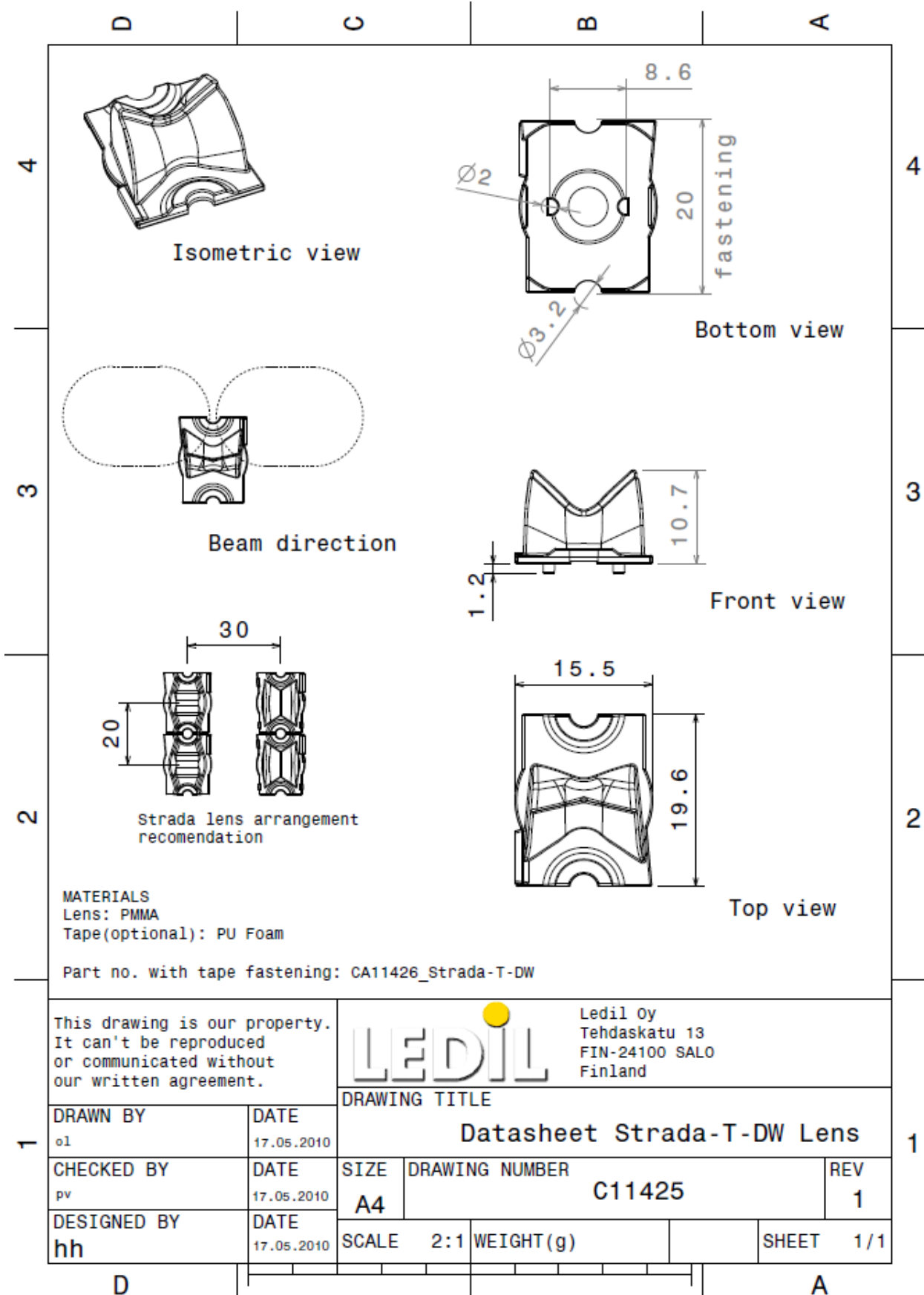
Eulumdat & IES files available by request.

© Ledil Oy – PRELIMINARY - Subject to change without prior notice

## MEASUREMENT DATA & DRAWING



© Ledil Oy – PRELIMINARY - Subject to change without prior notice



This drawing is our property.  
 It can't be reproduced  
 or communicated without  
 our written agreement.



Ledil Oy  
 Tehdaskatu 13  
 FIN-24100 SALO  
 Finland

DRAWING TITLE

Datasheet Strada-T-DW Lens

|                   |                    |
|-------------------|--------------------|
| DRAWN BY<br>o1    | DATE<br>17.05.2010 |
| CHECKED BY<br>pv  | DATE<br>17.05.2010 |
| DESIGNED BY<br>hh | DATE<br>17.05.2010 |

|              |                          |              |
|--------------|--------------------------|--------------|
| SIZE<br>A4   | DRAWING NUMBER<br>C11425 | REV<br>1     |
| SCALE<br>2:1 | WEIGHT(g)                | SHEET<br>1/1 |