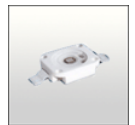


## STRADA-DW-GD LENSES FOR OSRAM-OS DRAGON SERIES OF LEDs



- Specially designed for Osram-os Golden Dragon Plus LEDs.
- New extremely wide SIDE-EMITTING design with very and uniform light distribution.
- Lens material optical grade PMMA. Allows use of high current and temperature conditions
- Best available optical efficiency, approximately 92%.
- Fastening to heat sink with or without PU foam adhesive tape of automotive grade, please select which suits the best for your needs.

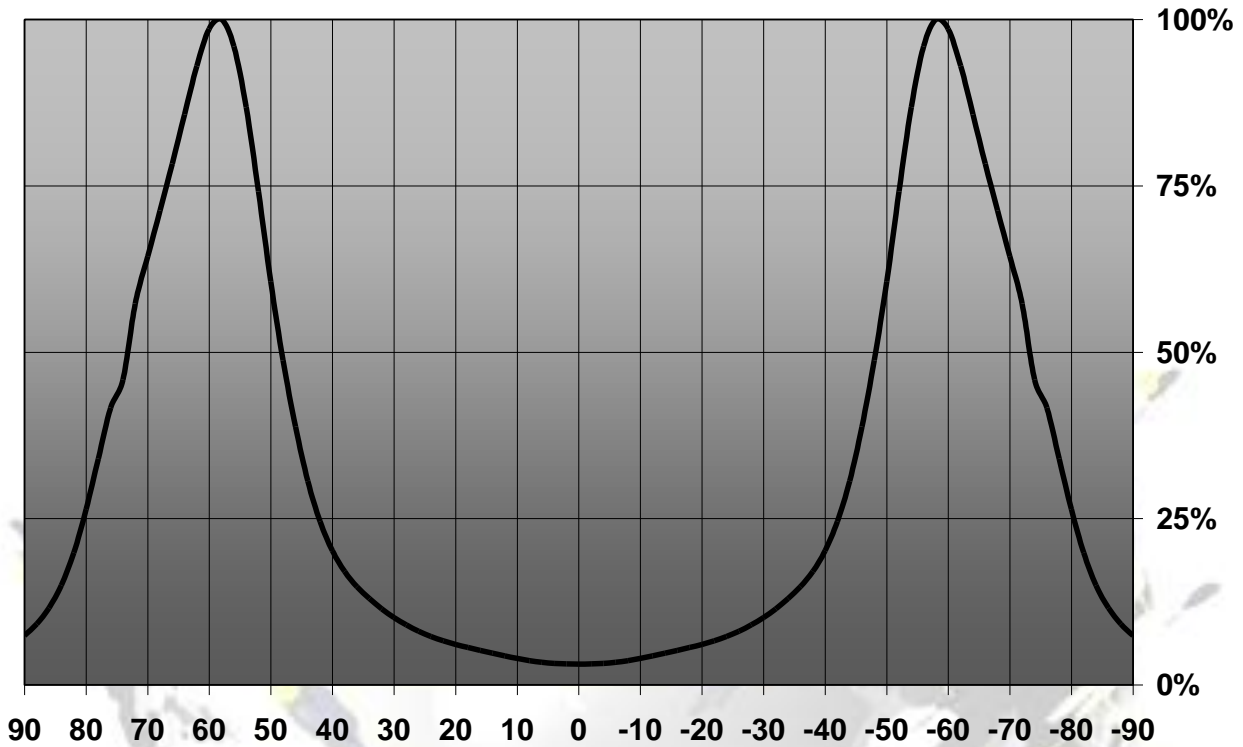
### LENS TYPES

NAME	ORDERING CODE	FWHM Angle
Strada-DW-GD	C11132_Strada-DW-GD	±48° - ±74°
Strada-DW-GD-TAPE	CA11180_Strada-DW-GD-tape	±48° - ±74°

EULUMDAT & IES FILES AVAILABLE BY REQUEST

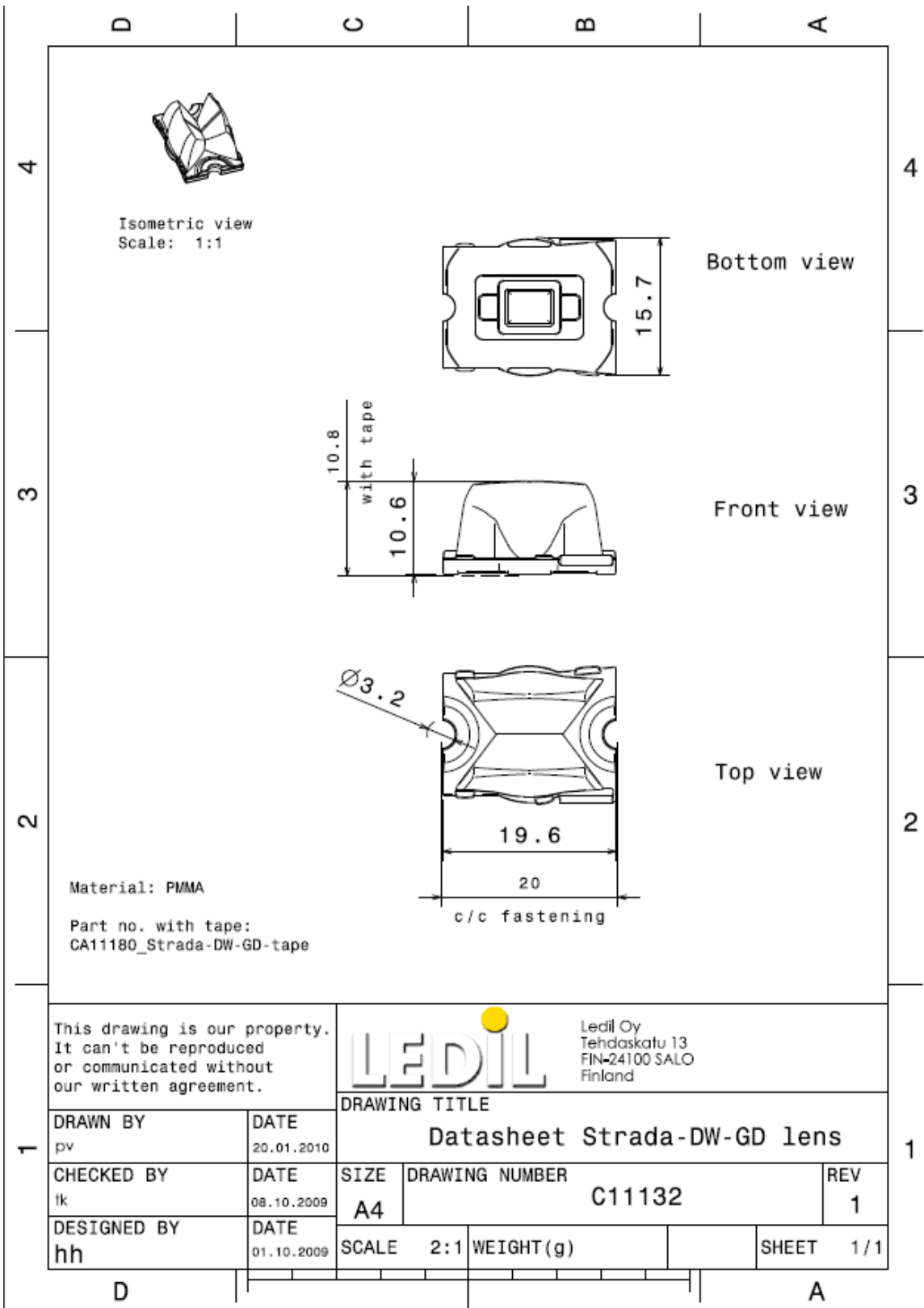
**MEASUREMENT DATA**

Relative Intensity of C11132\_Strada-DW-GD



© Ledil Oy – PRELIMINARY - Subject to change without prior notice

## DRAWING



© Ledil Oy – PRELIMINARY - Subject to change without prior notice