

RGBX lenses for Cree's MC-E series of LEDs



www.cree.com



- Specially designed for Cree's MC-E series of LEDs.
- Special care taken to make a uniform RGB, white or warm white illumination.
- Lens material optical grade PMMA. Allows use of high current and temperature conditions
- Best available optical efficiency, up to 90%.

LENS TYPES

NAME	ORDERING CODE	FWHM Angle
RGBX-MC Smooth Spot	CA10961_RGBX-MC-SS	±10°
RGBX-MC Medium	CA10944_RGBX-MC-M	±13°
RGBX-MC Oval	CA10945_RGBX-MC-O	±24 x ±16°

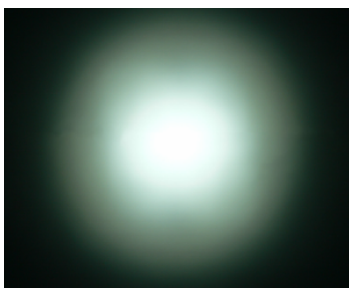
SMOOTH SPOT lens is a pure collimator lens with no good color mixing properties. SMOOTH SPOT lens is recommended for white light applications or color applications where maximum light intensity is needed.

MEDIUM lens is optimal for cases where a pleasant, medium-type spotlight distribution with uniform color mixing is wished.

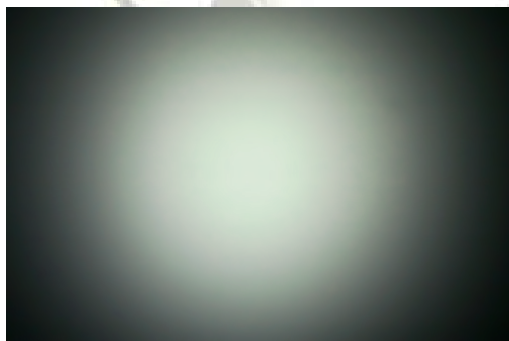
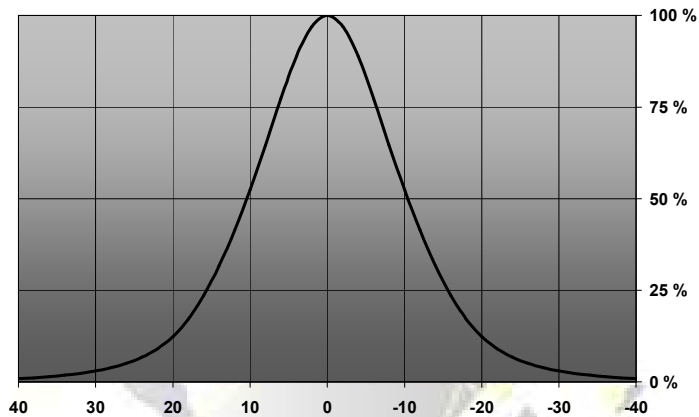
OVAL lens is optimal for cases where an oval beam with good color mixing is wished.

© Ledil Oy – PRELIMINARY - Subject to change without prior notice

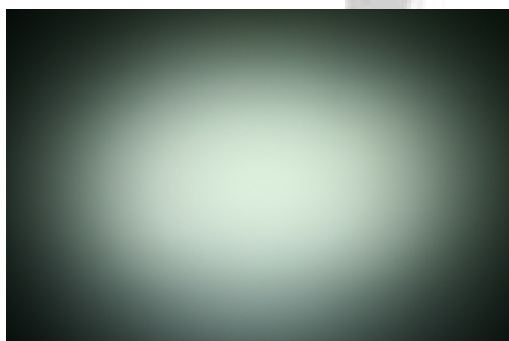
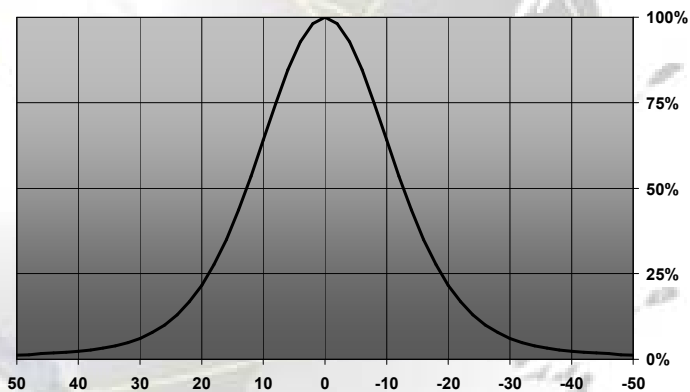
MEASUREMENT DATA



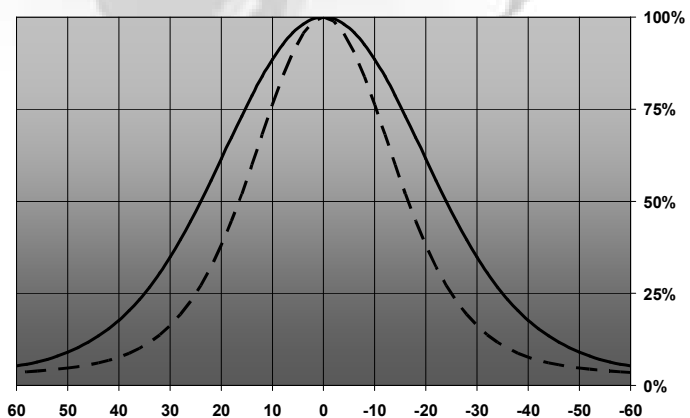
Relative Intensity of CA10961_RGBX-MC-SS



Relative Intensity of FA10944_RGBX-M

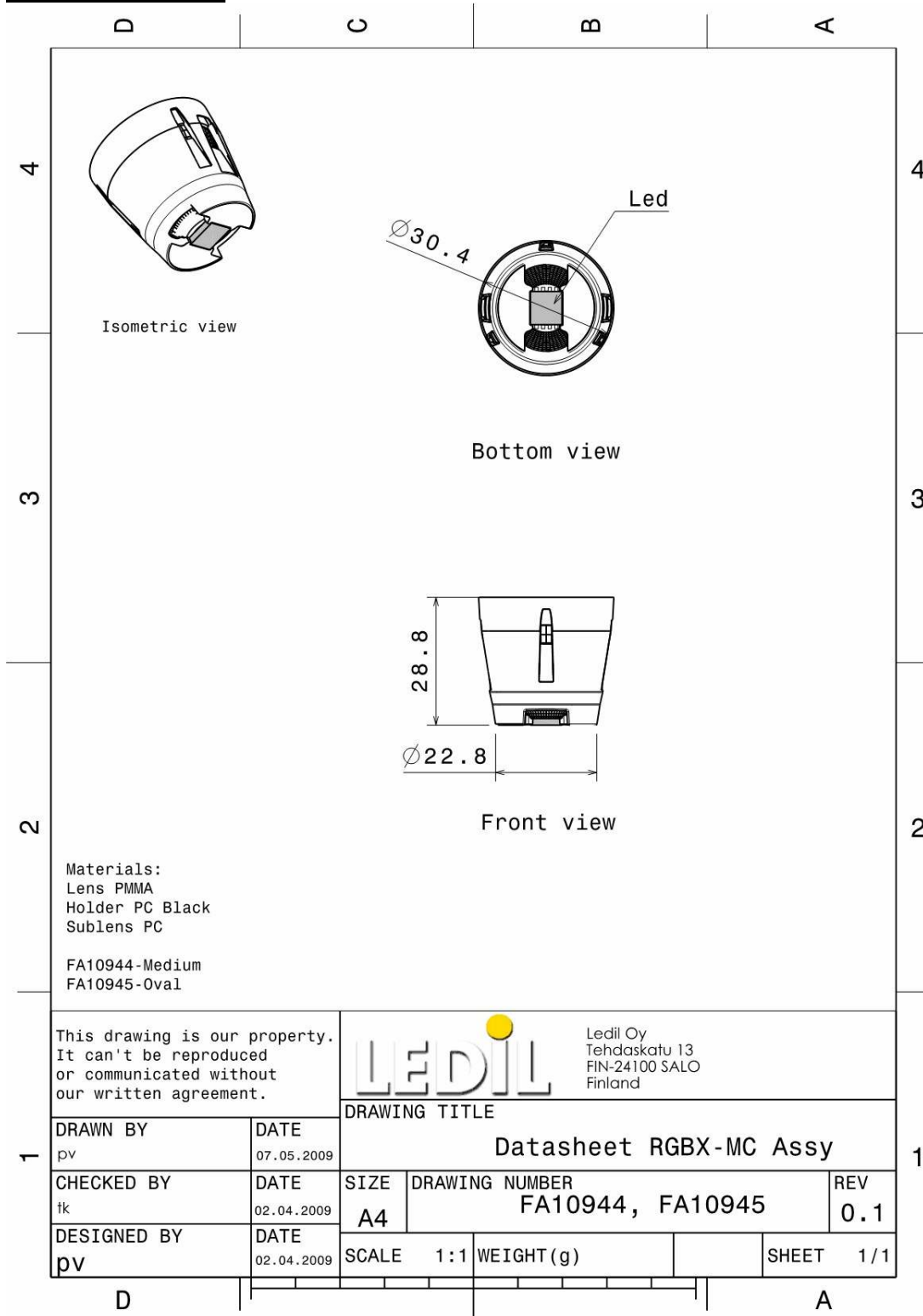


Relative Intensity of FA10945_RGBX-O



© Ledil Oy – PRELIMINARY - Subject to change without prior notice

DRAWINGS



© Ledil Oy – PRELIMINARY - Subject to change without prior notice