

TINA-TAPE lenses for CREE XP-G LEDs (UPDATED 20100311)



- Designed & optimized for Cree's XP-G series of LEDs
- Lens material optical grade PMMA with high UV and temperature resistance (130°C/220°F). Allows use of high current and temperature conditions
- Best available optical efficiency, over 90%, with an extremely good cutoff of light
- Fastening to heat sink with a PU foam adhesive tape of automotive grade (included)
- Compact dimensions 16.1 x 10.1 mm.

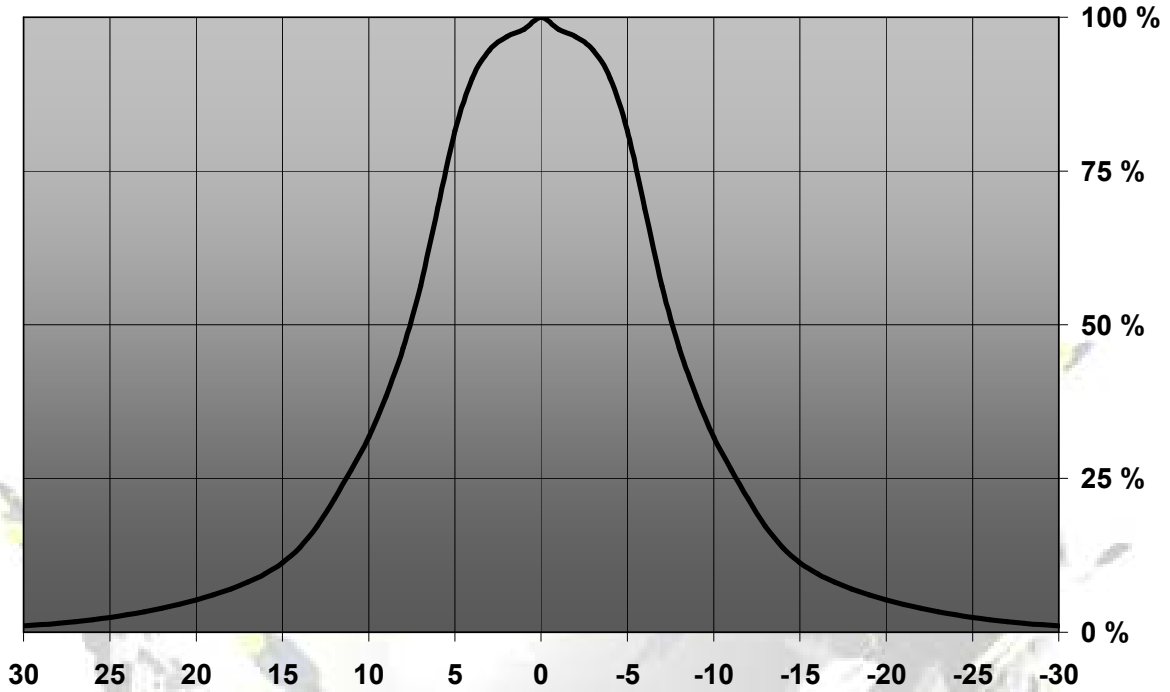
LENS TYPES

NAME	ORDERING CODE	FWHM Angle
TINA-XP-G Real Spot	FA10887_Tina-XP-G-RS	±7°
TINA-XP-G Diffuser	FA10644_Tina-XP-G-D	±9°
TINA-XP-G Medium	FA10645_Tina-XP-G-M	±15.5°
TINA-XP-G Wide	FA10838_Tina-XP-G-W	±25°
TINA-XP-G Oval	FA11200_Tina-XP-G-O	±20°x±9°

© Ledil Oy – PRELIMINARY - Subject to change without prior notice

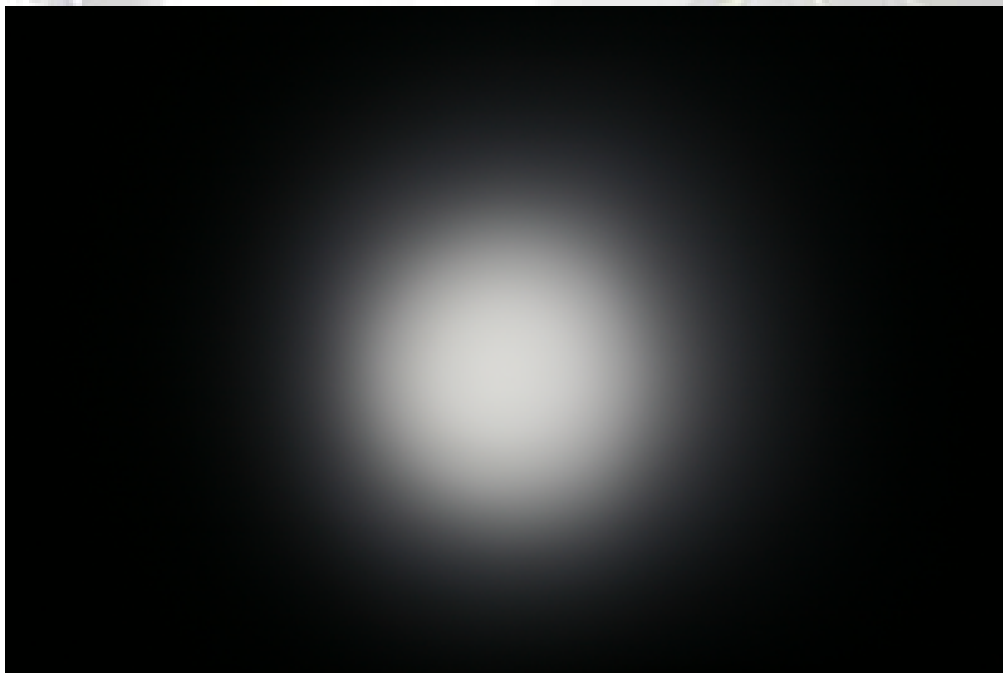
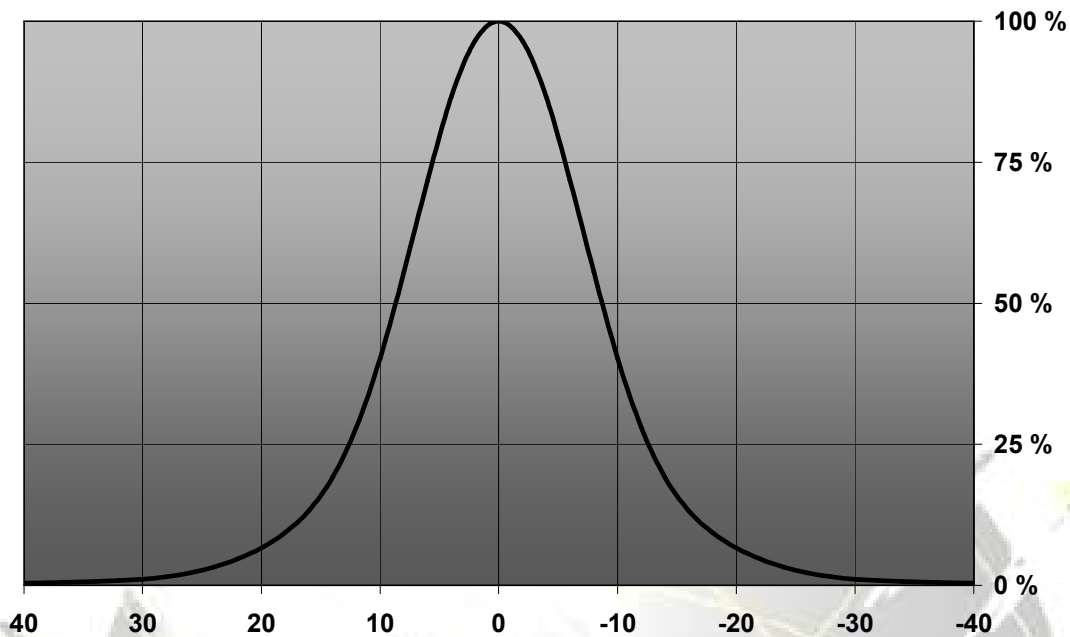
MEASUREMENTS

Relative Intensity of FA10887_Tina-XP-G-RS



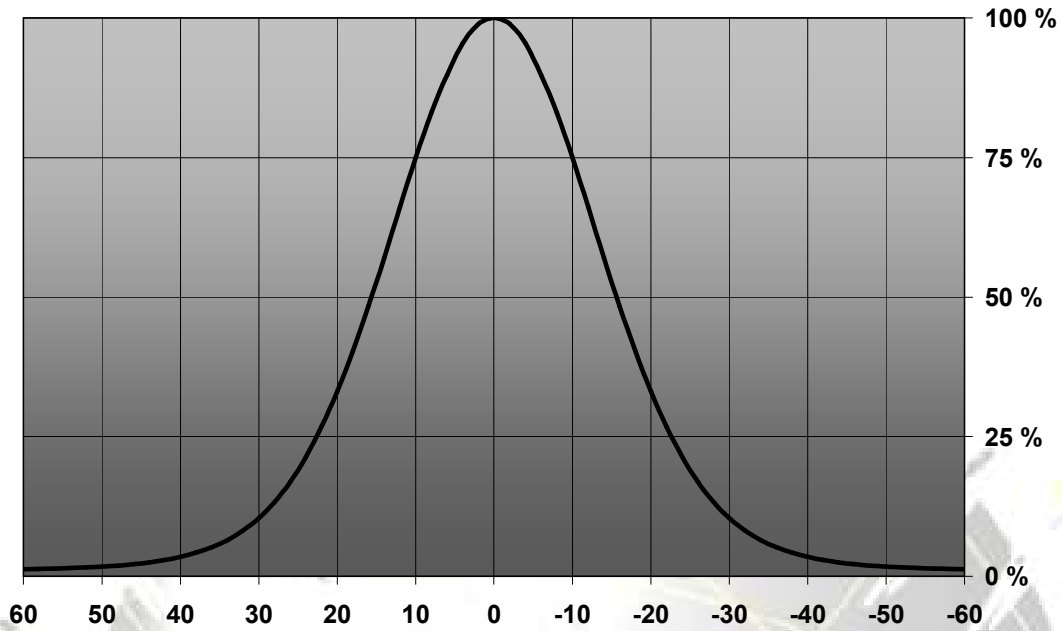
© Ledil Oy – PRELIMINARY - Subject to change without prior notice

Relative Intensity of FA10644_Tina-XP-D

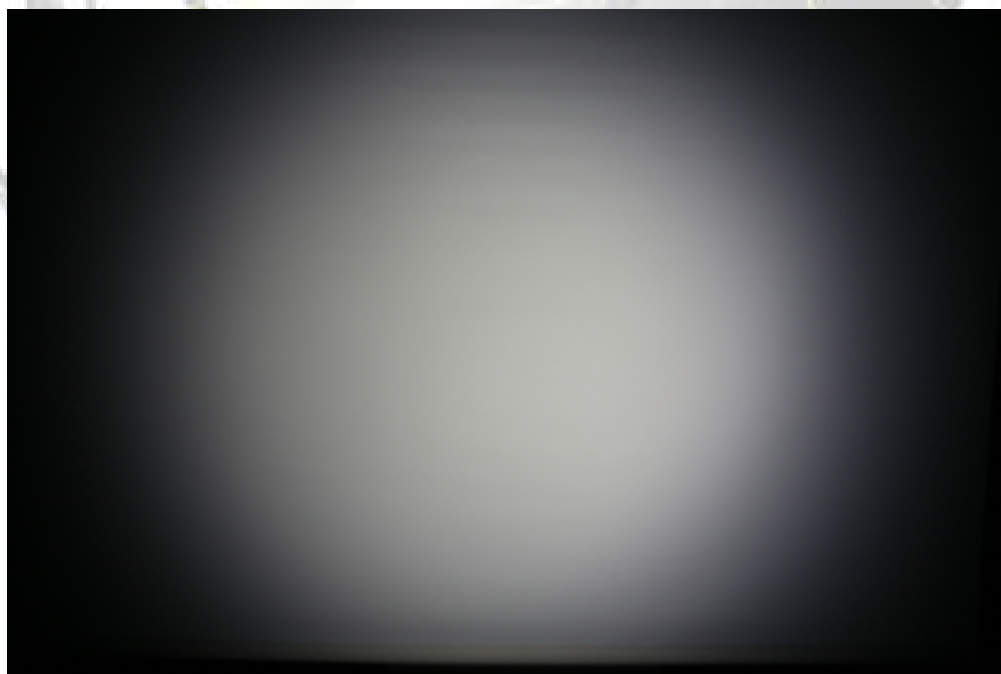
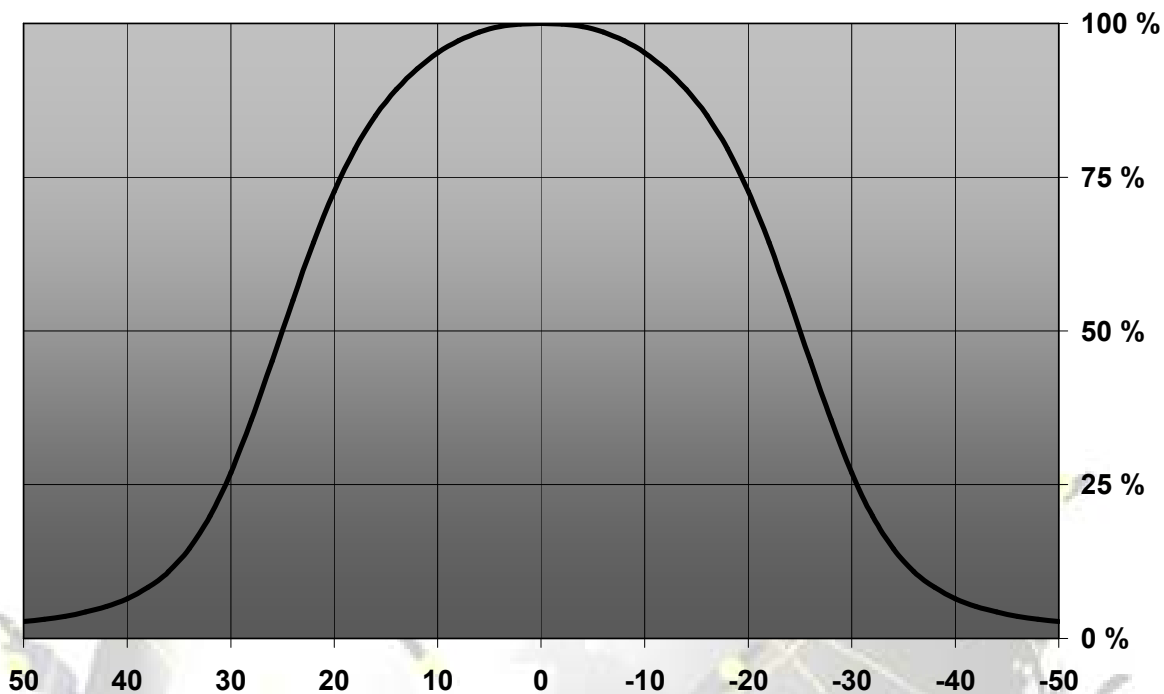


© Ledil Oy – PRELIMINARY - Subject to change without prior notice

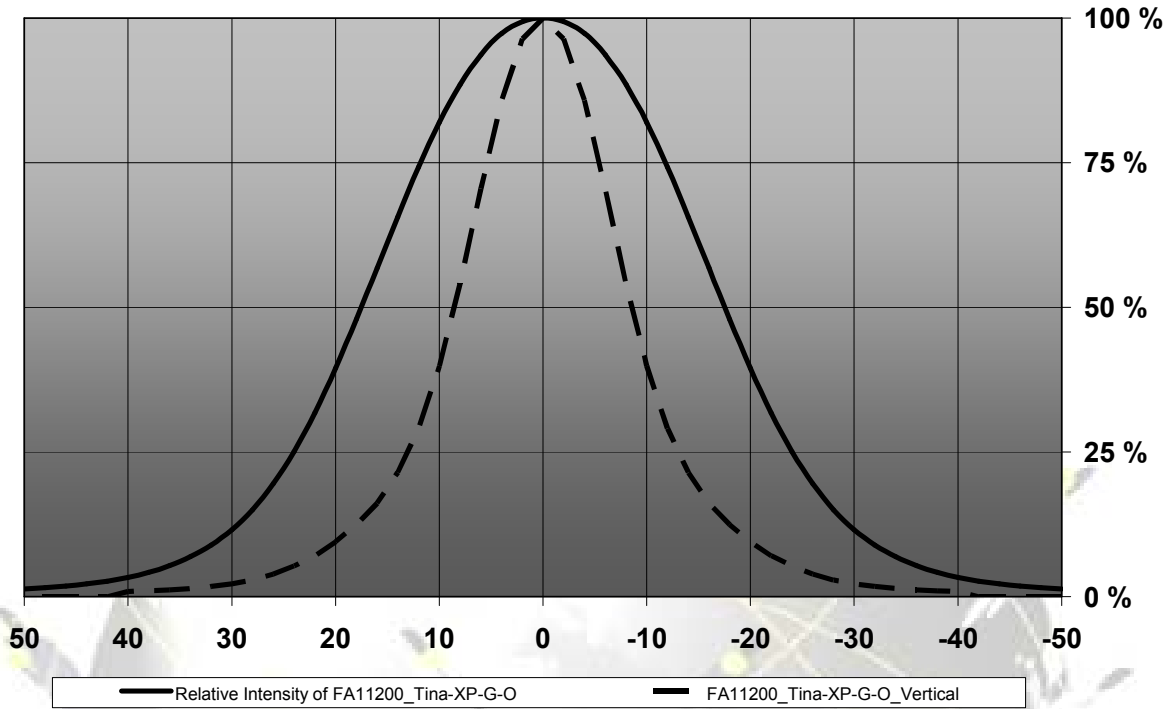
Relative Intensity of FA10645_Tina-XP-M



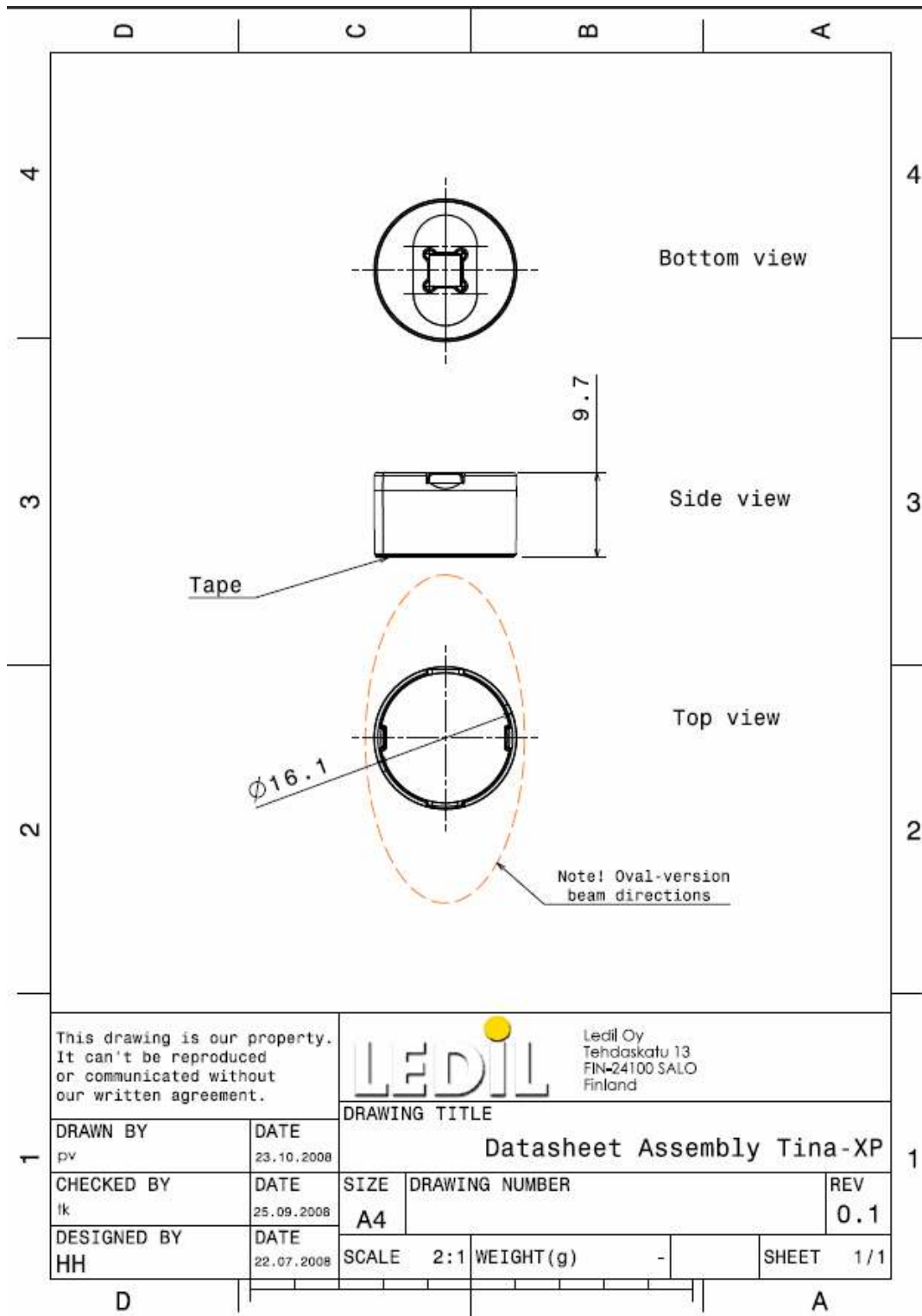
Relative Intensity of FA10838_Tina-XP-G-W



Relative Intensity of FA11200_Tina-XP-G-O



DRAWINGS



© Ledil Oy – PRELIMINARY - Subject to change without prior notice