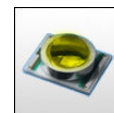


## STRADA-DW-XR LENSES FOR CREE XR-E LEDs



- Specially designed for Cree XR-E series of LEDs.
- New extremely wide SIDE-EMITTING design with very and uniform light distribution.
- Comes with integrated positioning pins.
- Lens material optical grade PMMA. Allows use of high current and temperature conditions
- Best available optical efficiency, approximately 92%.
- Fastening to heat sink with or without PU foam adhesive tape of automotive grade, please select which suits the best for your needs.

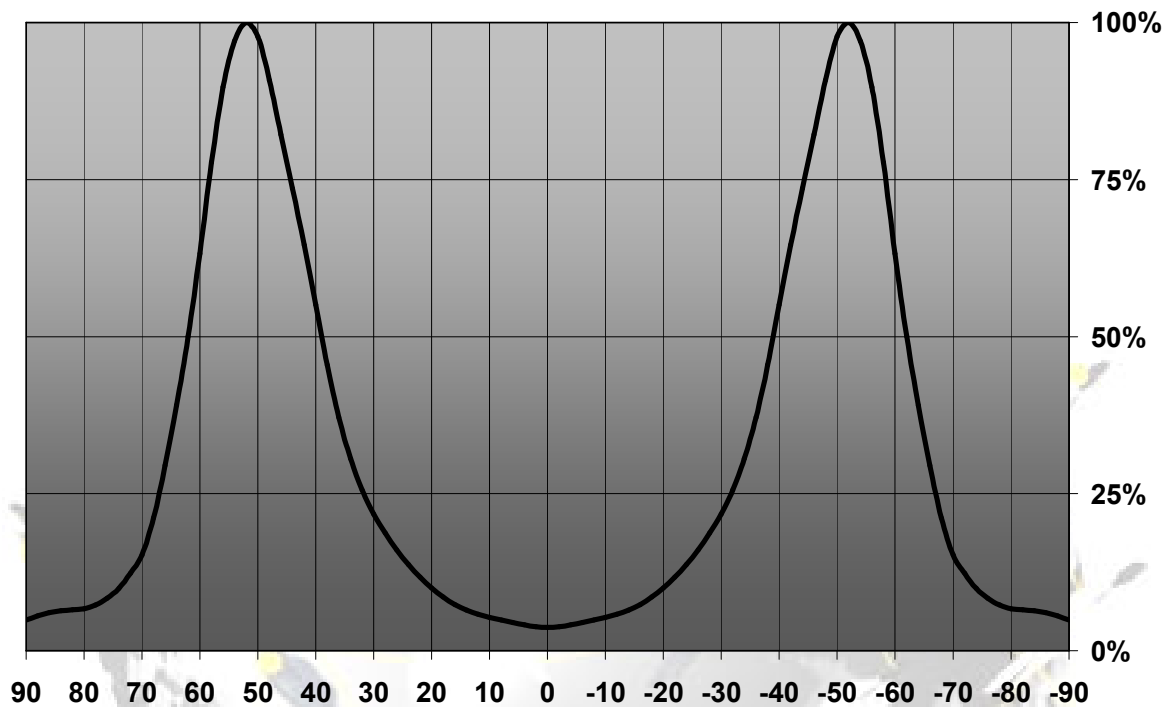
### LENS TYPES

NAME	ORDERING CODE	FWHM Angle
Strada-DW-XR	C10757_Strada-DW-XR	±40° - ±63°
Strada-DW-XR-TAPE	CA11179_Strada-DW-XR-tape	±40° - ±63°

© Ledil Oy – PRELIMINARY - Subject to change without prior notice

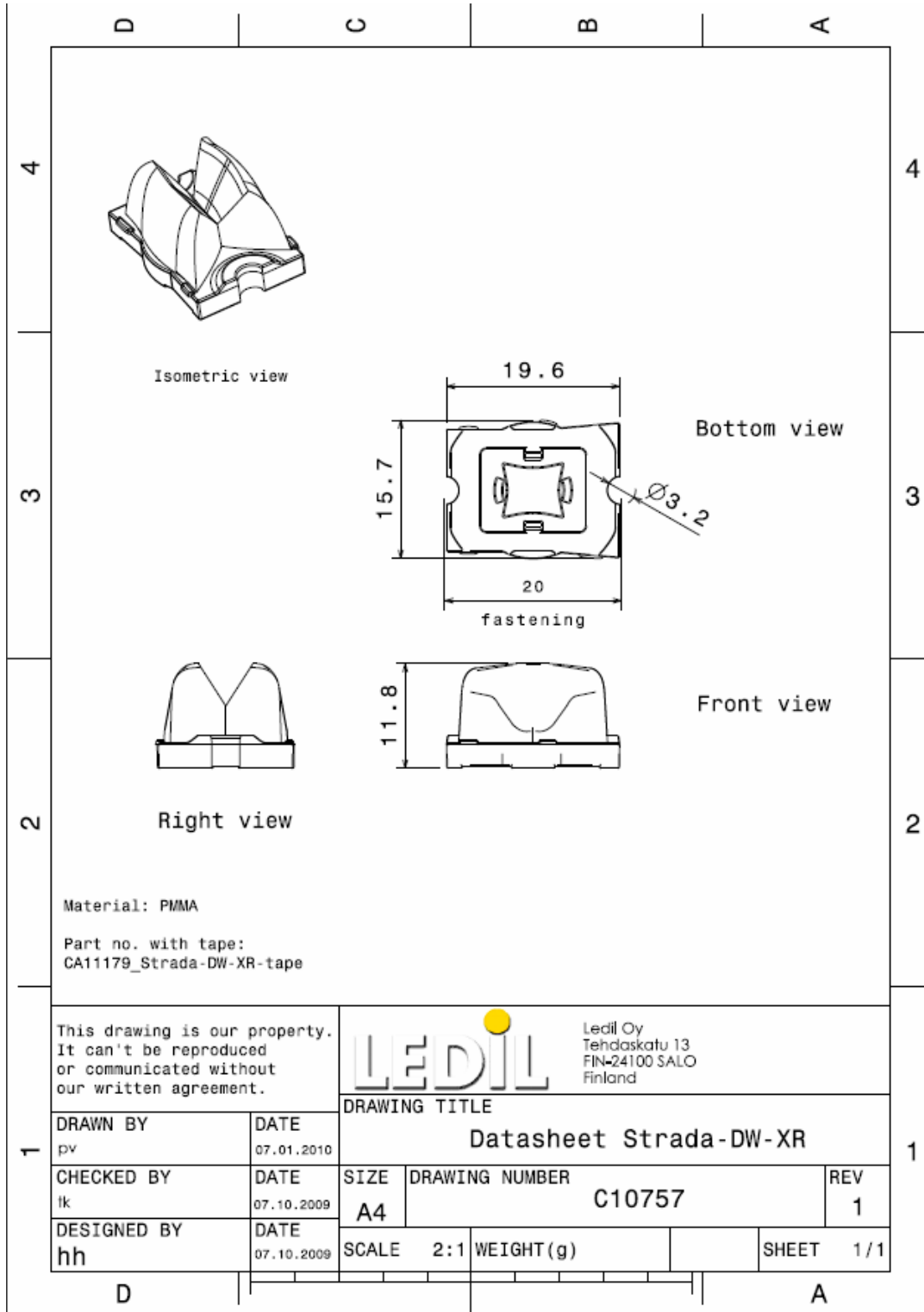
**MEASUREMENT DATA**

Relative Intensity of C10757\_Strada-DW-XR



© Ledil Oy – PRELIMINARY - Subject to change without prior notice

## DRAWINGS



© Ledil Oy – PRELIMINARY - Subject to change without prior notice