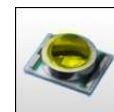


STRADA-DN-XR LENSES FOR CREE XR-E LEDs



- Specially designed for Cree XR-E series of LEDs.
- New extremely wide street light design with very wide horizontal and vertical angle.
- Predecessor of the Strada-B, wider distribution than ever before.
- Special care taken to make a uniform white or warm white illumination. Lenses work well with other colors, too.
- Lens material optical grade PMMA. Allows use of high current and temperature conditions
- Best available optical efficiency, approximately 95%.
- Fastening to heat sink with or without PU foam adhesive tape of automotive grade, please select which suits the best for your needs.

LENS TYPES

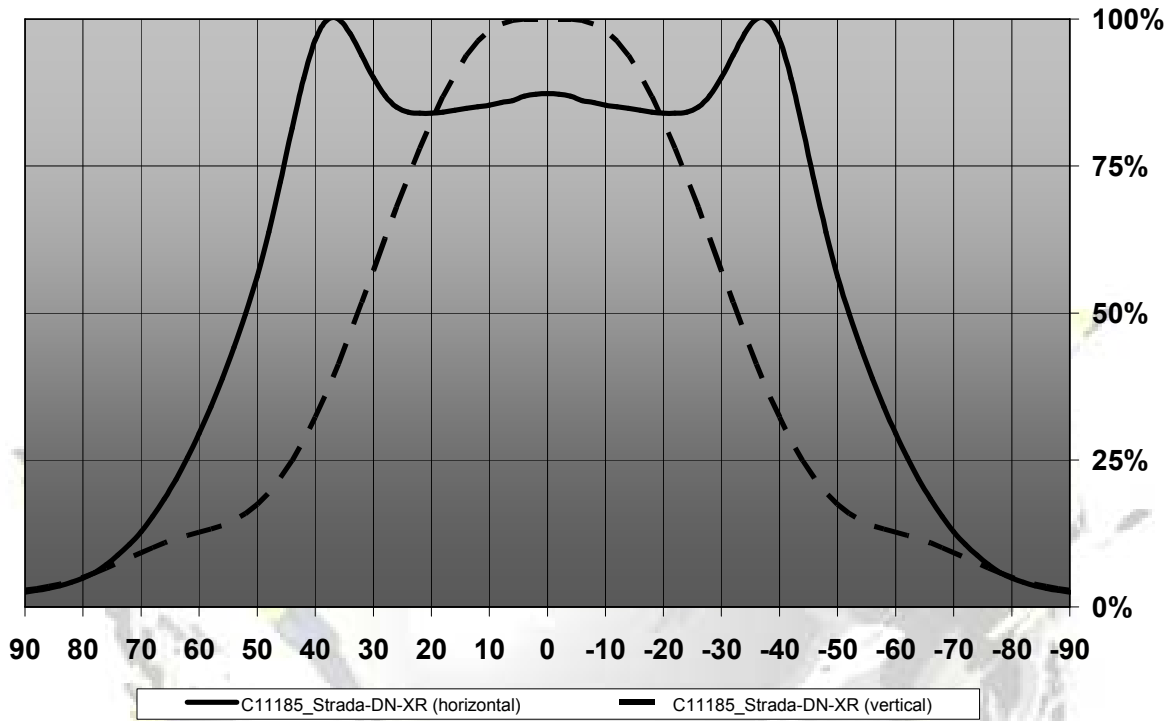
NAME	ORDERING CODE	FWHM Angle
Strada-DN-XR	C11185_Strada-DN-XR	±52° x ±33°
Strada-DN-XR-TAPE	CA11186_Strada-DN-XR-tape	±52° x ±33°

EULUMDAT & IES FILES AVAILABLE BY REQUEST

© Ledil Oy – PRELIMINARY - Subject to change without prior notice

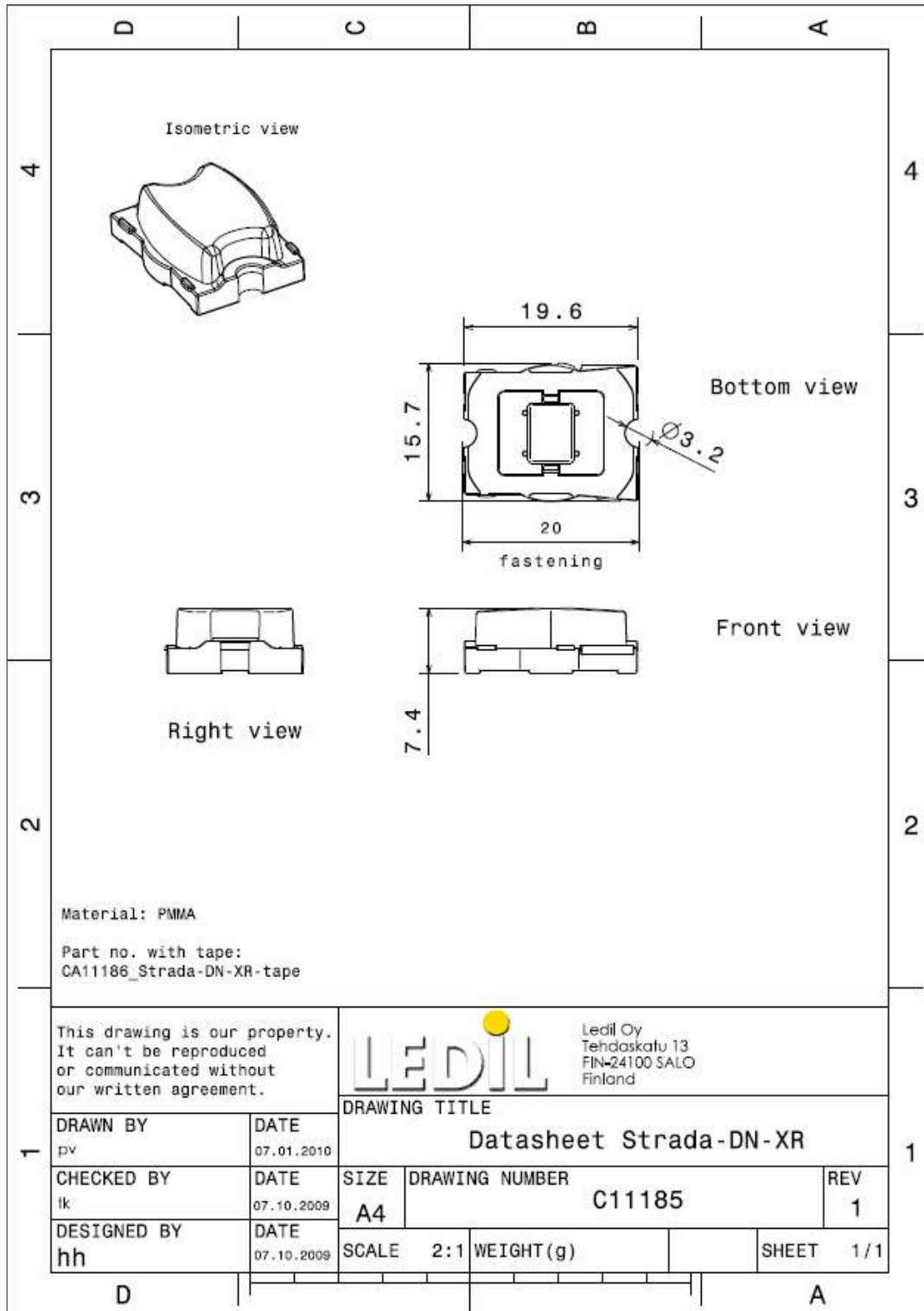
MEASUREMENT DATA

Relative Intensity of C11185_Strada-DN-XR



© Ledil Oy – PRELIMINARY - Subject to change without prior notice

DRAWINGS



© Ledil Oy - PRELIMINARY - Subject to change without prior notice