

## Regina reflector for CREE XP-G/E LEDs



- Designed & optimized for Cree's XP-G series of LEDs, works very well with XP-E, too.
- Reflector material metallized PC. with high UV and temperature resistance (130°C/220°F). Allows use of high current and temperature conditions
- Best available optical efficiency, over 90%
- Small position pins, fastening to heat sink with droplets of glue.
- Compact dimensions 19mm x 15.3 mm (+ position pins 2.5mm)

## LENS TYPES

NAME	ORDERING CODE	FWHM Angle with XP-E	FWHM Angle with XP-G
Regina reflector	C11347_Regina	±4	±5°



XP-E

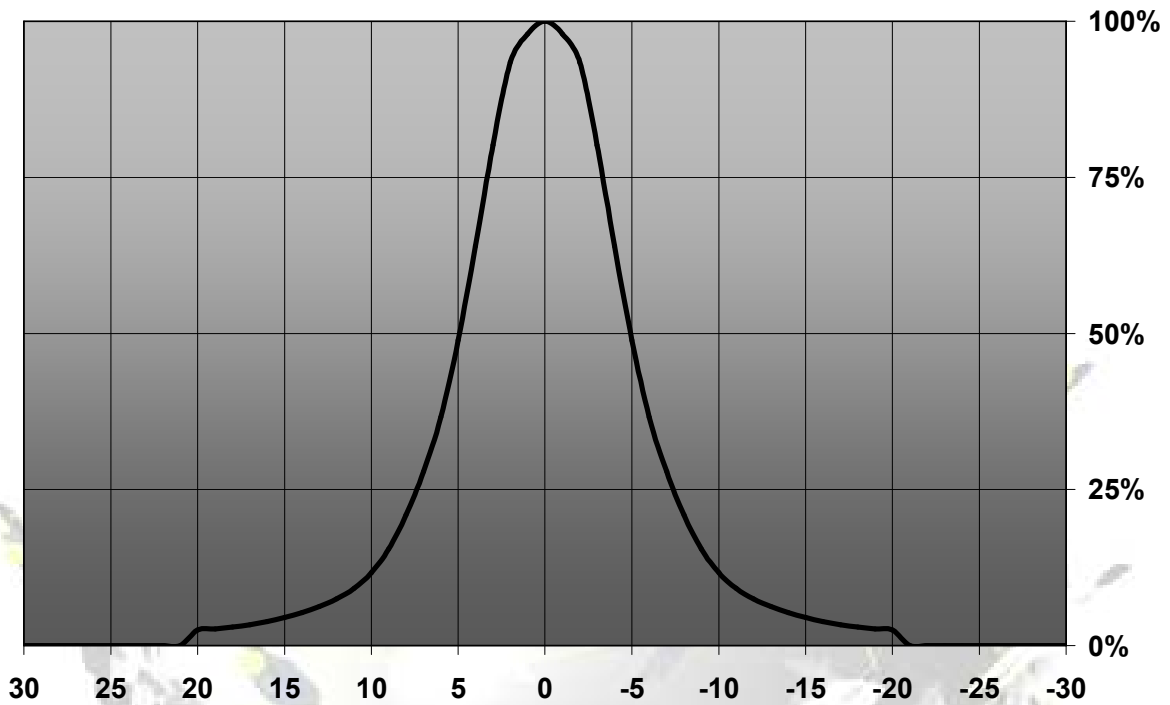


XP-G

© Ledil Oy – PRELIMINARY - Subject to change without prior notice

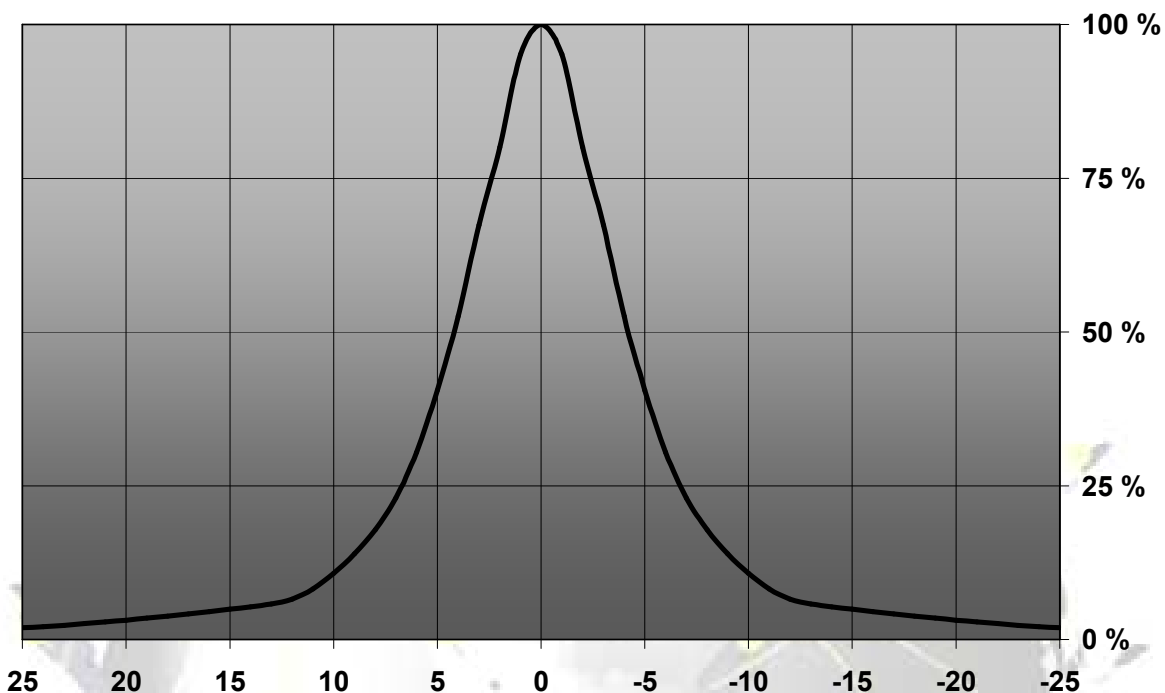
## MEASUREMENTS

Relative Intensity of C11347\_Regina



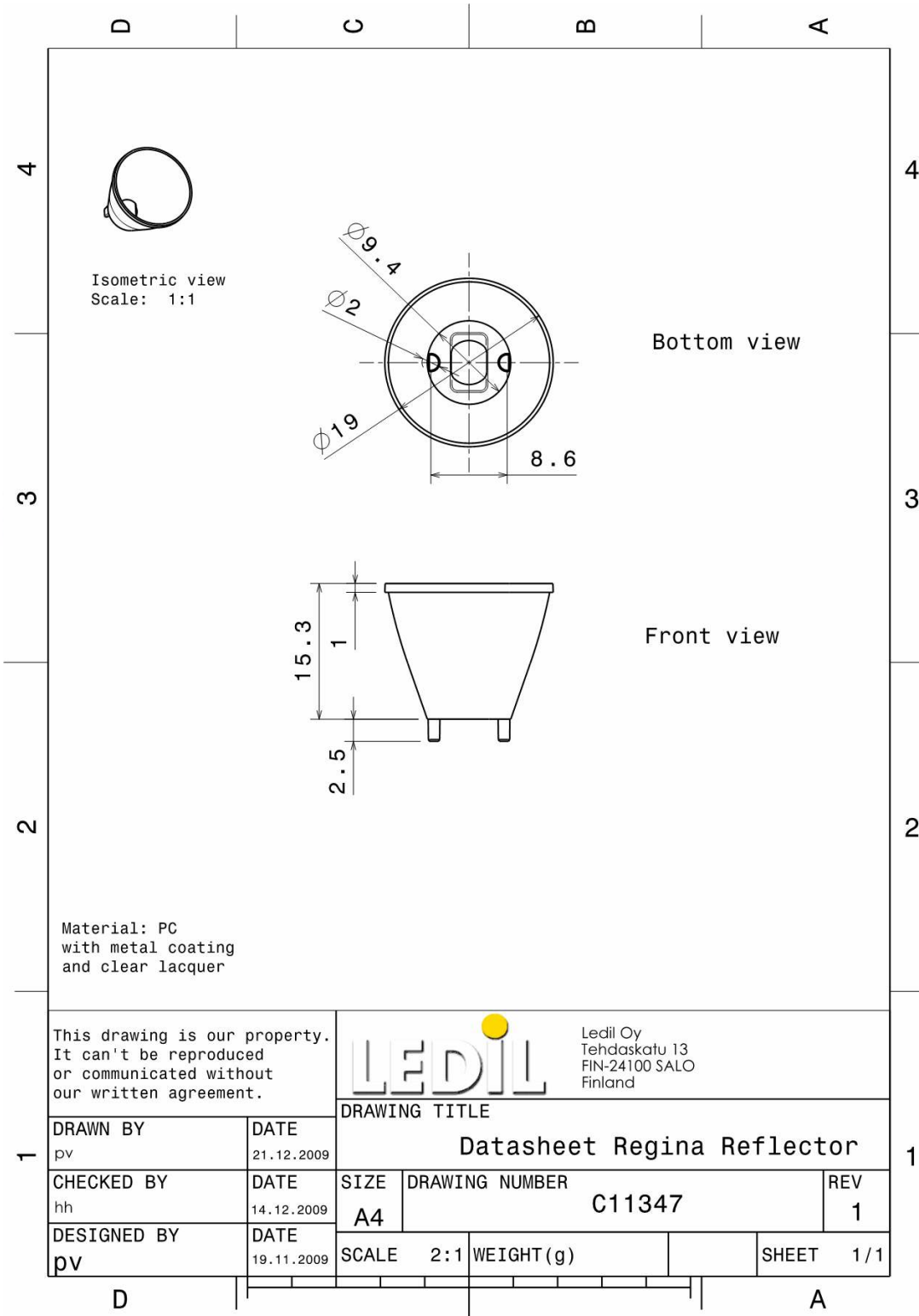
© Ledil Oy – PRELIMINARY - Subject to change without prior notice

Relative Intensity of C11347\_Regina-XP-E



© Ledil Oy – PRELIMINARY - Subject to change without prior notice

## DRAWINGS



© Ledil Oy - PRELIMINARY - Subject to change without prior notice