

LAURA lenses for CREE XP-E LEDs



- Designed & optimized for Cree XP-E series of LEDs
- Lens material optical grade PC with high UV and temperature resistance (130°C/220°F). Allows use of high current and temperature conditions
- Best available optical efficiency, up to 90%, with an extremely good cutoff of light
- Integrated holder. Fastening to heat sink with a PU foam adhesive tape of automotive grade
- Compact dimensions 21.6 x 21.6 mm. Square form enables easy build of matrix without any gaps between lenses.

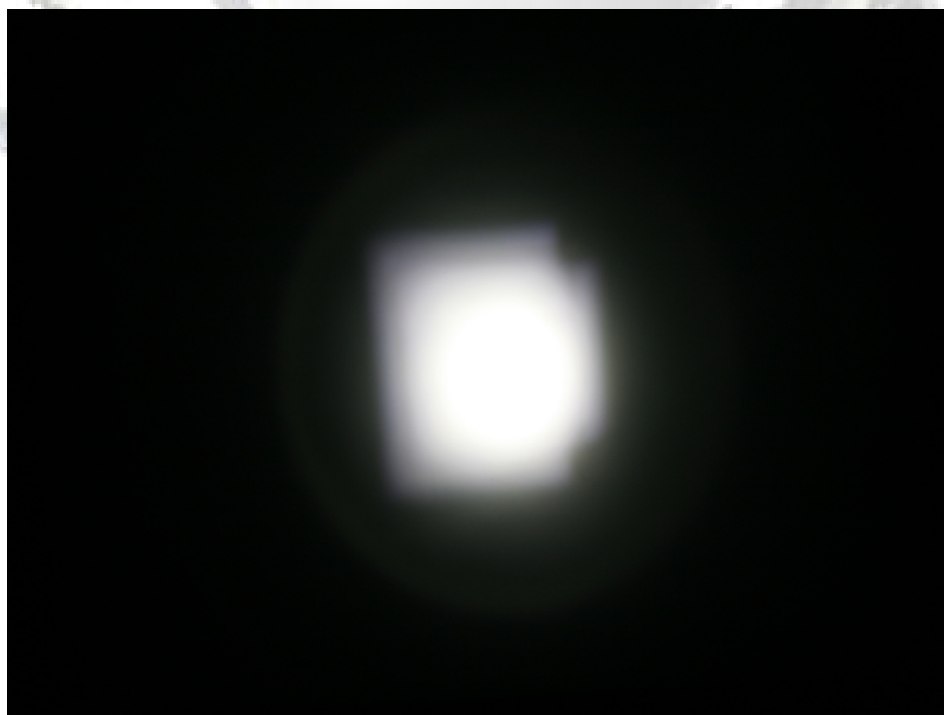
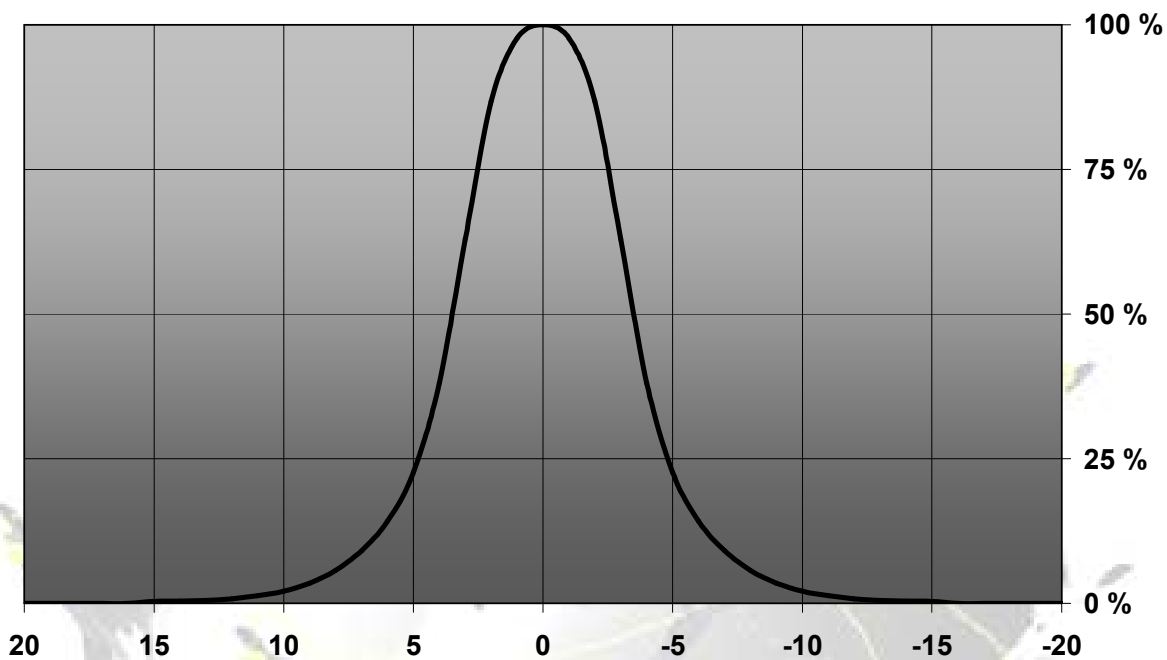
LENS TYPES

NAME	ORDERING CODE	FWHM Angle
LAURA REAL SPOT	CA11353_Laura-RS-XP-tape	±3.5°

© Ledil Oy – PRELIMINARY - Subject to change without prior notice

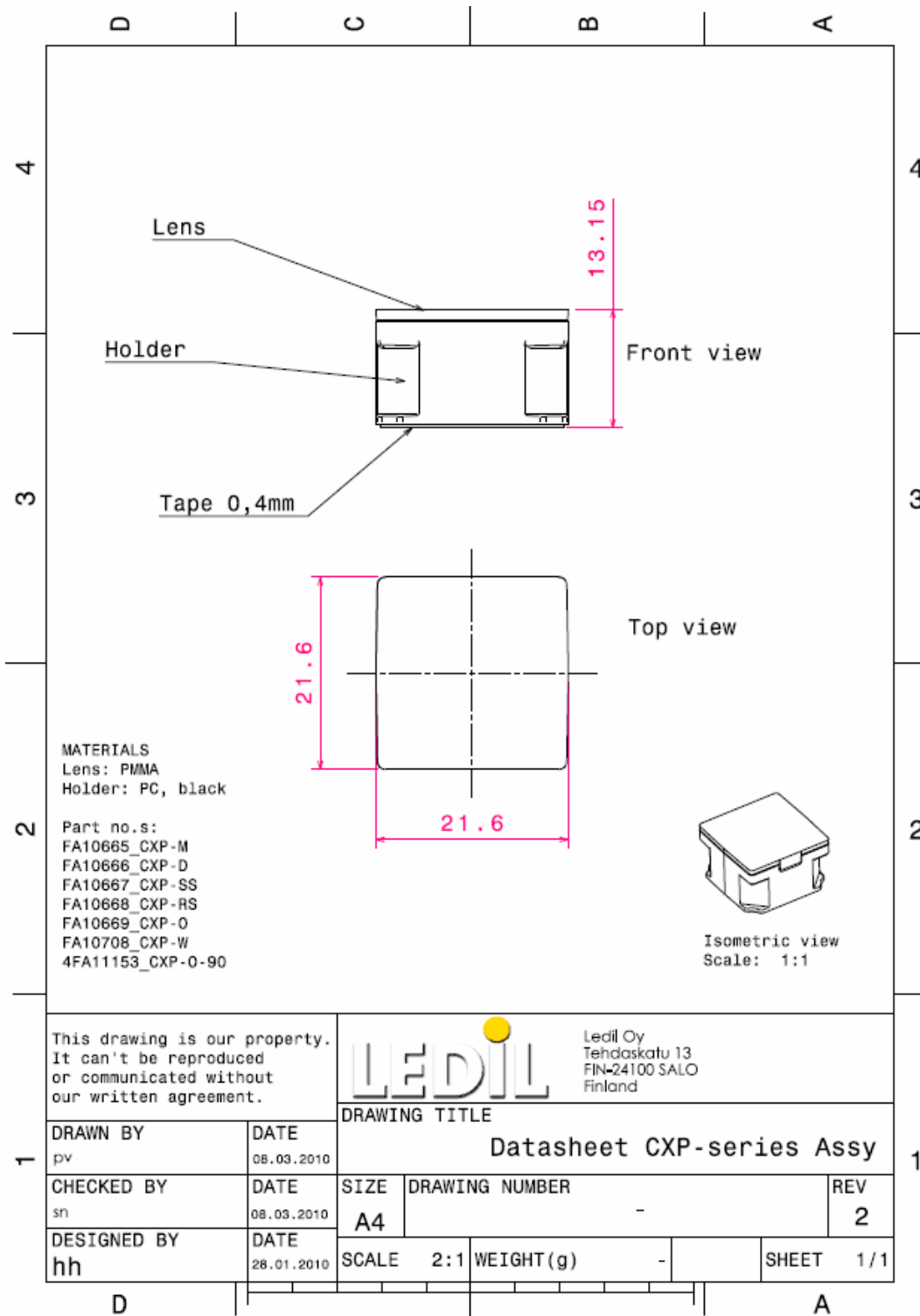
MEASUREMENTS

Relative Intensity of CA11353_Laura-RS-XP-tape



© Ledil Oy – PRELIMINARY - Subject to change without prior notice

DRAWINGS



© Ledil Oy – PRELIMINARY - Subject to change without prior notice