

LMX6 LENSES FOR CREE MX6 LEDs



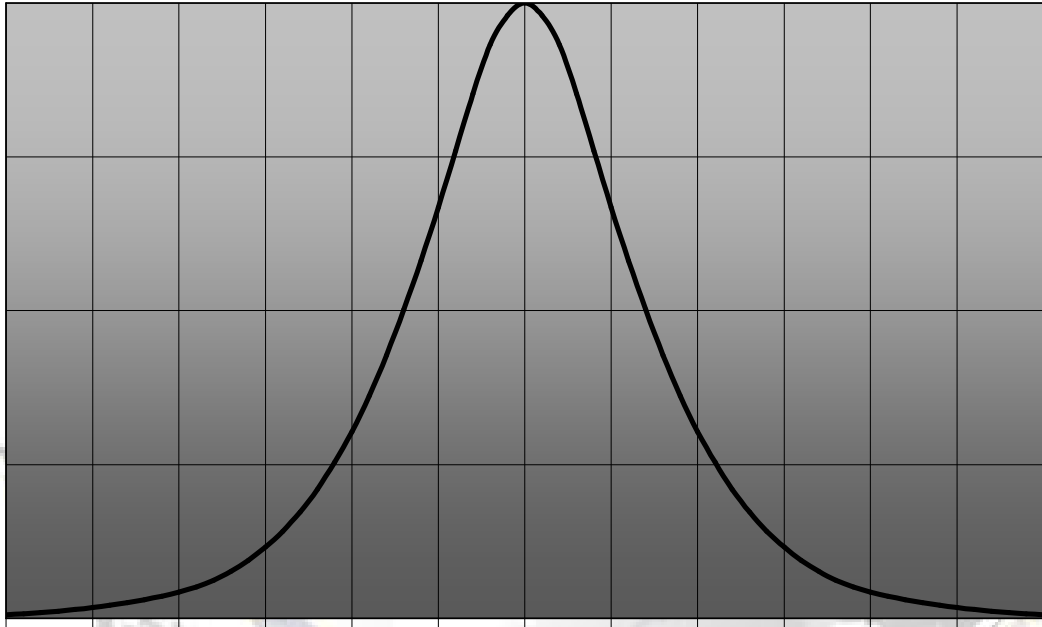
- Specially designed for Cree MX6 series of LEDs
- Special care taken to make a uniform white or warm white illumination. Lenses work well with other colors, too.
- Lens material optical grade PMMA. Allows use of high current and temperature conditions
- Best available optical efficiency, more than 90%, with an extremely good cutoff of light
Fastening to PCB with TAPE

LENS TYPES

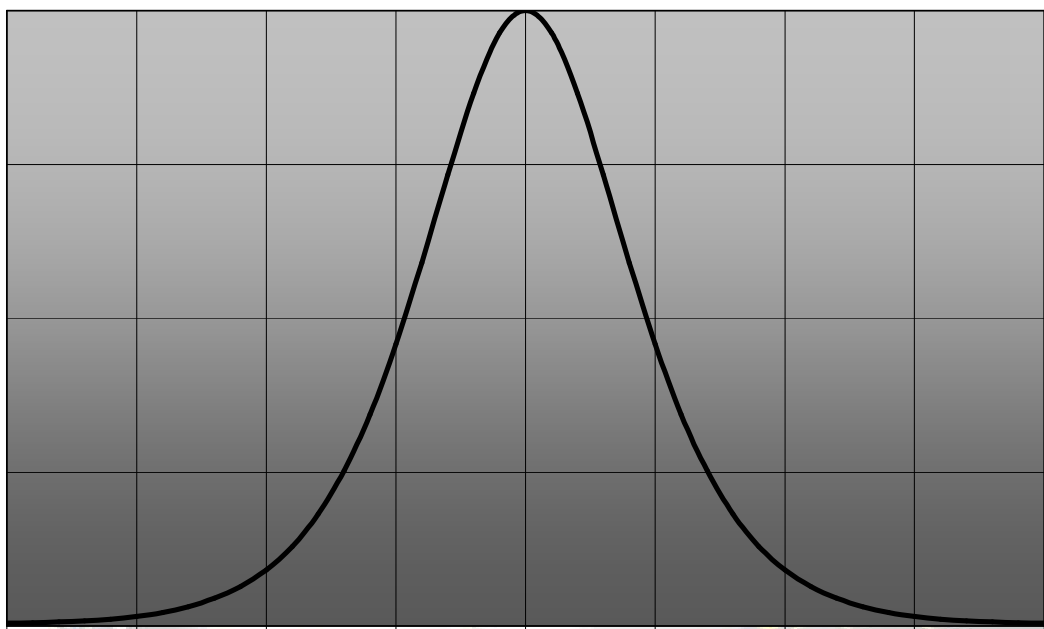
NAME	ORDERING CODE	FWHM Angle
LMX6 REAL SPOT	FA10696_LMX6-RS	±7°
LMX6 DIFFUSER	FA10695_LMX6-D	±9°
LMX6 MEDIUM	FA10697_LMX6-M	±13°
LMX6 RECTANGULAR	FA11108_LMX6-O-90	±18.5° x ±13°
LMX6 Oval	FA10698_LMX6-Rec	±20° x ±9.5°

© Ledil Oy – PRELIMINARY - Subject to change without prior notice

MEASUREMENT DATA



© Ledil Oy – PRELIMINARY - Subject to change without prior notice

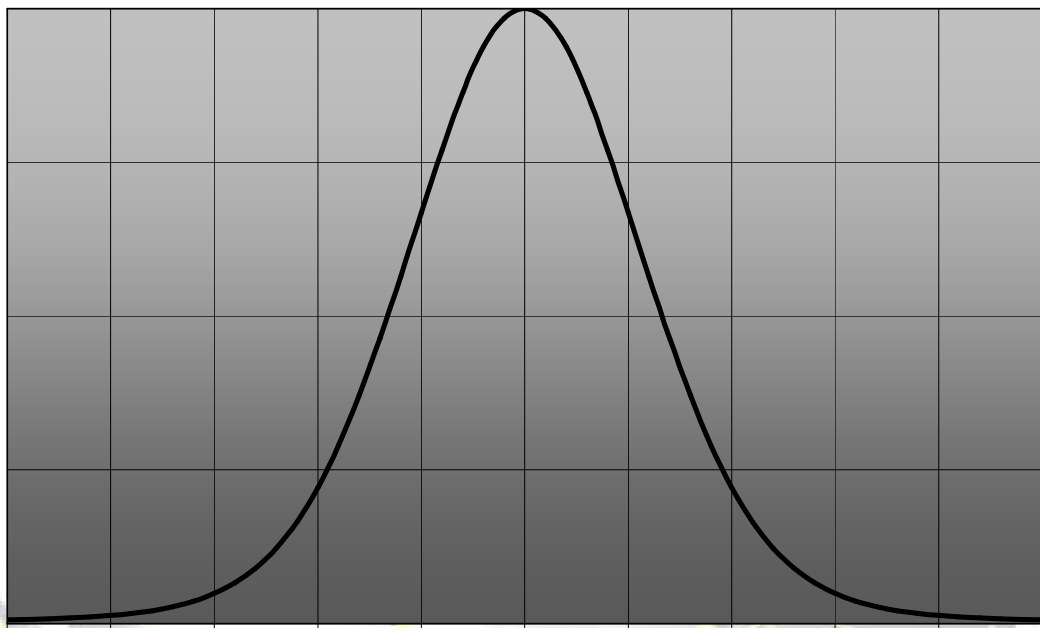


© Ledil Oy – PRELIMINARY - Subject to change without prior notice

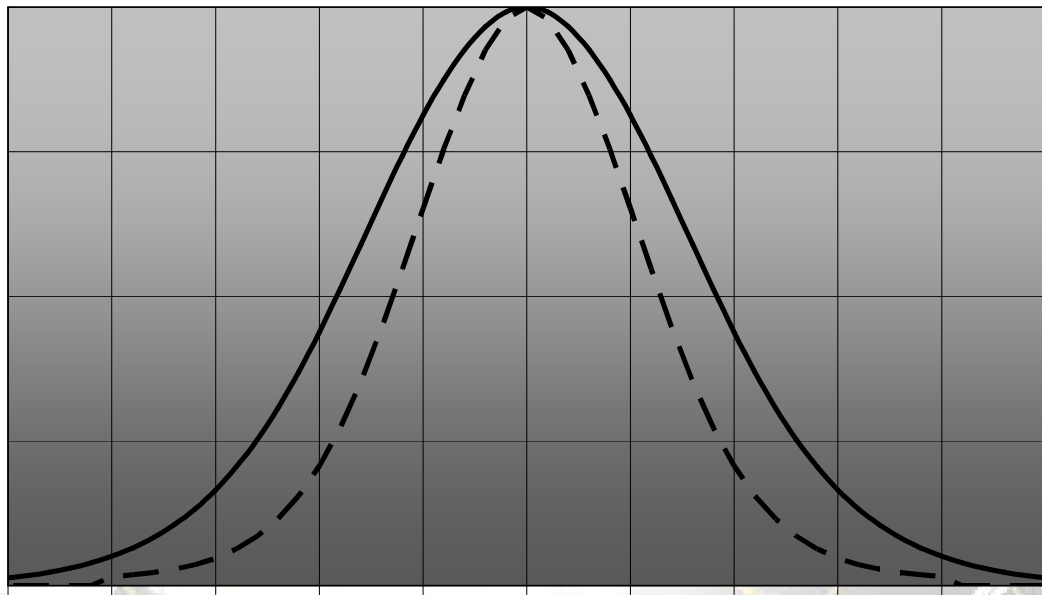
Ledil Oy
Tehdaskatu 13
FIN-24100 SALO, Finland

www.ledil.com
email: ledil@ledil.com
FAX: +358-2-733 8001

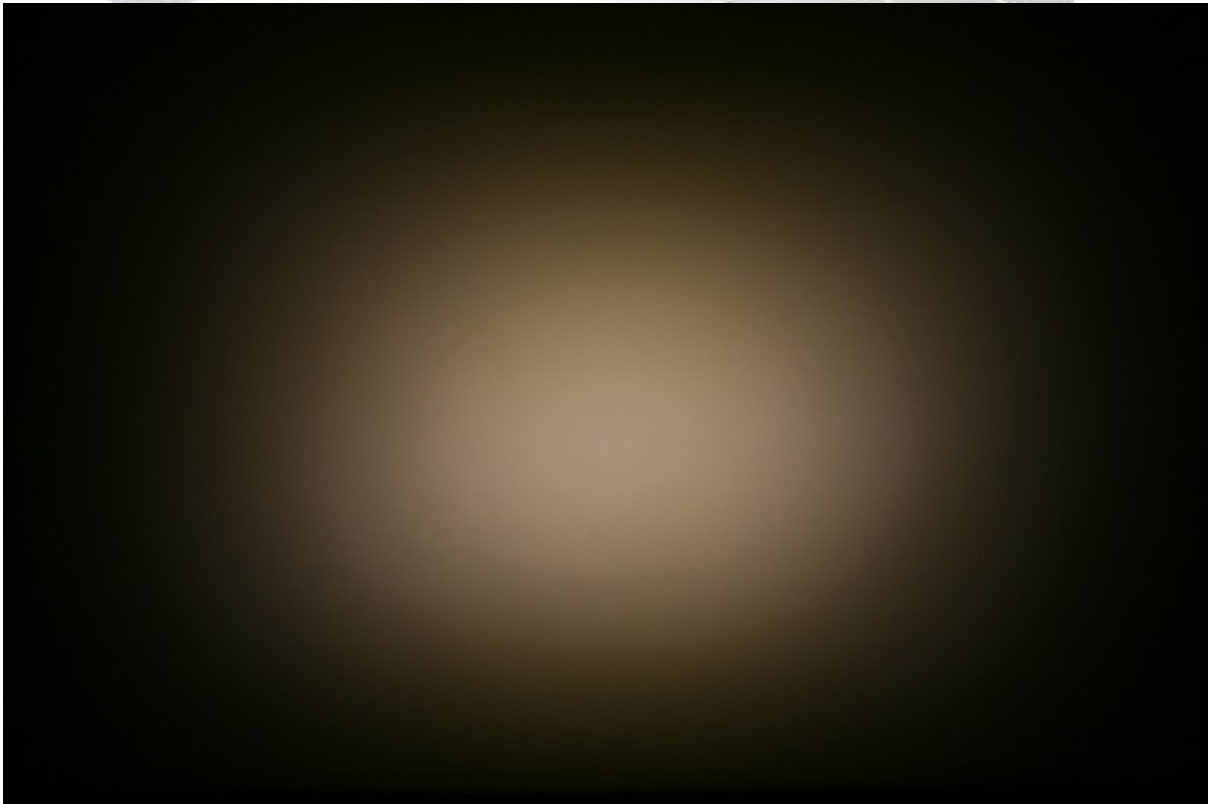
2009-11-29



© Ledil Oy – PRELIMINARY - Subject to change without prior notice



— Relative Intensity of FA10698_LMX6-Rec - - - Vertical

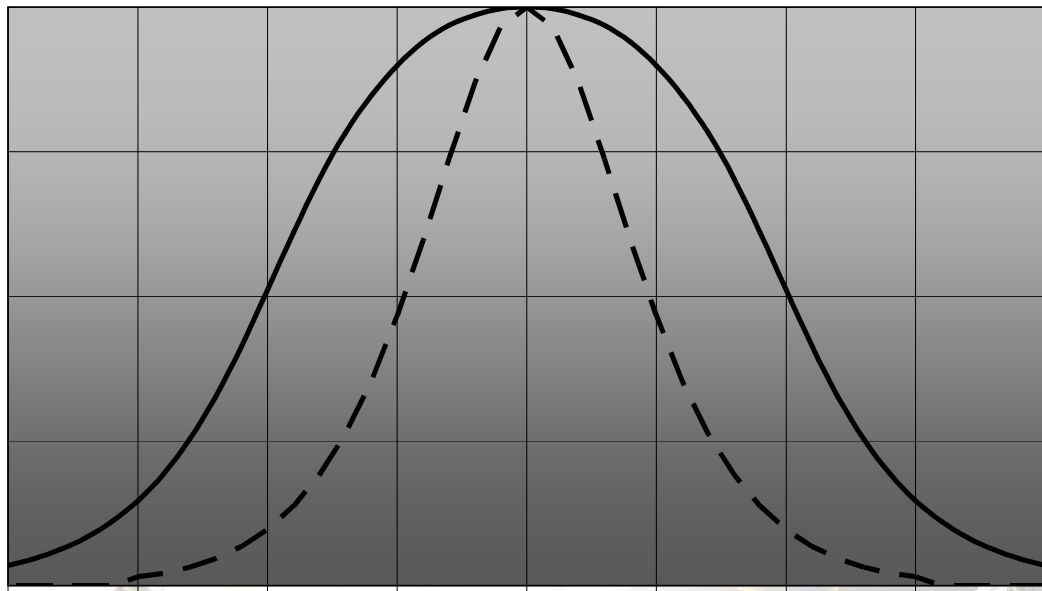


© Ledil Oy – PRELIMINARY - Subject to change without prior notice

Ledil Oy
Tehdaskatu 13
FIN-24100 SALO, Finland

www.ledil.com
email: ledil@ledil.com
FAX: +358-2-733 8001

2009-11-29



— Relative Intensity of FA11222_LMX6-O-90 — Vertical



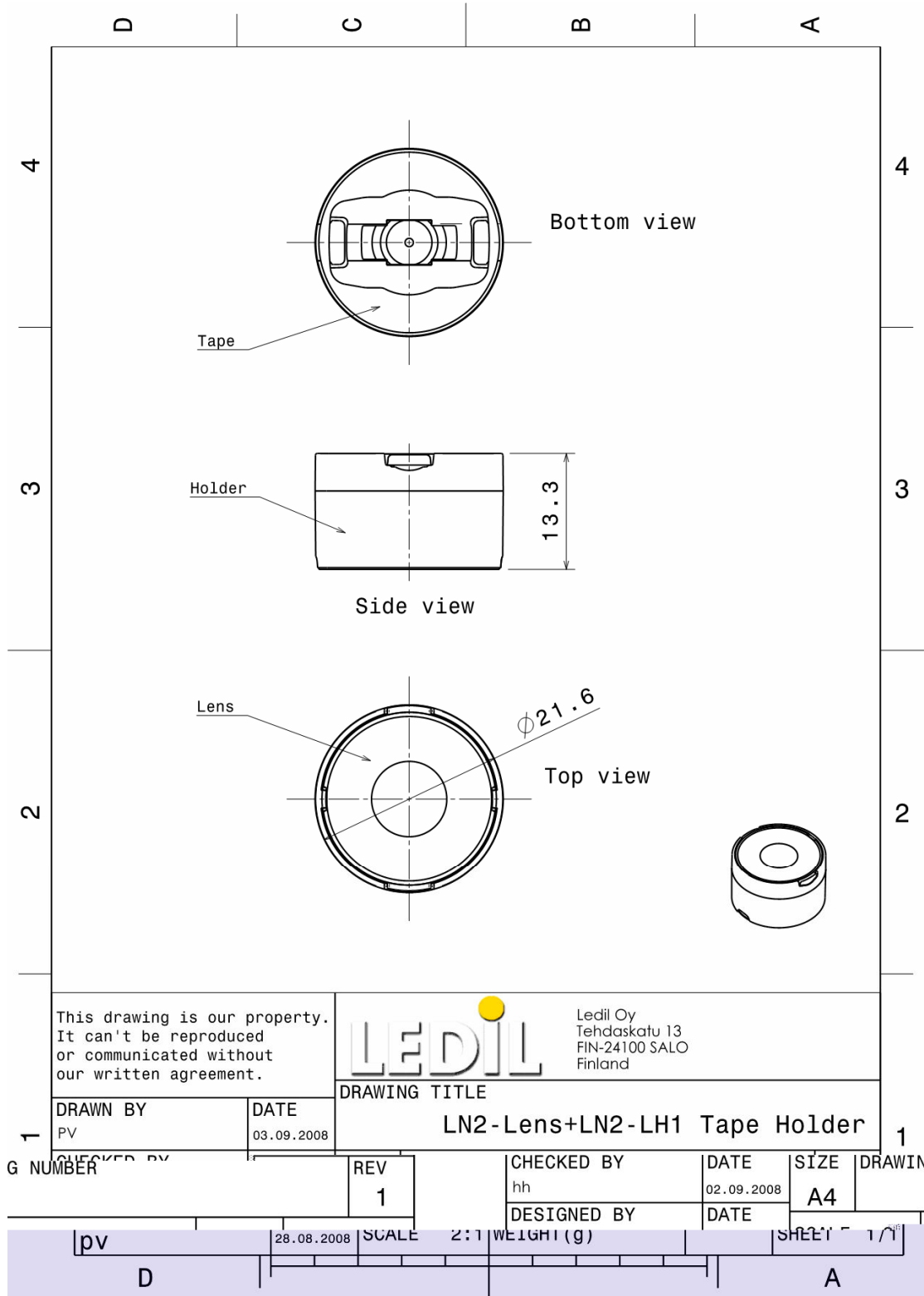
© Ledil Oy – PRELIMINARY - Subject to change without prior notice

Ledil Oy
Tehdaskatu 13
FIN-24100 SALO, Finland

www.ledil.com
email: ledil@ledil.com
FAX: +358-2-733 8001

2009-11-29

DRAWINGS



This drawing is our property.
It can't be reproduced
or communicated without
our written agreement.



Ledil Oy
Tehdaskatu 13
FIN-24100 SALO
Finland

DRAWING TITLE

LN2-Lens+LN2-LH1 Tape Holder

DRAWN BY

PV

DATE

03.09.2008

CHECKED BY
G NUMBER

REV

1

CHECKED BY

hh

DATE

02.09.2008

SIZE

A4

DRAWING

DESIGNED BY

DATE

SHEET 1/1

pv

28.08.2008

SCALE

2:1

WEIGHT (g)

D

A

© Ledil Oy - PRELIMINARY - Subject to change without prior notice