

FLARE-C lens for Cree XLamp XR, XR-C and XR-E



Flare-C

Flare-C-Diff

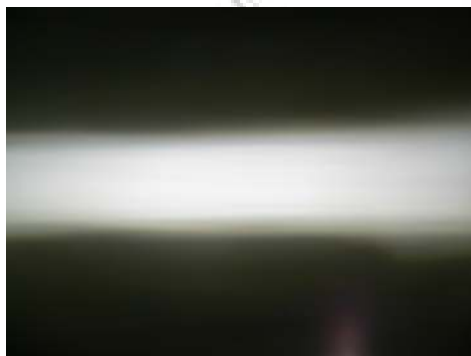


Flare-C-tape

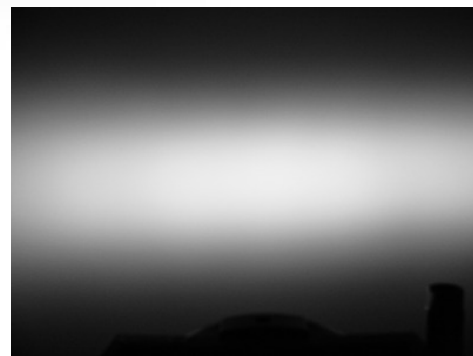


- Lens designed for Cree XLamp XR, XR-C and XR-E
- Lens material optical grade PMMA with high UV and temperature resistance (105°C/220°F). Allows use of high current and temperature conditions
- Best available optical efficiency
- Fastening to PCB & heat sink with 2 screws
- LED can be assembled parallel or perpendicular to the x,y axis (to turn the light distribution by 90°)
- Compact dimensions 23 x 25 mm. Square form enables easy build of a line without any gaps between lenses.
- **Especially suitable for Beacon and other 360° solutions and in linear solutions with high evenness requirements**

NAME	ORDERING CODE	FWHM Angle
Flare-C lens	C10402_Flare-C-lens	±4° x ±45°
Flare-C lens + tape	CA10563_Flare-C-tape	±4° x ±45°
Flare-C Diffuser	C10527_Flare-C-diff	±6° x ±42°



Flare-C Lens

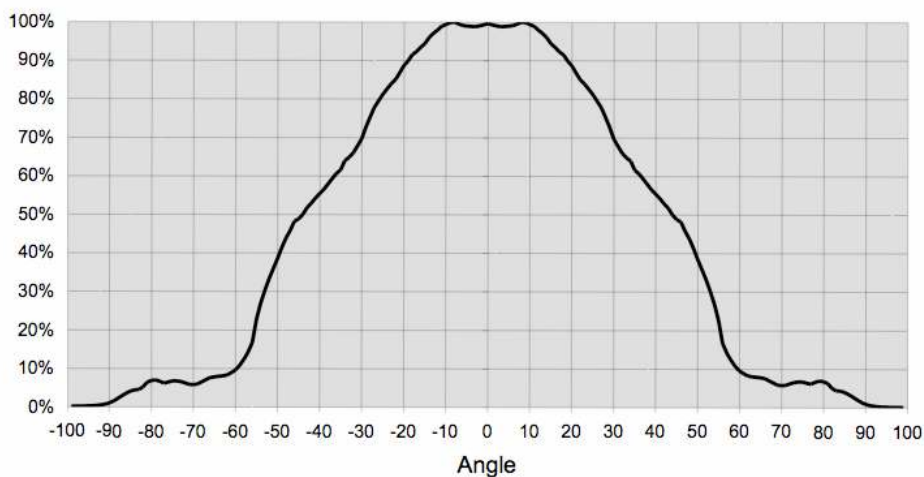


Flare-C-Diff

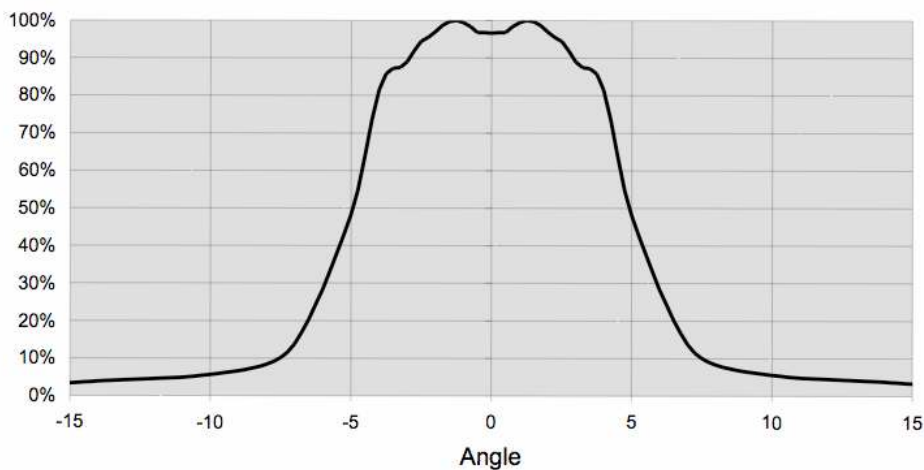
© Ledil Oy - Subject to change without prior notice

MEASUREMENTS

Relative horizontal intensity of FLARE-C

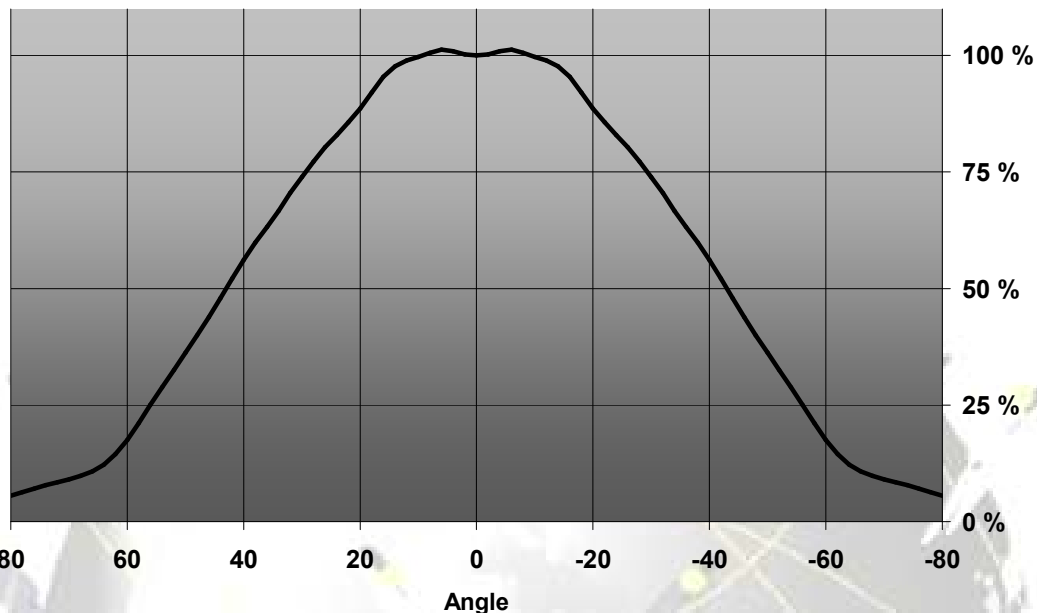


Relative vertical intensity of FLARE-C

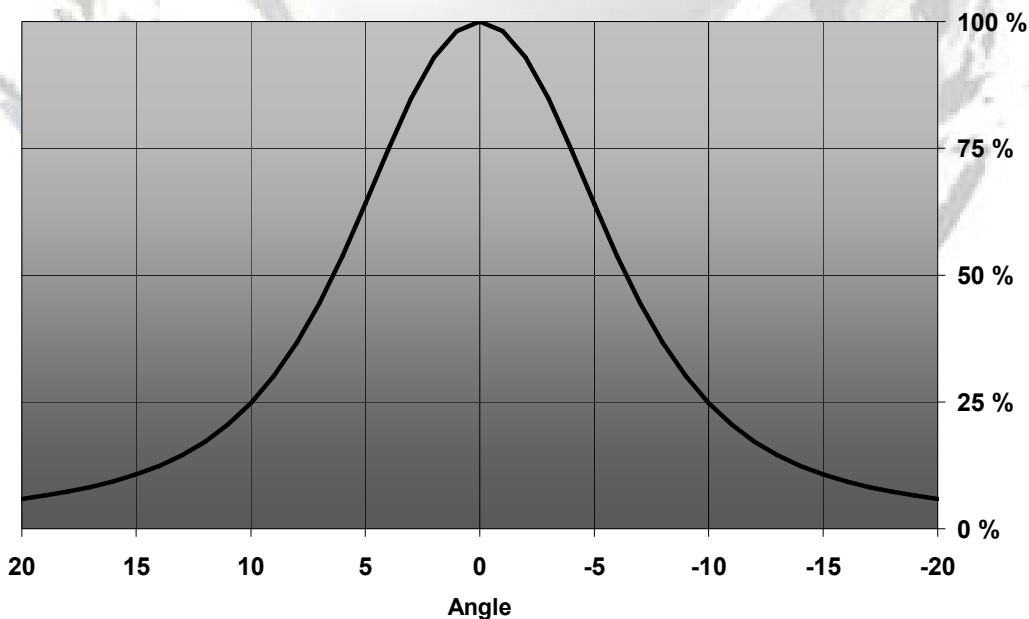


© Ledil Oy - Subject to change without prior notice

Relative Intensity of Flare-C-DIFF (horizontal)

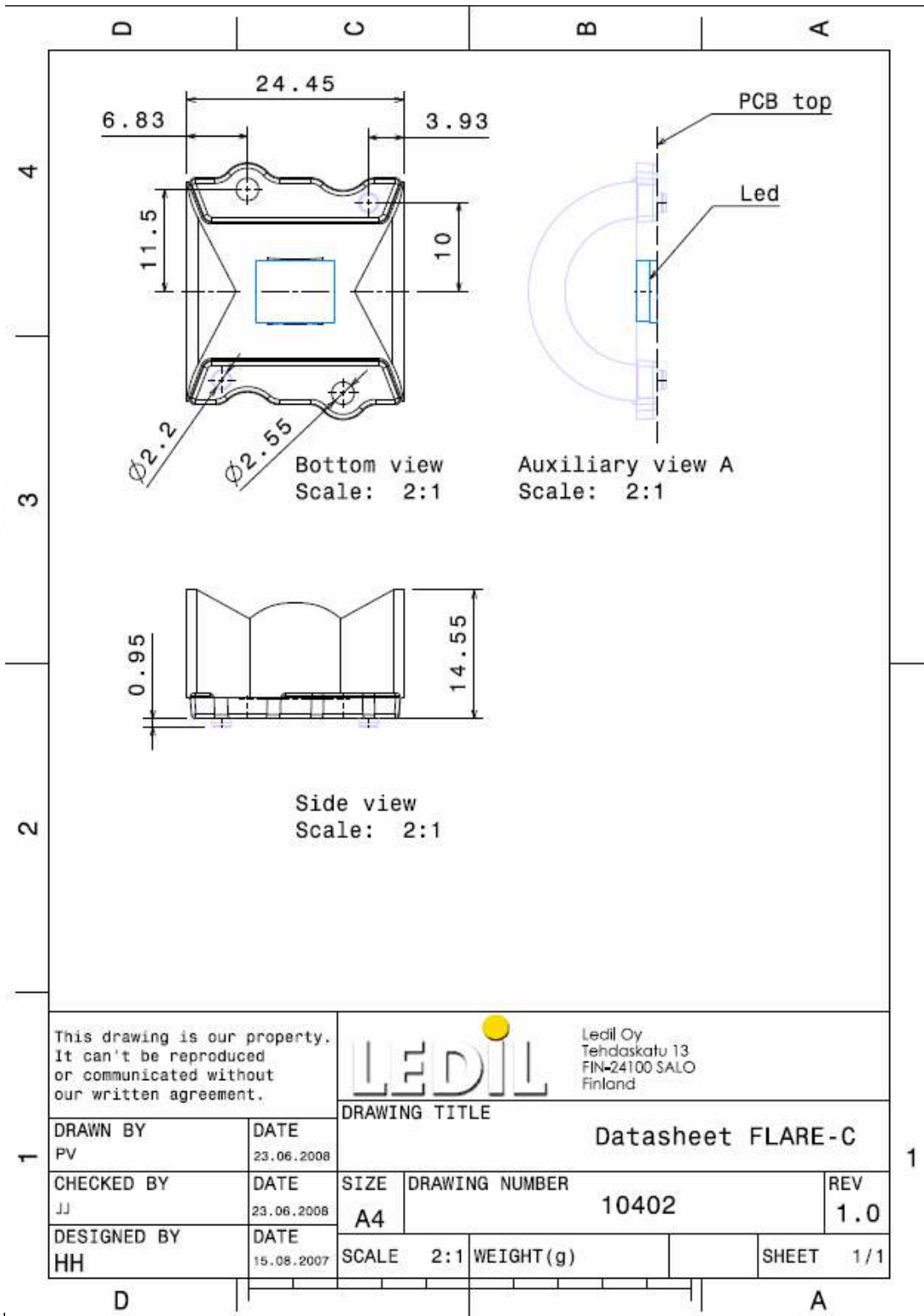


Relative Intensity of Flare-C-DIFF (vertical)



© Ledil Oy - Subject to change without prior notice

DRAWING



© Ledil Oy - Subject to change without prior notice