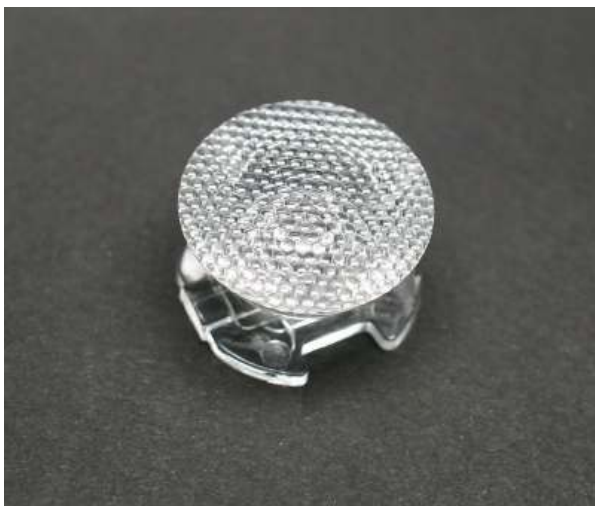


Fully sealable Emily lenses for Cree XP-G LEDs



- Specially designed for Cree XLAMP XP-G series of LEDs.
- Lens material optical grade PMMA with high UV and temperature resistance (105°C/220°F)
- High optical efficiency, up to 90%
- No lens holder. Lens has small position pins, fastening to heat sink with a PU foam adhesive tape of automotive grade. For mounting instruction, please see datasheet at the bottom page.
- Lens foot can be potted with resin without losses in optical efficiency (**fully sealed construction** of luminaire possible)
- Diameter 26 mm, height 15mm

LENS TYPES

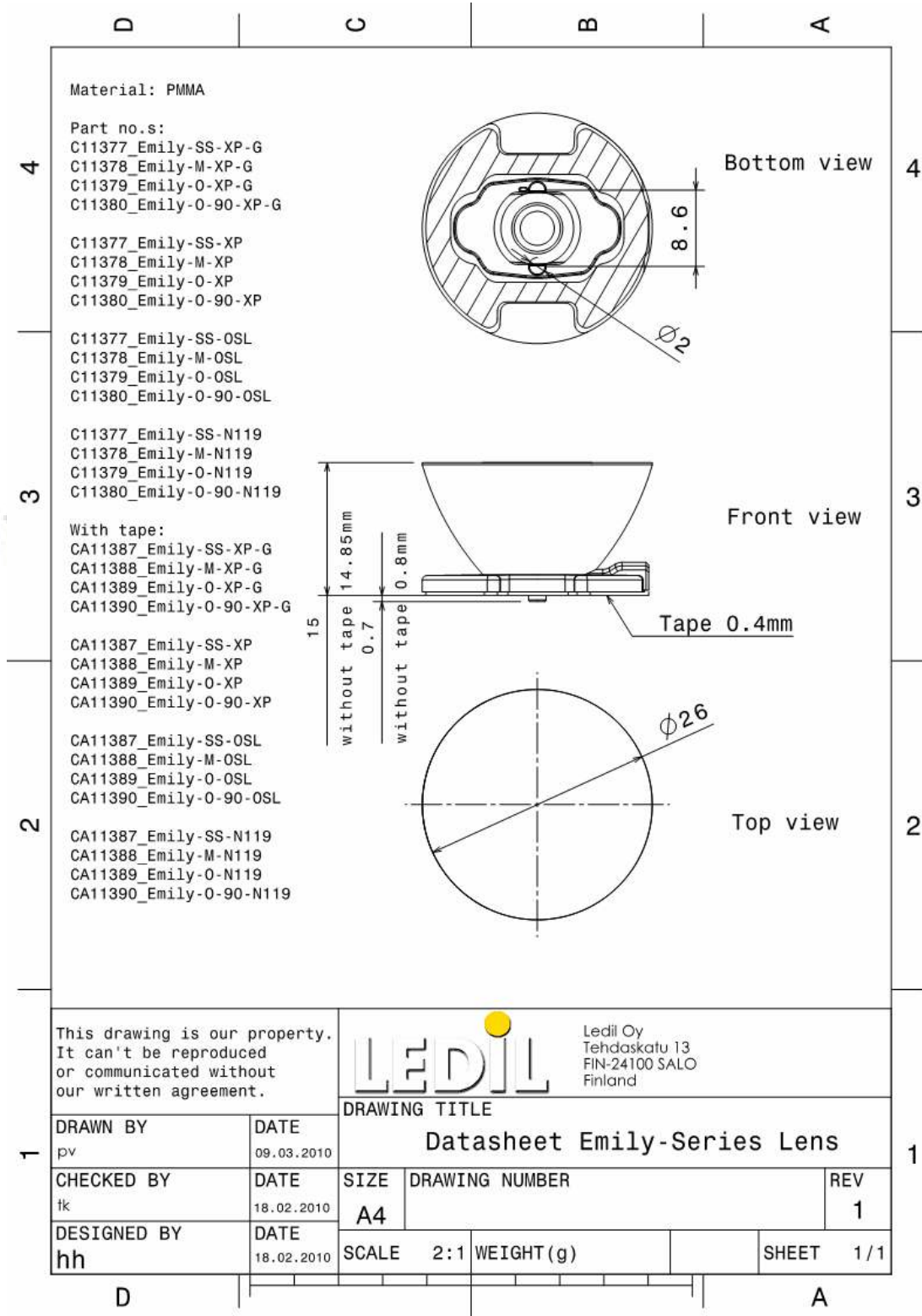
NAME	ORDERING CODE	FWHM Angle
Emily Smooth Spot	CA11387_Emily-SS-XP-G	Coming soon
Emily Medium	CA11388_Emily-M-XP-G	Coming soon
Emily Oval	CA11389_Emily-O-XP-G	Coming soon
Emily Oval 90°	CA11390_Emily-O-90-XP-G	Coming soon

MEASUREMENTS

Coming soon

© Ledil Oy – Subject to change without prior notice

DRAWINGS



This drawing is our property. It can't be reproduced or communicated without our written agreement.



Ledil Oy
 Tehdaskatu 13
 FIN-24100 SALO
 Finland

DRAWING TITLE

Datasheet Emily-Series Lens

DRAWN BY pv	DATE 09.03.2010
CHECKED BY tk	DATE 18.02.2010
DESIGNED BY hh	DATE 18.02.2010

SIZE A4	DRAWING NUMBER	REV 1
SCALE 2:1	WEIGHT (g)	SHEET 1/1