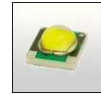


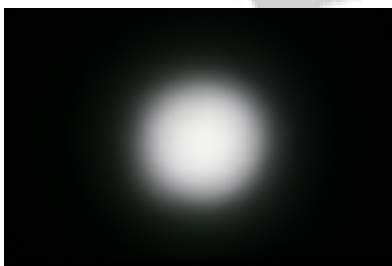
Cute-3-XP-G (MR11), lenses for CREE XP-G LEDs



- Specially designed for Cree XLAMP XP-G series of LEDs.
- Special care taken to make a uniform white or warm white illumination. Lenses work well with other colors, too.
- Lens material optical grade PMMA. Allows use of high current and temperature conditions (105°C/220°F)
- No lens holder. Fastening to heat sink with droplets of glue.
- Best available optical efficiency, up to 90%.

LENS TYPES

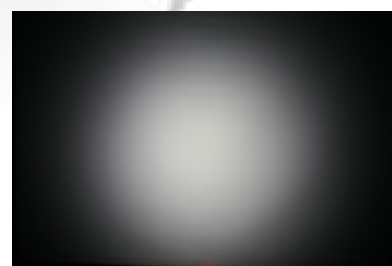
NAME	ORDERING CODE	FWHM Angle
Cute-3 Smooth Spot	C10754_Cute-3-SS-XP-G	±8°
Cute-3 Medium	C10755_Cute-3-M-XP-G	±12°
Cute-3 Wide	C10756_Cute-3-W-XP-G	±20°



C10754_Cute-3-SS-XP-G



C10755_Cute-3-M-XP-G

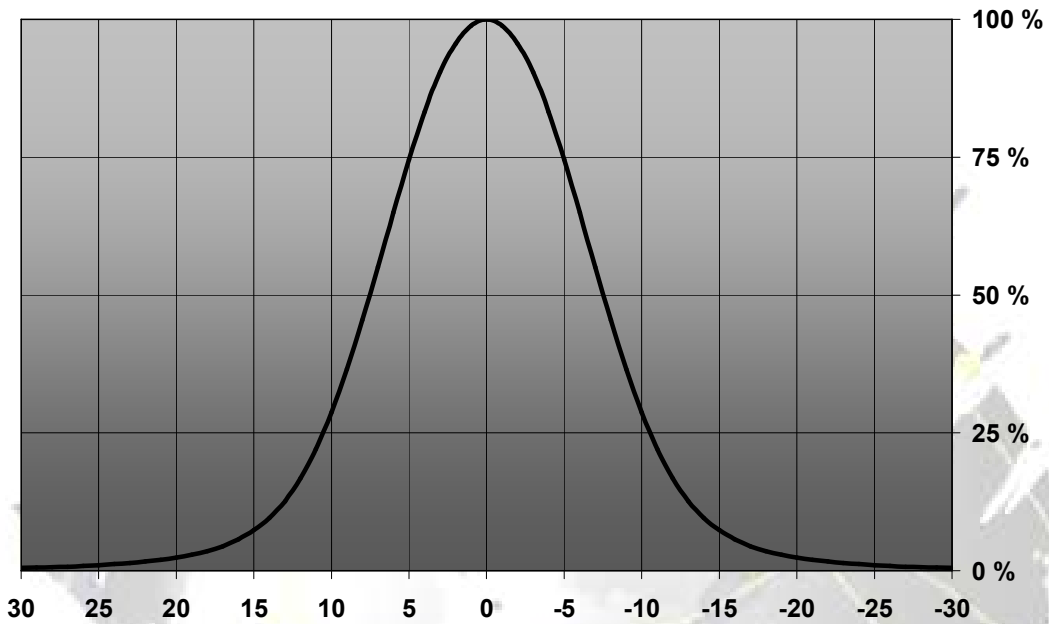


C10756_Cute-3-W-XP-G

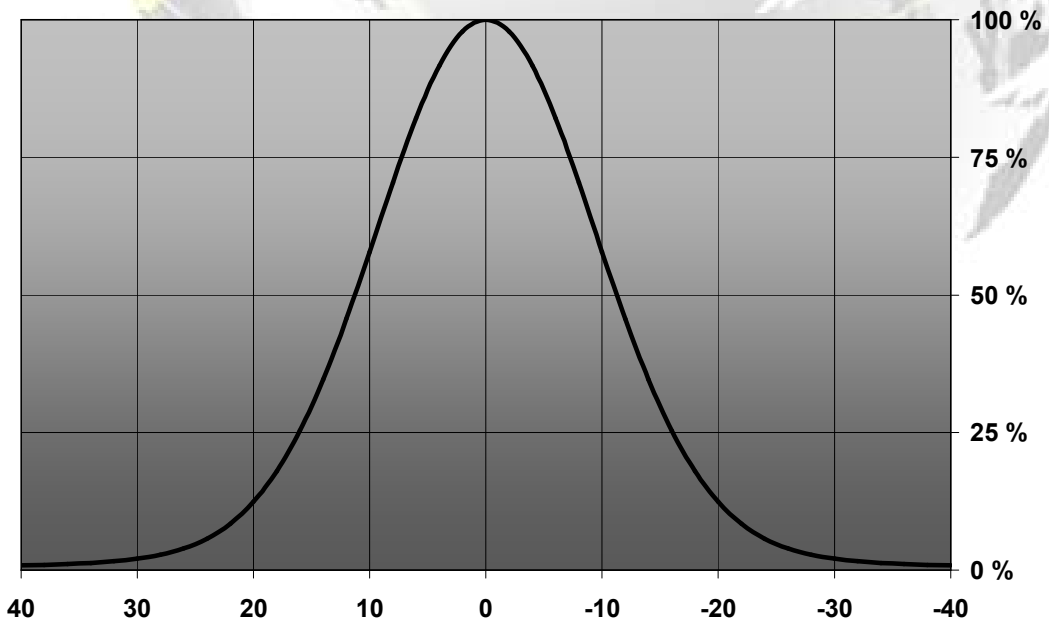
© Ledil Oy – PRELIMINARY - Subject to change without prior notice

MEASUREMENT DATA

Relative Intensity of C10754_Cute-3-SS-XP-G

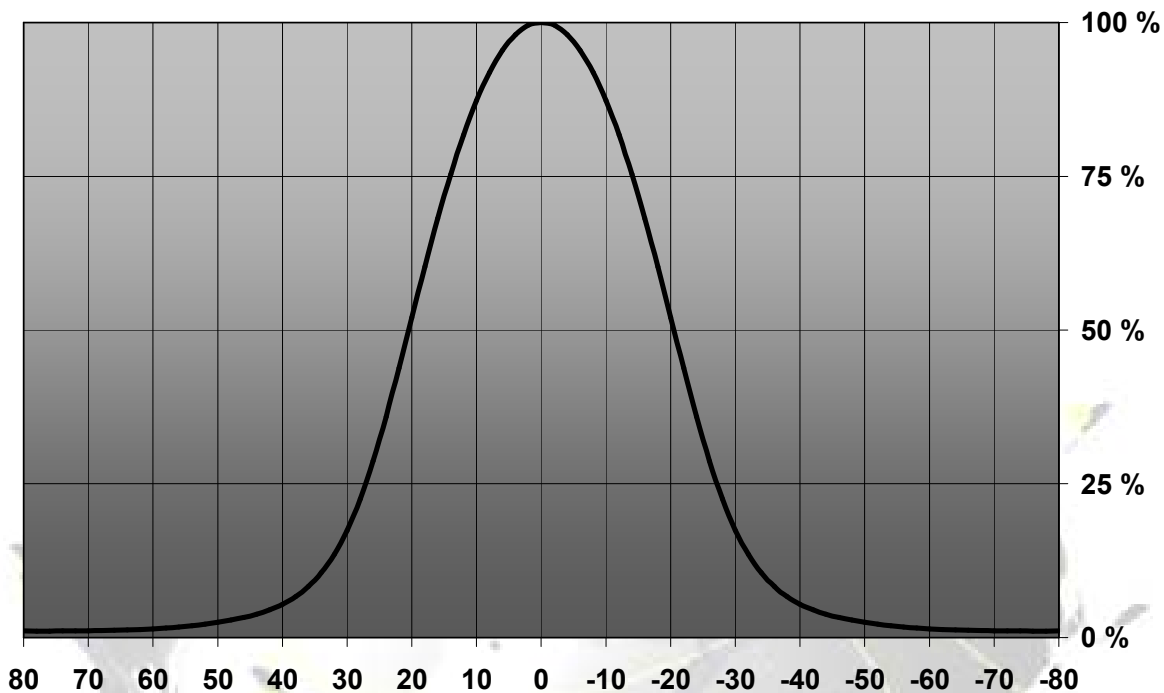


Relative Intensity of C10755_Cute-3-M-XP-G



© Ledil Oy – PRELIMINARY - Subject to change without prior notice

Relative Intensity of C10756_Cute-3-W-XP-G



EULUMDAT & IES FILES AVAILABLE BY REQUEST

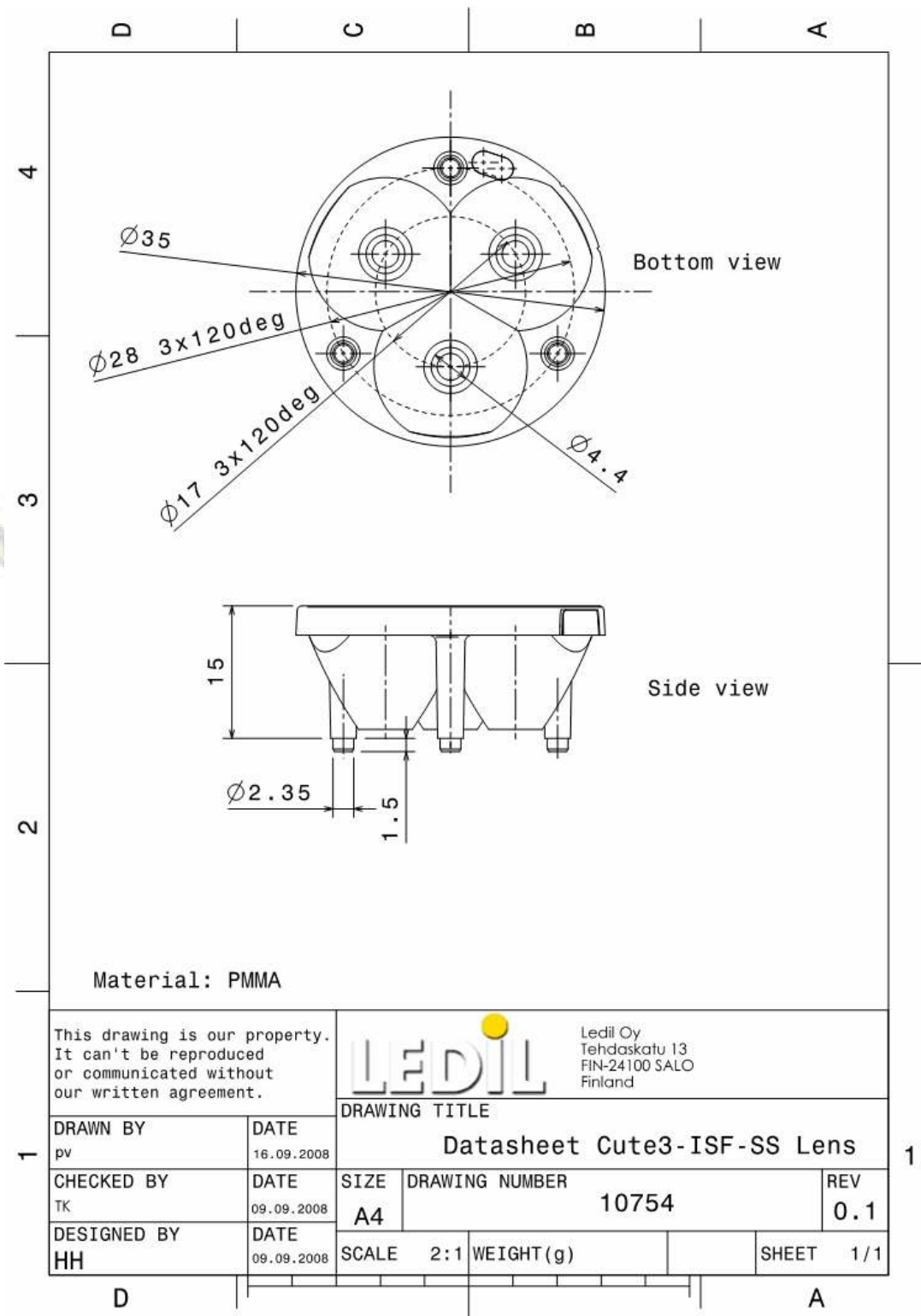
© Ledil Oy – PRELIMINARY - Subject to change without prior notice

Ledil Oy
 Tehdaskatu 13
 FIN-24100 SALO, Finland

www.ledil.com
 email: ledil@ledil.com
 FAX: +358-2-733 8001

2009-12-14

DRAWINGS



© Ledil Oy – PRELIMINARY - Subject to change without prior notice